

# ***U.S. SPECIAL PRINTING DUMMY TEST STAMPS***

**The word, Dummy Stamp or Test Stamp indicates what it implies, a process of printing as a sample of a final or intermediate stamp product.**

**The order of the album is by the company or organization producing the Dummy or Test Stamp product.**

**Some of the reasons for producing these items are:**

**A: Vending Machine Companies testing**

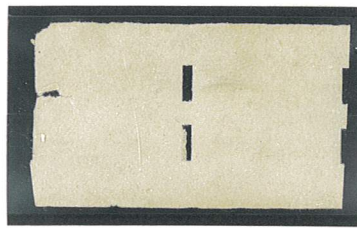
**B: Affixing Machine Companies testing**

**C: Governmental and Private Organization testing**

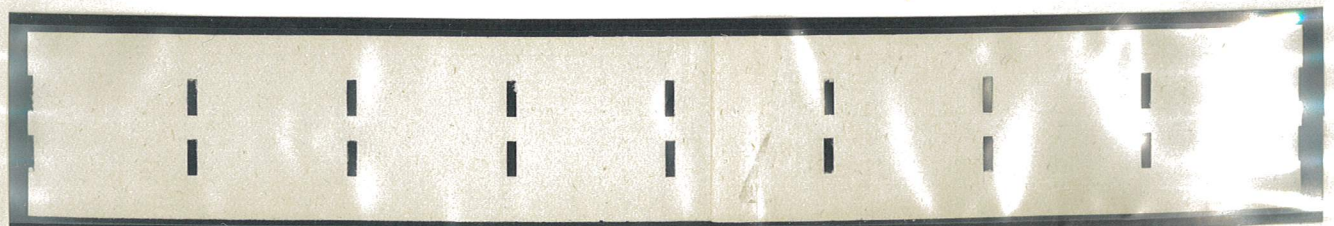
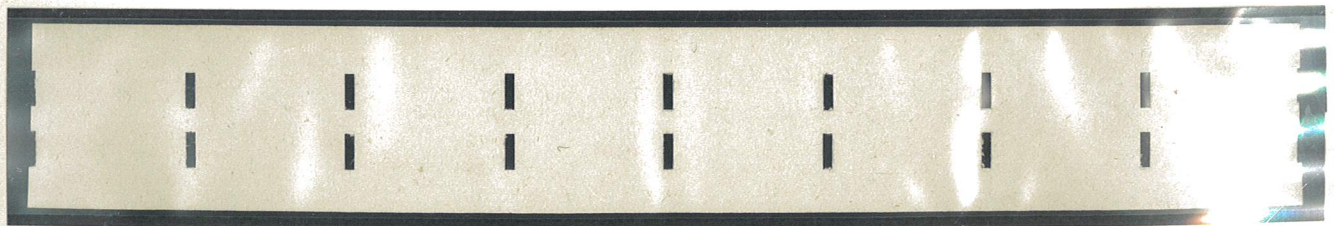
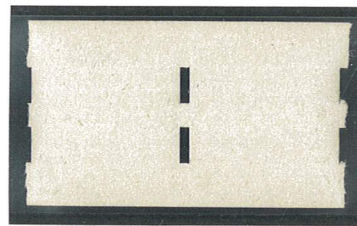
# ***U.S.SPECIAL PRINTING DUMMY TEST STAMPS***

**Schermack Stamp Vending and Affixing Company**

*Schermack Type III Perforations*



Might Be End Starter



Pasteup Strip

# ***U.S. SPECIAL PRINTING DUMMY TEST STAMPS***

**Schermack Stamp Vending and Affixing Company**

*Schermack Type III Perforations*

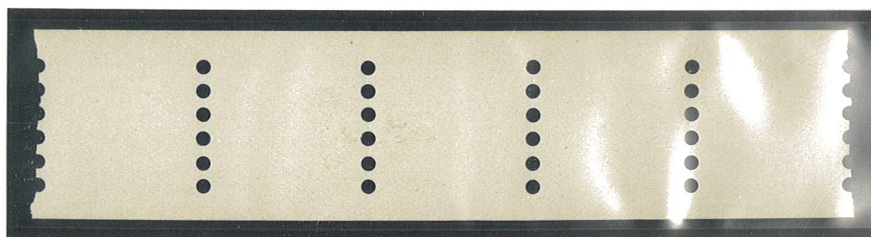
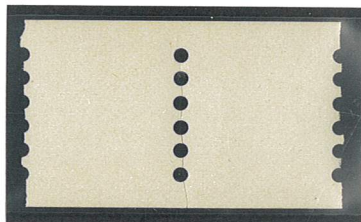




# ***U.S.SPECIAL PRINTING DUMMY TEST STAMPS***

**Mail-O-Meter Company**

*Mail-O-Meter Type I Perforations*



*Mail-O-Meter Type Ia Perforations*

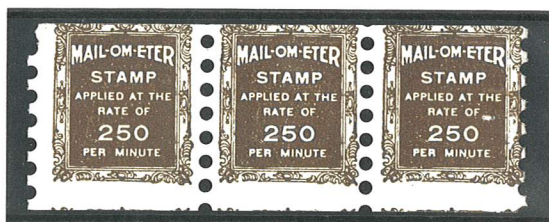




# ***U.S. SPECIAL PRINTING DUMMY TEST STAMPS***

**Mail-O-Meter Company**

*Mail-O-Meter Type II Perforations*



*Perforations 10½*



*Perforations 10½*



# ***U.S. SPECIAL PRINTING DUMMY TEST STAMPS***

**Mail-O-Meter Company**

*Schermack Type III Perforations*



Pasteup Strip



Guideline Strip

# ***U.S. SPECIAL PRINTING DUMMY TEST STAMPS***

**Mail-O-Meter Company**

*Schermack Type III Perforations*



Unused Exhibit Envelope with Dummy Stamp



# ***U.S. SPECIAL PRINTING DUMMY TEST STAMPS***

**United States Automatic Vending Company**



# U.S. SPECIAL PRINTING DUMMY TEST STAMPS

Bureau of Engraving and Printing  
Offset Printing

Hamilton Head

Perforation  $10\frac{1}{2}$



Hamilton Head Offset Pair on part of a cover to  
Company owner, E.W. Werden,  
E.W. Werden, related to Sara  
Coe, another owner of the Company.

# ***U.S. SPECIAL PRINTING DUMMY TEST STAMPS***

**Bureau of Engraving and Printing  
Rotary Press Development**

*Imperforated*

*Numerals and Alexander Hamilton*



Margin Block

*Perforation 12*



Strip



# U.S. SPECIAL PRINTING DUMMY TEST STAMPS

Bureau of Engraving and Printing  
Offset Printing

*Imperforated*

*Minerva Facing Right*

*Design 30½x34 mm*



*Minerva Facing Left*

*Design 30x33½ mm*





# U.S. SPECIAL PRINTING DUMMY TEST STAMPS

Multipost Co

*Perforation 10¼*



*Perforation 10¼*



*Perforation 10½*



# U.S.SPECIAL PRINTING DUMMY TEST STAMPS

Simplex Mfg Co

*Imperforated*





# ***U.S. SPECIAL PRINTING DUMMY TEST STAMPS***

**Standard Stamp Affixer Co**

*Perforations 10½*

**Boston, Mass**



Color  
Variety

**Everett, Mass**



**Somerville, Mass**

*Perforations Alternating 8¼ and 8½*





# U.S. SPECIAL PRINTING DUMMY TEST STAMPS

Standard Stamp Affixer Co

Somerville, Mass

*Perforations 8½*



*Trunks for  
Kendall Machine*



Commercial Travellers' Boston Benefit Association

316 JOHN HANCOCK BUILDING

178 DEVONSHIRE STREET

P. O. BOX 5169

BOSTON, MASS.



# ***U.S. SPECIAL PRINTING DUMMY TEST STAMPS***

**Standard Stamp Affixer Co**

**Somerville, Mass**

*Perforations 10½*



*Perforations Alternating 10.2 and 10.9*





# U. S. SPECIAL PRINTING DUMMY TEST STAMPS

The Extensive Manufacturing Co

*Perforations 8½*



*Perforations 10½*



*Perforations 10 ¾*



# ***U.S. SPECIAL PRINTING DUMMY TEST STAMPS***

**Standard Mailing Machine Co**

*Perforations 10½*

**Everett, Mass**

**Shade Varities**





# ***U.S. SPECIAL PRINTING DUMMY TEST STAMPS***

**New Jersey Vending Machine Co**

*Perforation 10½*



# ***U.S.SPECIAL PRINTING DUMMY TEST STAMPS***

**Wizard Stamp Affixer**

*Perforations 10¼*





# ***U.S. SPECIAL PRINTING DUMMY TEST STAMPS***

**National Envelope Sealing and Stamp Manufacturing Co**

**Boston, Mass**

*Perforations 8½*



Shade  
Variety

# ***U.S. SPECIAL PRINTING DUMMY TEST STAMPS***

**Postage Stamp Machine Co**

*Perforations 8½*





# ***U.S.SPECIAL PRINTING DUMMY TEST STAMPS***

## **Kendall Stamp Affixer**

*Perforations Alternating 10.4 and 10.6*



# ***U.S. SPECIAL PRINTING DUMMY TEST STAMPS***

**Security**

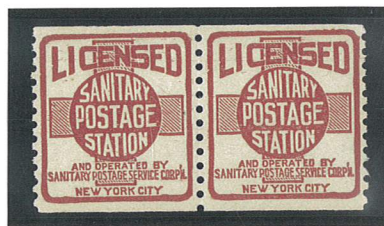
*Perforations 8½*





# ***U.S. SPECIAL PRINTING DUMMY TEST STAMPS***

**Licensed Sanitary Postage**



# ***U.S. SPECIAL PRINTING DUMMY TEST STAMPS***

**Vidaver Mailing Machine Co Inc**

*Perforations 10½*



# ***U.S. SPECIAL PRINTING DUMMY TEST STAMPS***

**Molyneux Automatic Mailing Machine**

*Perforations 11 3/4 x 12*





# ***U.S. SPECIAL PRINTING DUMMY TEST STAMPS***

**Puritan Mailing Machine Co**

*Perforations 8½*



# ***U.S.SPECIAL PRINTING DUMMY TEST STAMPS***

**The Postamper Co**

*Perforations 10½*



# ***U.S. SPECIAL PRINTING DUMMY TEST STAMPS***

**Natural Method Stamp Affixer**

*Perforations 11 3/4*





# ***U.S.SPECIAL PRINTING DUMMY TEST STAMPS***

**Bruckmann A. G. of Germany**

*Imperforated*



Pair With Leader Edge

# ***U.S. SPECIAL PRINTING DUMMY TEST STAMPS***

**Burt and Tobey**

