

SAVINGS STAMPS

THIS ALBUM CONTAINS:

S 1 THRU S 7

**THE COMPLETE SAVINGS STAMP COLLECTION IS IN THE
FOLLOWING ALBUMS:**

- 1. SAVINGS STAMPS S 1 - 7**
- 2. SAVINGS BOOKLETS**
- 3. MISCELLANEOUS ALBUM.**

**THE MISCELLANEOUS ALBUM CONTAINS THE FOLLOWING
SHEET.**

S 7 SHEET OF 100,LL POSITION, P# 167476

**THE HORIZONTAL PERFORATIONS OF THIS SHEET
ARE JUST ABOVE THE 25 CENT VALUE FIGURE**

SAVINGS STAMPS

1954 - 57 ISSUE

This issue is listed as above in Scotts, however the last item of the issue was the S-7 which had a release date of sometime in 1961, with the first notation in the Bureau Specialist in May 1980. In fact this whole issue seem to be surrounded by "secrecy or unwillingness to announce the issue".

George B. Sloan in his column in Stamps May 26, 1956 wrote "The new redrawn design pictures the same Minute Manand looks the same as the 1942 issue....but the right panel reads "Savings Stamp" in place of "War Savings".-he continues- I will write Washington as to what denominations are in the issue and when first distributed, ...and I will report". This comment 1-1/2 years after Scotts lists as the first issue date of November 30, 1954. In August 1956 the Bureau Specialist did have more information on the issue, however this report confirmed only the 10 & 25 cent sheet stamp and the same in booklet form. On this and the following page are shown the stamps in the series with the dates of issue when know. The booklet stamps are contained in a separate album



S-1 11/30/1954



S-2 12/30/1954



S-3 12/31/1956

SAVINGS STAMPS

1954 - 57 ISSUE



S-4 3/13/1957



S-5 11/30/1956



S-6 11/18/1958



S-7 1961

SAVINGS STAMPS

TYPE S-1

PLATE NO. 164991



Upper Left



Upper Right



Lower Left



Lower Right

SAVINGS STAMPS

TYPE S-1

PLATE NO. 164992



Upper Left



Upper Right



Lower Left



Lower Right

SAVINGS STAMPS

TYPE S-1

PLATE NO. 165917



Upper Left



Upper Right



Lower Left



Lower Right

SAVINGS STAMPS

TYPE S-1

PLATE NO. 165918



Upper Left



Upper Right



Lower Left



Lower Right

SAVINGS STAMPS

TYPE S-1

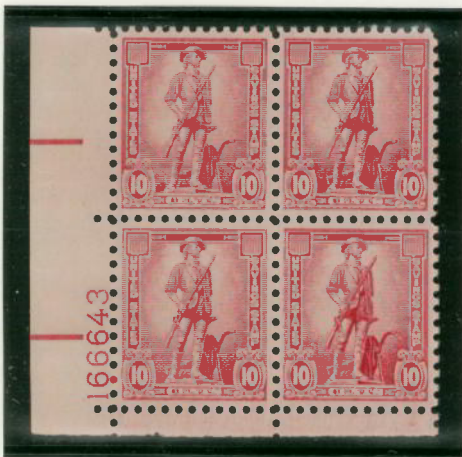
PLATE NO. 166643



Upper Left



Upper Right



Lower Left



Lower Right

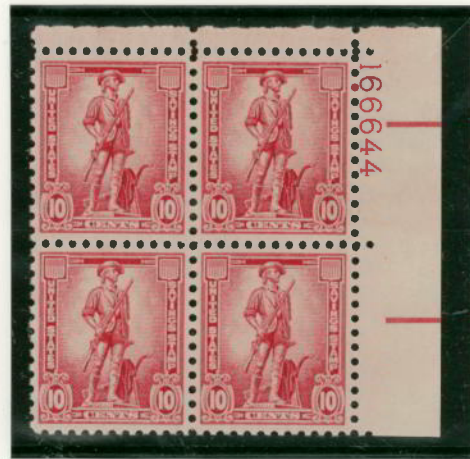
SAVINGS STAMPS

TYPE S-1

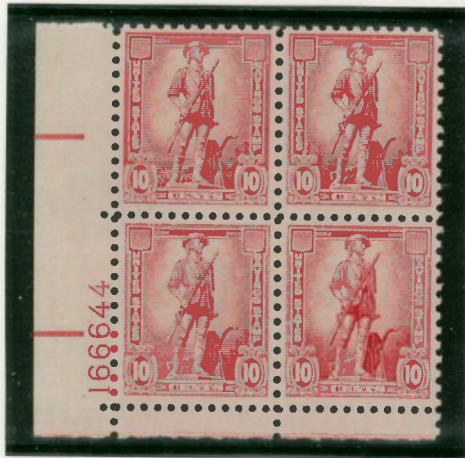
PLATE NO. 166644



Upper Left



Upper Right



Lower Left



Lower Right

SAVINGS STAMPS

TYPE S-1

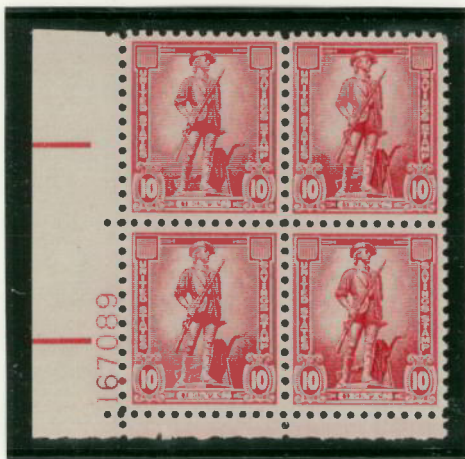
PLATE NO. 167089



Upper Left



Upper Right



Lower Left



Lower Right

SAVINGS STAMPS

TYPE S-1

PLATE NO. 167090



Upper Left



Upper Right



Lower Left



Lower Right

SAVINGS STAMPS

TYPE S-1

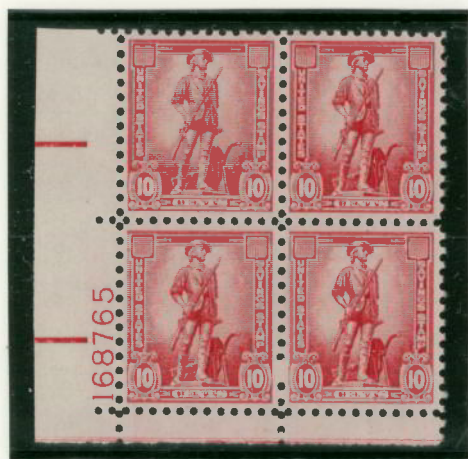
PLATE NO. 168765



Upper Left



Upper Right



Lower Left



Lower Right

SAVINGS STAMPS

TYPE S-1

PLATE NO. 168766



Upper Left



Upper Right



Lower Left



Lower Right

SAVINGS STAMPS

TYPE S-2

PLATE NO. 165007



Upper Left



Upper Right



Lower Left



Lower Right

SAVINGS STAMPS

TYPE S-2

PLATE NO. 165008



Upper Left



Upper Right



Lower Left

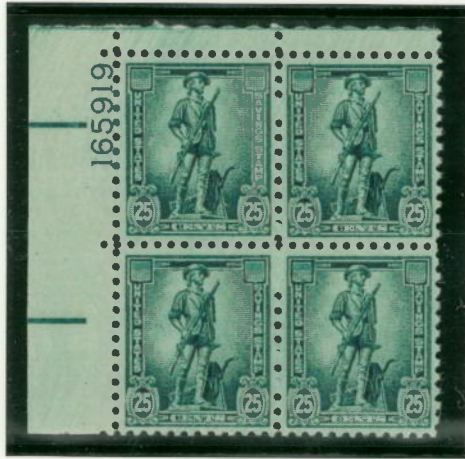


Lower Right

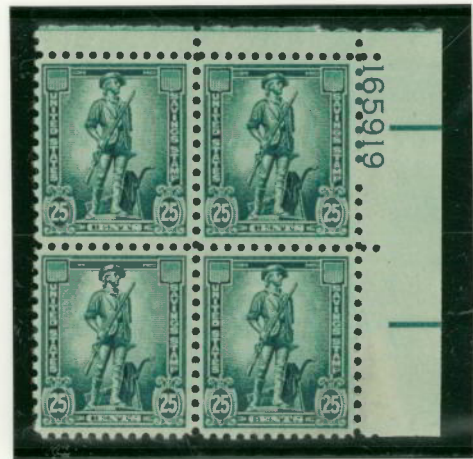
SAVINGS STAMPS

TYPE S-2

PLATE NO. 165919



Upper Left



Upper Right



Lower Left



Lower Right

SAVINGS STAMPS

TYPE S-2

PLATE NO. 165920



Upper Left



Upper Right



Lower Left



Lower Right

SAVINGS STAMPS

TYPE S-3

PLATE NO. 165050



Upper Left



Upper Right



Lower Left



Lower Right

SAVINGS STAMPS

TYPE S-3

PLATE NO. 165051



Upper Left



Upper Right



Lower Left



Lower Right

SAVINGS STAMPS

TYPE S-3

PLATE NO. 166741



Upper Left



Upper Right



Lower Left



Lower Right

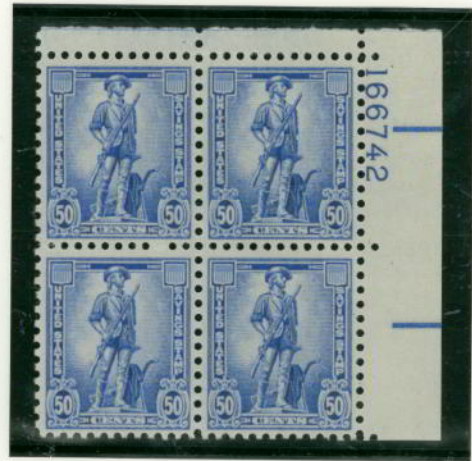
SAVINGS STAMPS

TYPE S-3

PLATE NO. 166742



Upper Left



Upper Right



Lower Left



Lower Right

SAVINGS STAMPS

TYPE S-3

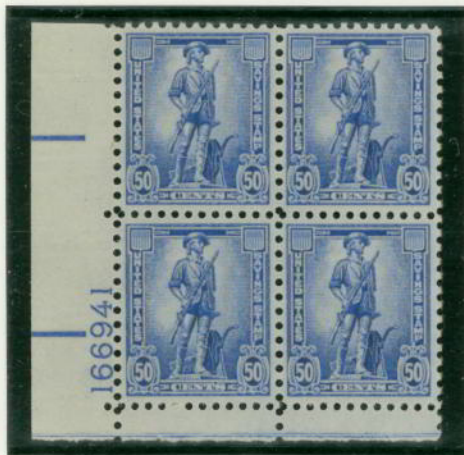
PLATE NO. 166941



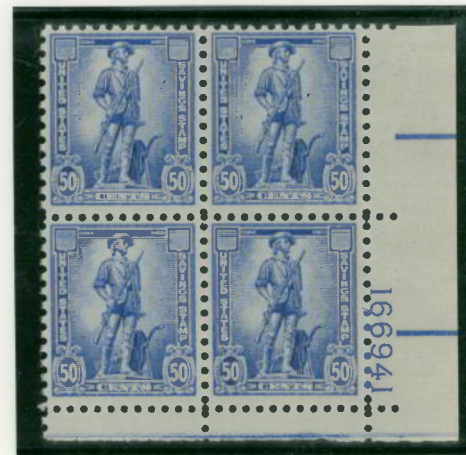
Upper Left



Upper Right



Lower Left

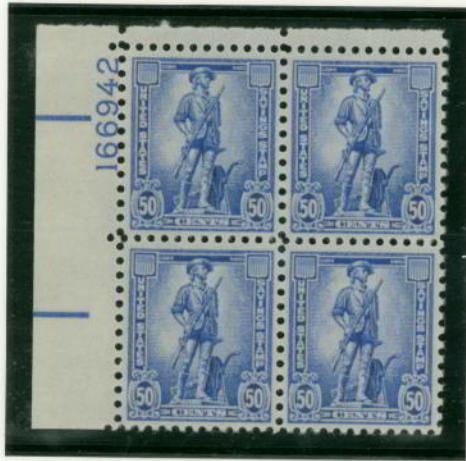


Lower Right

SAVINGS STAMPS

TYPE S-3

PLATE NO. 166942



Upper Left



Upper Right



Lower Left



Lower Right

SAVINGS STAMPS

TYPE S-4

PLATE NO. 166097



Upper Left



Upper Right



Lower Left



Lower Right

SAVINGS STAMPS

TYPE S-4

PLATE NO. 166098



Upper Left



Upper Right



Lower Left



Lower Right

SAVINGS STAMPS

TYPE S-4

PLATE NO. 166683



Upper Left



Upper Right



Lower Left



Lower Right

SAVINGS STAMPS

TYPE S-4

PLATE NO. 166684



Upper Left



Upper Right



Lower Left



Lower Right

SAVINGS STAMPS

TYPE S-5

PLATE NO. 166068 - TOP

The \$5 Savings Stamp was printed in sheets of 100, consisting of 4 panes or 25 each, only one plate was prepared, and thus only one plate number is known. There were 2 plate numbers at the top, and two plate numbers on the bottom, one for each quadrant of the plate. The top and bottom positions, for the left and right panes may be determined only if there is remaining sheet margin on the left or right, or ideally a plate block of 8 or 10 as shown on the following pages.



SAVINGS STAMPS

TYPE S-5

PLATE NO. 166068 - TOP LEFT



SAVINGS STAMPS

TYPE S-5

PLATE NO. 166068 - TOP RIGHT



SAVINGS STAMPS

TYPE S-5

PLATE NO. 166068 - BOTTOM LEFT



SAVINGS STAMPS

TYPE S-5

PLATE NO. 166068 - BOTTOM RIGHT



SAVINGS STAMPS

TYPE S-5

A DOUBLE ERROR ?



These strips of the S-5 Savings stamps seem to be a "double error". The first error seems to be that the stamps are not aligned with the edges of the paper sheet on which they are printed. This would indicate that the sheet was misfed to the press. The second error is that the perforations are not in proper alignment with the stamp image itself. After printing the sheet edge is the reference for proper perforating. By comparing the vertical perforations on the strip of 3 with those of one of the bottom plate blocks of 8 it is seen that the perforations in the strip are in their normal spacing from the edge of the sheet.

Thus a single error, a misfed sheet and the stamps were not printed properly positioned for perforation that followed



SAVINGS STAMPS

TYPE S-6

PLATE NO. 166921



Upper Left



Upper Right



Lower Left



Lower Right

SAVINGS STAMPS

TYPE S-6

PLATE NO. 166925



Upper Left



Upper Right



Lower Left



Lower Right

SAVINGS STAMPS

TYPE S-6

PLATE NO. 166946



Upper Left



Upper Right



Lower Left



Lower Right

SAVINGS STAMPS

TYPE S-7

PLATE NO. 167473



Upper Left



Upper Right



Lower Left



Lower Right

SAVINGS STAMPS

TYPE S-7

PLATE NO. 167476



Upper Left



Upper Right



Lower Left



Lower Right

SAVINGS STAMPS

TYPE S-7

PLATE NO. 167486



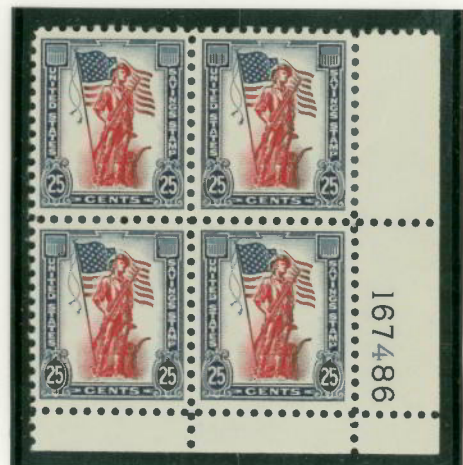
Upper Left



Upper Right



Lower Left



Lower Right

SAVINGS STAMPS

TYPE S-7

PLATE NO. 167489



Upper Left



Upper Right



Lower Left



Lower Right

SAVINGS STAMPS

TYPE S-7

PLATE NO. 169089



Upper Left



Upper Right



Lower Left



Lower Right

SAVINGS STAMPS

TYPE S7

PLATE NO. 167486

LETTER - OPPOSITE PAGE

