

ESSAY

1-2-3-5-

All the same

make shield on each side
broader and finish each
and of panel.



Approved
A. D. Payne
Apr 27 1884

J4-51 VAR



J33E-A



J31-E1



J31-E2



J33-E1



J33-E2



J33-E3

Essays



Cut Small



Grey Black



Dull Red



Dull Brown



Dull Blue



Essays
Dia on white ivory, due sort



Black Brown



Scarlet



Blue

signed DMS



Scarlet



Blue

Essex

cut small



Grey Black



Dull Red



dull dk

Essays
Die on white ivory paper



Black



Black Brown



Scarlet



SCARLET - Signed



Black-Signed



Signed-Blue

Essays

Cut Small



Grey Black



Dull Red



Dull Brown



Dull Blue

Essays
Die on white ivory paper



Black



Blue



scarlet



Black-Signed



Blue-Signed

Essays

C.10



James Dunn L.S. Rinaldon

Black

C.10



James Dunn L.S. Rinaldon

Black Brown

C.23



James Dunn L.S. Rinaldon

Black

C.25



James Dunn L.S. Rinaldon

Black Brown

C 10 A



C 10 A



C 10 A



C 10 A



C 10 A



C 10 A





CARD

C23A



C23A



C23A



C23A



C23A



C23A



C23A



C23A



C23A



C23A



C23A



C23A



C23A



C.24A



C.24A



C.24A



C.24A



C.24A



C.24A



C 24A



C 24A



C 24A



C 24A



C 24A



C 24A



C 25 A



C 25 A



C 25 A



C 25 A



C 25 A



C 25 A



















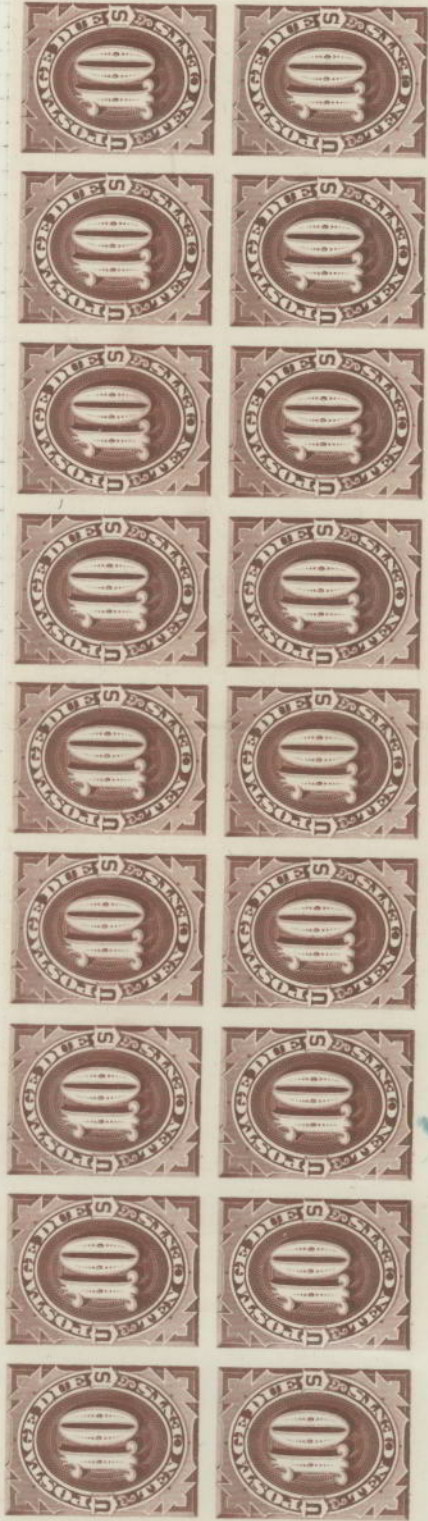












No. 331

AMERICAN BANK NOTE COMPANY.

Sept 16th / 79.

Sept 16th / 79

J.S. 73 Proof on India



















C.10.A



C.23.A



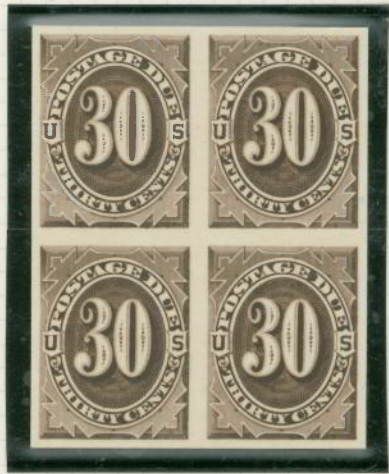
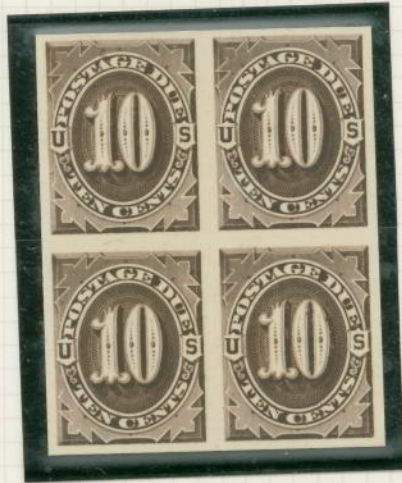
C.24.A



C.25.A







C10A



James D. Dunning

C25A.



James D. ...

C 24A



James Dunn





James Dunn





J22-874 Plate Proof of Card



J1-7 P2



J22/8 P(4)



Ex. G. Arthur

India Paper



Card



J-373 Plate Proof - India



Dark Brown

Dark Brown

Dark Brown

J1-J7 74 Plate-Proof-Card



Ex G. Arden

J1P4-7P4

Card



J15P4-2LP4

Card





UNITED STATES

Stamps received without Specimen overprint by the U.P.U.H.Q. in Bern, Switzerland
and forwarded thus by them to the Natal G.P.O. which handstamped them with the
Natal type NA 2 (Marcus Samuel) as found on the Natal King Edward VII £20.

The stamps were then arranged in an old Schraubeck album

1887-89

POSTAGE DUE

S.G. D221-D227

J 15 - J.21.

No. 21530

B. P. A. Expertising Limited
London-England
EXPERT COMMITTEE

9 MAR 1981

The Committee is of the opinion that the

UNITED STATES OF AMERICA 1887-89. Set of
7 values 1-50 cents red brown Postage
Due on two pieces handstamped 'SPECIMEN'
Samuel Type NA2 by National Post Office
on receipt from USA SG D 221-227
are genuine.

[Signature]
[Signature]

Neither the Company nor the members of the Expert Committee can accept
any liability, either collective or individual, for any opinion expressed



J1-~~01~~ 745 Dept. Specimen in blue KMM



THE PHILATELIC FOUNDATION

21 EAST 40TH STREET
NEW YORK, N.Y. 10016

EXPERT COMMITTEE

No. 0165901
2/28/90

We have examined the enclosed item, of which a photograph is attached, and described by the applicant as follows:

Country: UNITED STATES OF AMERICA

Cat. No.	Issue	Denom.	Color
J1P4S	1879	1¢	brown

Scott's unless otherwise specified.

UNUSED
CARD PROOF WITH SPECIMEN HANDSTAMP IN BLUE
AND WE ARE OF THE OPINION THAT:

IT IS GENUINE* * * * *



A 75447

Robert S. Clavelly
For The Expert Committee
ACTING Chairman

Submitted by LEWIS KAUFMAN



J1-7 P4 Plate Proof - Cowl

Opt. Specimen in Blue 10 1/2 mm

one of two sets believed to exist



P22-28P3 Proof India





AMERICAN BANK NOTE COMPANY.





THE PHILATELIC FOUNDATION

21 EAST 40TH STREET
NEW YORK, N.Y. 10016

EXPERT COMMITTEE

No. 0232237

10/26/90

We have examined the enclosed item, of which a photograph is attached, and described by the applicant as follows:

Country: UNITED STATES OF AMERICA

Cat. No.	Issue	Denom.	Color
J31a	1894	1¢	deep claret

Scott's unless otherwise specified.

UNUSED, NO GUM
IMPERFORATE HORIZONTAL PAIR

AND WE ARE OF THE OPINION THAT:

IT IS GENUINE WITH SLIGHT CREASES IN THE LEFT
STAMP * * * * *



Rosen
For The Expert Committee
ACTING Chairman

A 087674

Rosevelt Proofs





1879

1891



1894



Atlanta Plate Proofs



Atlanta Plate Proofs



Atlanta Plate Proofs

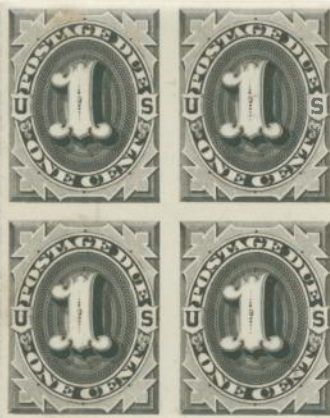
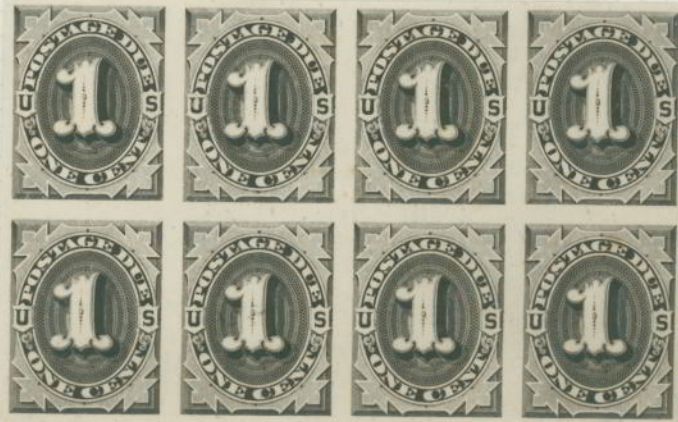


Atlanta Plate Proofs



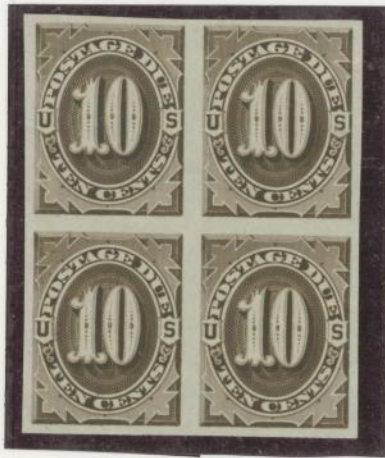
Atlanta Plate Proofs





POSTAGE DUE

1122
P&S - 207
- 27



**10¢ Dark Brown, Plate proof on India #J5P3.
Block of Four, Very Fine.....\$ 75.00**



The Philatelic Foundation

70 West 40th Street • 15th Floor
New York, NY 10018

EXPERT COMMITTEE

No. 0417966

1/18/05

We have examined the enclosed item, of which a photograph is attached, and *described by the applicant* as follows:

Country: UNITED STATES OF AMERICA

Cat. No.	Issue	Denom.	Color
J75P	1930	30¢	deep carmine

Scott's unless otherwise specified.

PROOF ON CARD.

AND WE ARE OF THE OPINION THAT:

IT IS NOT A SCOTT J75 LARGE DIE PROOF, BUT OTHERWISE DECLINE OPINION ON ITS STATUS. * * * *



Alan
For The Expert Committee
Chairman

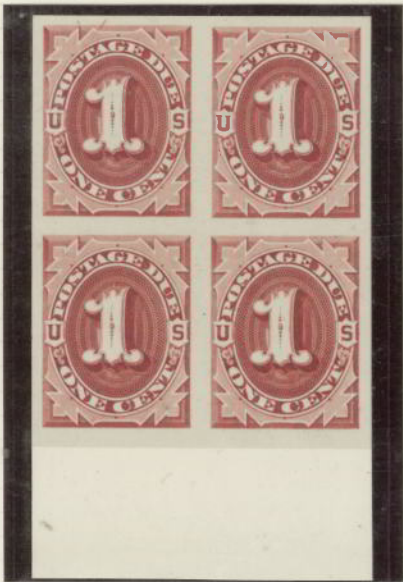
E 115917

Photocopies of this Certificate are not valid.

Submitted by JOHN W. LARSON



J22P3-J28P3



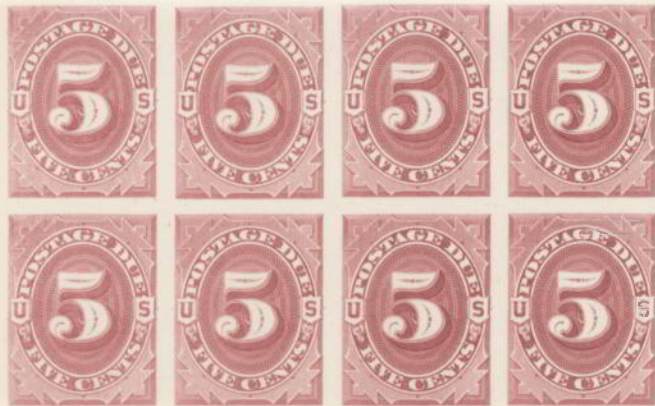
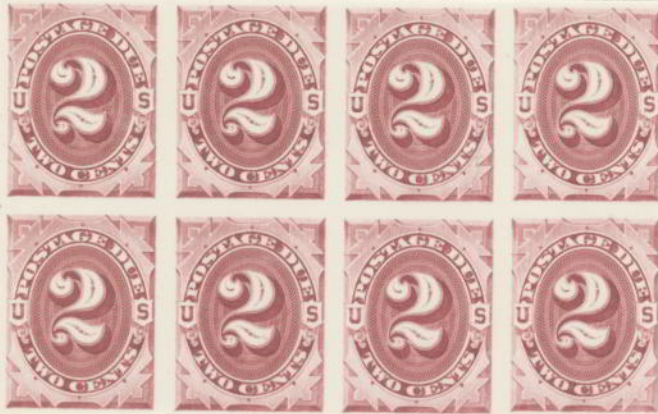
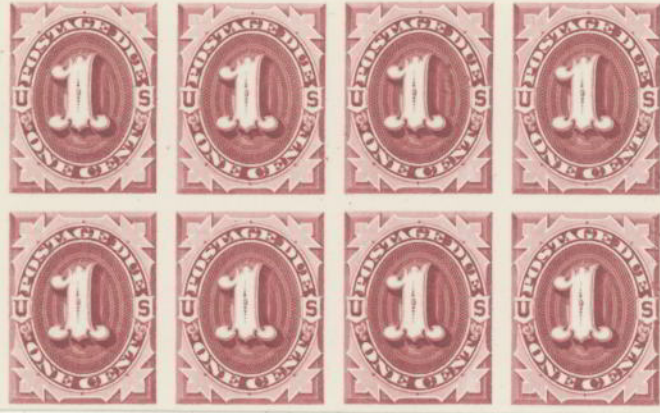
J1-TP-73



J1-TP-74



TZEP-28P Plate Proof on Card







J31-7P P2
on card



J32P-P4



J32 on India



J31P4a



1 of 3 KNOWN - Ex ROOSEVELT



Approved
Walter F. Brown
Postmaster General

1917 Essay Unissued

















J31-7 var
VERY small







Copy 801











ESSAY

1-2-3-5-

All the same,

make shield on each side
broader and finish each
and of panel.



Approved
A. D. Payne
Apr 27 1884

J4-51 VAR



J33E-A



J31-E1



J31-E2



J33-E1



J33-E2



J33-E3

Essays



Cut Small



Grey Black



Dull Red



Dull Brown



Dull Blue



Essays
Dia on white ivory, due sort



Black Brown



scarlet



Blue

signed DMS



scarlet



Blue

Essex

cut small



Grey Black



Dull Red



dull dk

Essays
Die on white ivory paper



Black



Black Brown



Scarlet



SCARLET - Signed



Black - Signed



Signed - Blue

Essays

Cut Small



Grey Black



Dull Red



Dull Brown



Dull Blue

Essays
Die on white ivory paper



Black



Blue



scarlet



Black-Signed



Blue-Signed

Essays

C.10



James Dunn L.S. Rinaldon

Black

C.10



James Dunn L.S. Rinaldon

Black Brown

C.23



James Dunn L.S. Rinaldon

Black

C.25



James Dunn L.S. Rinaldon

Black Brown

C 10 A



C 10 A



C 10 A



C 10 A



C 10 A



C 10 A





CARD

C23A



C23A



C23A



C23A



C23A



C23A



C23A



C23A



C23A



C23A



C23A



C23A



C23A



C.24A



C.24A



C.24A



C.24A



C.24A



C.24A



C 24A



C 24A



C 24A



C 24A



C 24A



C 24A



C 25 A



C 25 A



C 25 A



C 25 A



C 25 A



C 25 A



















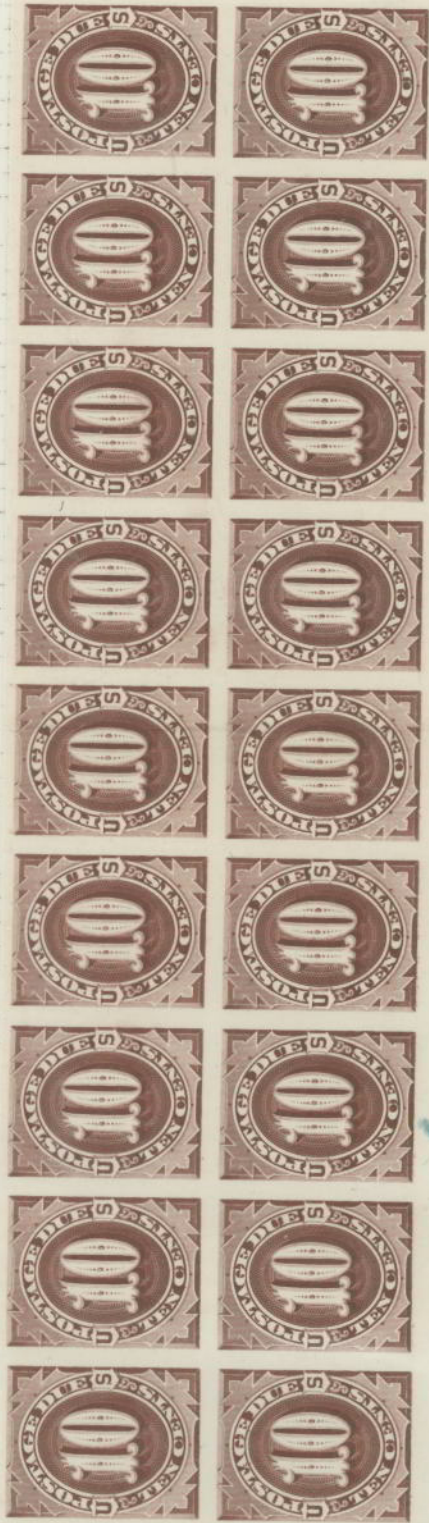












No. 331

AMERICAN BANK NOTE COMPANY.

Sept 16th / 79.

Sept 16th / 79

J.S. 73 Proof on India



















C.10.A



C.23.A



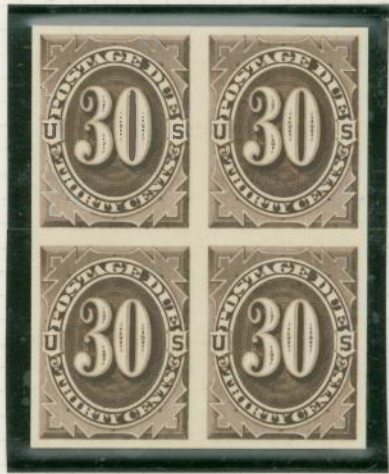
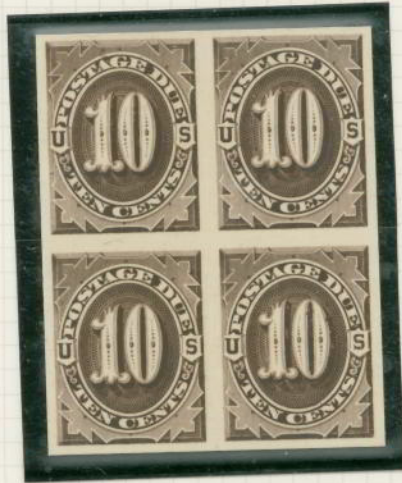
C.24.A



C.25.A







C10A



James D. ...

C25A.



James D. ...

C 24A



James Dunn





James Dunn





J22-874 Plate Proof of Card

