



## CANAL ZONE POSTAL STATIONERY 1907-1924

The exhibit is a study of all Canal Zone postal cards, stamped envelopes, and registration envelopes overprinted and surcharged on the postal stationery of the Republic of Panama.

When overprinted U.S. stamps appeared in 1904. Panamanians objected and a major confrontation occurred. President Theodore Roosevelt sent his Secretary of War, William Howard Taft, to resolve the issue, which resulted in the Taft Agreement.

It provided that Panama supply all the stamps and stationery to the Zone. The Canal Zone Postal Service was to pay Panama 40% of the face value of stamps and stationery, even though Panama had nothing to do with the transit of mail. The agreement was abrogated by President Calvin Coolidge effective June 30, 1924.

Canal Zone postal cards were first issued in 1907. Postal envelopes did not appear until 1916. Although registration envelopes were never used in the continental U.S., Canal Zone authorities decided to order a limited quantity in 1918.

All Panama overprinted stationery was replaced with U.S. stationery July 1, 1924. However "Canal Zone" overprinted on Panama stationery was valid until August 31, 1924 and later extended indefinitely on postal stationery imprinted by the purchaser.

The exhibit includes Panama stationery which was overprinted and Canal Zone covers, mint entires, die and color varieties, printing errors, and unusual usages. Most of the post offices that operated in the Canal Zone from 1907-1924 are represented including the very rare Monte Lirio and Toro Point offices. Postage rates existing in the 1907-1924 timeframe are part of th exhibit. All known stationery specimens from the American Bank Note Company archives are included. The registration envelopes issues, including the rare rejected issue, arre complete.

Other highlights of the exhibit are the complete postal stationery production files of the one-cent Balboa and Panama/ Canal Zone "Coat of Arms" issues, among them the original pen and ink drawings and the final Canal Zone proofs. Although never issued, the one-cent unique "Coat of Arms" envelope is displayed.

Other significant items are Christmas cards printed by the Panama Canal Press for the Canal Zone Post Office and sold at commissary stores, the only official Christmas messages ever printed on U.S. postal stationery. Many unique and rare items are included; those with less than five known are identified with a bullet (•). Included are many newly discovered items documented in the publication "The Postal Stationery of the Canal Zone" revised 2014, by Irwin Gibbs, Editor.

#### References/Bibliography:

- |                     |  |
|---------------------|--|
| Scott               | Specialized Catalog of U.S. Stamps                         |
| UPSS                | The Postal Stationery of the Canal Zone                    |
| Irwin Gibbs         | Various articles UPSS Quarterly and Canal Zone Philatelist |
| Irwin Gibbs, Editor | The Postal Stationery of the Canal Zone, revised 2014      |

## SYNOPSIS – CANAL ZONE Overprints on Panama Postal Stationery - 1907-1924

### 1. SCOPE AND ORGANIZATION

The exhibit covers all the CANAL ZONE Postal Stationery listed in the Scott Catalog and the United Postal Stationery Society listing and related materials from the time the U.S. took possession of the Canal Zone until the Taft Agreement was abrogated on June 30, 1924. All items exhibited are overprints and surcharges on Postal Stationery of Panama printed by the American and Hamilton Bank Note Companies. The Canal Zone Postal Service paid to Panama 40% of the face value of stamps and stationery as issued to Postmasters, settlements made quarterly. The Panama government paid for the overprinting initially done at the Isthmian Canal Commission and subsequently done at the Panama Canal Press at Mount Hope., C.Z.

<u>Item</u>	<u>Scott</u>	<u>UPSS</u>
Postal Cards	UX1-6	S1-S13
Postal Envelopes	U1-5	1- 5
Registration Envelopes	UF1	R1-4

### 2. CONDITION

The warm humid climate of the Canal Zone resulted in tropical weathering. Aging produces color changes in all papers, but these changes are accentuated when subjected to tropical climate. Used examples are scarce and difficult to find in prime condition.

### 3. HIGHLIGHTS

Highlights are the production files of the 1¢ Balboa envelope and the Panama Coat of Arms postal card and envelopes, all of which came from the American Bank Note Company archives. The final signed off proofs are the only Canal Zone stationery proofs known to be in existence. The exhibit includes examples of the rare Christmas messages printed by the Canal Zone Press at Mt. Hope and sold in the Commissary Stores. Included are copies of all known postal stationery specimens from the American Bank Note Company archives, including the only copies of the 1¢ Coat of Arms envelope. An important part of the exhibit is the examples of all the rare Canal Zone Registration Envelopes, both Mint and Used including the 3<sup>rd</sup> printing rejected by the Canal Zone authorities.

### 4. RARITY

Printing of all items was in limited quantities, especially by today's standards. Key items which are listed below include many unique and rare items. All major and minor known varieties except two unique postcards not seen since 1915 are included.

<u>SCOTT</u>	<u>UPSS</u>	<u>DESCRIPTION</u>	<u>NO. REPORTED</u>	<u>FRAME PAGE NO.</u>
<b><u>Postal Cards</u></b>				
UX1a	S1a	Double Surcharge - Mint	5	1 - 5
UX1a	S1a	Double Surcharge - Used	1	1 - 5
UX1b	S1b	Double Surcharge - One Inverted	2	1 - 4
UX1c	S1c	Triple Surcharge - One Inverted	1	1 - 4
UX1d	S2b	Double Surcharge - One Inverted	1	1 - 11
UX1e	S2a	Double Surcharge	1	1 - 11
UX2a	S3a	Double Surcharge - Mint	3	1 - 16
UX2a	S3a	Double	1	1 - 16
	S4c	Canal Zone Overprint Missing Offset on Back	1	2 - 1
UX2a	S4a	Double	1	2 - 2
UX3a	S6a	Double Overprint	1	2 - 7
UX2a	S7a	Double Overprint - Mint	4	2 - 9, 10
UX2e	S8a	Inverted Overprint - Reading Up	1	2 - 11
UX2a	S9b	Double Overprint - One inverted	1	2 - 14
UX4	S11b	Head Only	1	3 - 8
<b><u>Postal Envelopes</u></b>				
U1a	1a	1 cent Head & Overprint Only - Mint	5	5 - 1
U1a	1a	1 cent Head & Overprint Only - Used	3	5 - 2
U1b	1b	1 cent Frame Only	3	5 - 1
U2b	2c	2 cents Head & Overprint Only - Mint	6	5 - 15
U2b	2c	2 cents Head & Overprint Only - Used	3	5 - 15
	2e	2 cents Head & Overprint With - Full Impression Inside	2	6 - 1
	2g	Double Impression on Back	1	6 - 2
U2c	2d	Frame Only - Mint	8	6 - 3
U2c	2d	Frame Only - Used	2	6 - 3
U2d	2b	Frame Double	3	5 - 16
UX1 & UX2		War Tax Overprints	1	6 - 9
U5	5c	Overprint on Back	1	7 - 13
U4	4a	Canal Zone Only	1	6 - 15
<b><u>Registration Envelopes</u></b>				
UF1	R1a	Zero for 10 cents	1	8 - 4
UF1	R1b	Black Printing Double	1	8 - 4
UF1 Footnote		Reject Essay - Mint	2	8 - 16
UF1 Footnote		Reject Essay - Used	1	8 - 16 (1-4-11)

POSTAL CARDS

1905

LITHOGRAPHED BY THE AMERICAN BANK NOTE COMPANY

PANAMA SPECIMEN



FIRST ISSUE - FIRST PRINTING

FEBRUARY 9, 1907

SURCHARGED BY THE ISTHMIAN CANAL COMMISSION AT PANAMA CITY

"CANAL" 15 MM UNWATERMARKED TOTAL PRINTING 50,000



**POSTAL CARDS**  
**FIRST ISSUE - FIRST PRINTING**  
**SHIFTED SURCHARGES**

Placement of the surcharge varies since each card was surcharged individually.



**POSTAL CARDS**  
**FIRST ISSUE - FIRST PRINTING**

- **DOUBLE SURCHARGE, ONE INVERTED**  
**TWO REPORTED EXAMPLES**



- **TRIPLE SURCHARGE, ONE INVERTED**  
**ONLY RECORDED EXAMPLE**



POSTAL CARDS  
FIRST ISSUE - FIRST PRINTING

• DOUBLE SURCHARGE VARIETY

FIVE UNUSED EXAMPLES REPORTED ALL WITH DIFFERENT POSITIONS OF SURCHARGE  
ONLY ONE USED EXAMPLE KNOWN



**POSTAL CARDS**  
**FIRST ISSUE - FIRST PRINTING**  
**FIRST POST OFFICES**

**LA BOCA**

Located on the Panama Railroad Line, the Pacific Terminal of the Canal. Name changed to Balboa May 5, 1909.



**CRISTOBAL**

The Caribbean Terminal of the Canal.



**POSTAL CARDS**  
**FIRST ISSUE - FIRST PRINTING**  
**FIRST POST OFFICES**

**ANCON**

The most important post office on the Pacific side. Stamp and postal stationery sales accounted for 13% of the Zone's total sales. Closed December 31, 1956.



**CULEBRA**

First location of the Canal's administration building. Closed September 30, 1927.





**POSTAL CARDS**  
**FIRST ISSUE - FIRST PRINTING**  
**EARLY POST OFFICES**

**ANCON STATION A**

Opened in 1905 in former French Canal headquarters, downtown Panama City. Closed April 30, 1908.



**TABERNILLA**

Closed February 14, 1912.



**POSTAL CARDS**  
**FIRST ISSUE - FIRST PRINTING**  
**EARLY POST OFFICES**

Several post offices along Charges River abandoned when water of Gatun Lake rose behind Gatun Dam.

**SAN PABLO**  
Closed February 14, 1912.



**GATUN**  
Old post office moved to higher ground in 1912.



**POSTAL CARDS  
FIRST ISSUE - FIRST PRINTING  
POSTAL RATES**

**DESTINATION: EL PASO, TEXAS; FORWARDED TO CANANEA, MEXICO  
ONE-CENT U.S. RATE**



**DESTINATION: BERLIN, GERMANY  
TWO-CENT FOREIGN RATE**



POSTAL CARDS  
FIRST ISSUE - SECOND PRINTING  
MAY 3, 1907

LITHOGRAPHED BY THE AMERICAN BANK NOTE COMPANY  
SURCHARGED BY THE ISTHMIAN CANAL COMMISSION  
TOTAL PRINTING 10,000 "CANAL" 13 MM UNWATERMARKED



• DOUBLE OVERPRINTS, ONE INVERTED ONLY KNOWN COPIES



POSTAL CARDS  
FIRST ISSUE - SECOND PRINTING

DESTINATION: NEW YORK  
ONE-CENT U.S. RATE



DESTINATION: DRESDEN, GERMANY  
TWO-CENT FOREIGN RATE



**PRODUCTION FILE**

**ONE-CENT BALBOA**

In 1906 Panama changed printers and ordered a new one-cent stamp from the Hamilton Bank Note Company. The design came from an engraving by Edwin Gunn from a retouched photo of Vasco Nunez de Balboa. The engraving was then litho-transferred to create the vignette.

**ORIGINAL PHOTOGRAPH OF A PORTRAIT OF VASCO NUNEZ  
DE BALBOA WITH 1906 PANAMA STAMP AFFIXED**



# POSTAL CARDS

## SECOND ISSUE

The Republic of Panama ordered postal cards lithographed by the Hamilton Bank Note Company, New York with the same design as the one-cent stamp. Cards were overprinted "Canal Zone" in black by the Isthmian Canal Commission at Panama City until 1909, thereafter at Mount Hope, Canal Zone, by the Panama Canal Press. Cards were overprinted individually on ten separate occasions using a single type form and producing seven distinguishable and readily identifiable types of overprint. Six read down, one reads up, and they can be identified by length of overprint, spacing between the "Canal" and "Zone" or style of font used (Antique or Roman). The earliest postmark reported was February 29, 1908; printings continued through 1912.

### BASIC REPUBLIC OF PANAMA CARD



**TYPE ONE    ANTIQUE TYPE READING DOWN  
7 MM SPACING BETWEEN "CANAL" AND "ZONE"  
"CANAL" 13 MM LONG    165,000 ISSUED**



POSTAL CARDS  
SECOND ISSUE - TYPE ONE

SHIFTED OVERPRINT



BROKEN "O" IN "ZONE"





POSTAL CARDS  
SECOND ISSUE - TYPE ONE

FAINT OVERPRINT

UNION POSTALE UNIVERSELLE

REPÚBLICA DE PANAMÁ

ESCRÍBASE EN ESTE LADO LA DIRECCIÓN SOLAMENTE


*A*

*en*

Y Á LA VUELTA LA COMUNICACIÓN  
UNIÓN POSTAL UNIVERSAL

CARTE POSTALE  
Coté réservé à l'adresse

TARJETA POSTAL



"C" AND "Z" OF "CANAL ZONE" FAINT

UNION POSTALE UNIVERSELLE

REPÚBLICA DE PANAMÁ

ESCRÍBASE EN ESTE LADO LA DIRECCIÓN SOLAMENTE

*A*

*en*

Y Á LA VUELTA LA COMUNICACIÓN  
UNIÓN POSTAL UNIVERSAL

CARTE POSTALE  
Coté réservé à l'adresse

TARJETA POSTAL



POSTAL CARDS  
SECOND ISSUE - TYPE ONE

• DOUBLE OVERPRINTS  
THREE REPORTED UNUSED, ONE REPORTED USED



POSTMARKED: N.Y. & CANAL ZONE R.P.O. JAN 2 1910 NORTH  
Seapost operated between 1906 and 1912.



**POSTAL CARDS**  
**SECOND ISSUE - TYPE TWO**  
**EARLIEST POSTMARK: SEPTEMBER 14, 1908**

**ANTIQUÉ TYPE READING DOWN**  
**7 3/4 MM BETWEEN "CANAL" AND "ZONE"**  
**"CANAL" 15 MM LONG**  
**30,000 ISSUED**



• "CANAL ZONE" MISSING  
OFFSET ON BACK



POSTAL CARDS  
SECOND ISSUE - TYPE TWO

• MISCUT CARD WITH DOUBLE OVERPRINT ONLY KNOWN COPY



POSTMARKED: ANCON C.Z. SEP 14 1908  
EARLIEST CANCELLATION REPORTED  
Tied with one-cent 1907 Hamilton Bank Note Issue.



**POSTAL CARDS**  
**SECOND ISSUE - TYPE TWO**  
**RATES**

**POSTMARKED: STATION A CRISTOBAL, CANAL ZONE JAN 26 1910**  
**DESTINATION: NEW YORK ONE-CENT U.S. MAINLAND RATE**  
Station A was located at Porto Bello, Panama.



**POSTMARKED: CRISTOBAL, C.Z. MAR 29 1909**  
**DESTINATION: TAMMERFORS, FINLAND TWO-CENT FOREIGN SURFACE RATE**



**POSTAL CARDS**  
**SECOND ISSUE - TYPE THREE**  
**EARLIEST DATE REPORTED: MARCH 1, 1909**

**ANTIQUÉ TYPE READING DOWN**  
**8 MM SPACING BETWEEN "CANAL" AND "ZONE"**  
**"CANAL" 12 3/4 MM LONG**  
**50,000 ISSUED**



**SHIFTED OVERPRINT**



POSTAL CARDS  
SECOND ISSUE - TYPE THREE

EARLIEST CANCELLATION REPORTED: COROZAL C.Z. MAR 1 1909



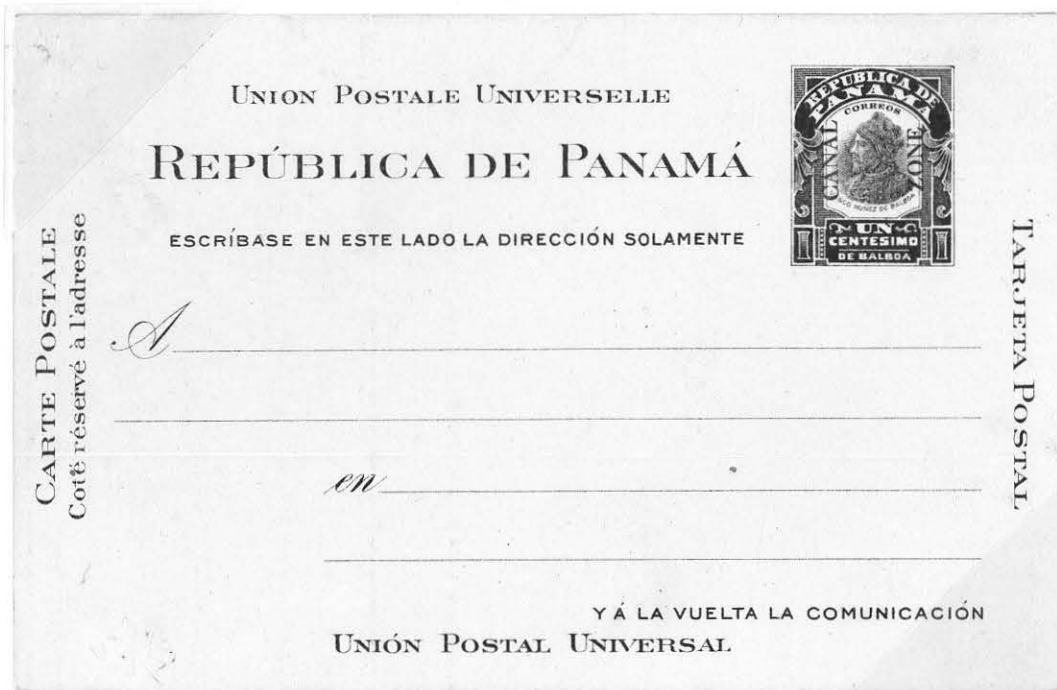
POSTMARKED: SAN PABLO C.Z. APR 27 1909

A construction townsite. Closed when waters of Gatun Lake commenced to rise.

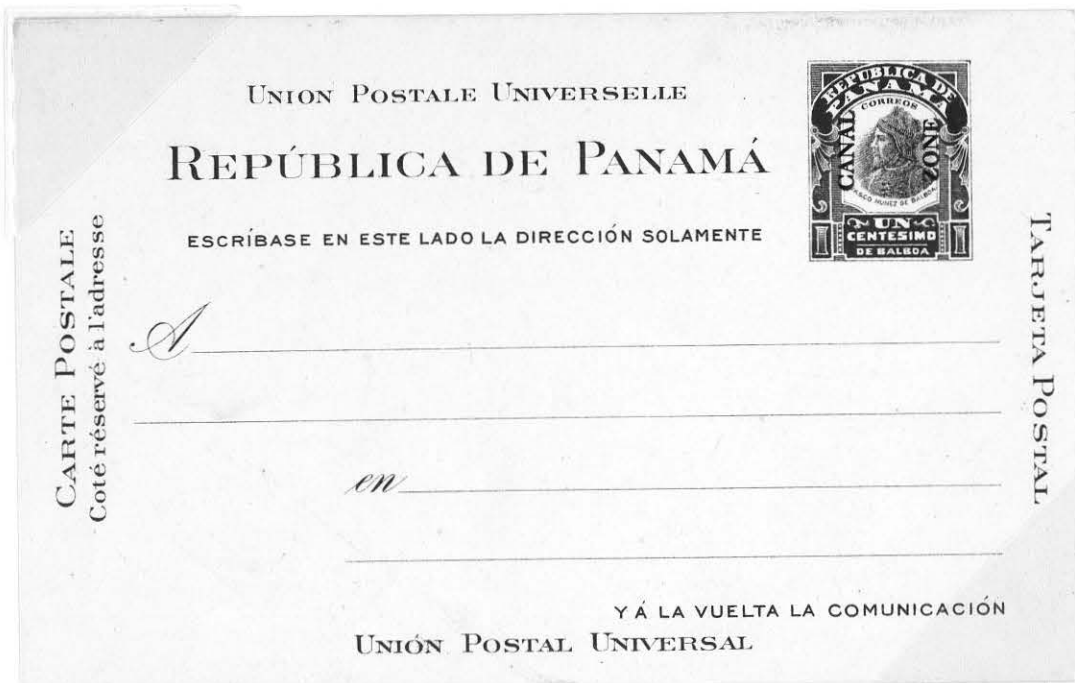


**POSTAL CARDS**  
**SECOND ISSUE - TYPE FOUR**  
**EARLIEST DATE REPORTED: NOVEMBER 10, 1910**

**ROMAN TYPE READING UP**  
**9 1/4 MM BETWEEN "CANAL" AND "ZONE"**  
**"CANAL" 10 1/2 MM LONG**  
**40,000 ISSUED**



**BROKEN "Z" OF "ZONE"**





POSTAL CARDS  
SECOND ISSUE - TYPE FOUR

• "CANAL ZONE" DOUBLE  
ONLY RECORDED EXAMPLE



SHIFTED SURCHARGE



**POSTAL CARDS**  
**SECOND ISSUE - TYPE FOUR**

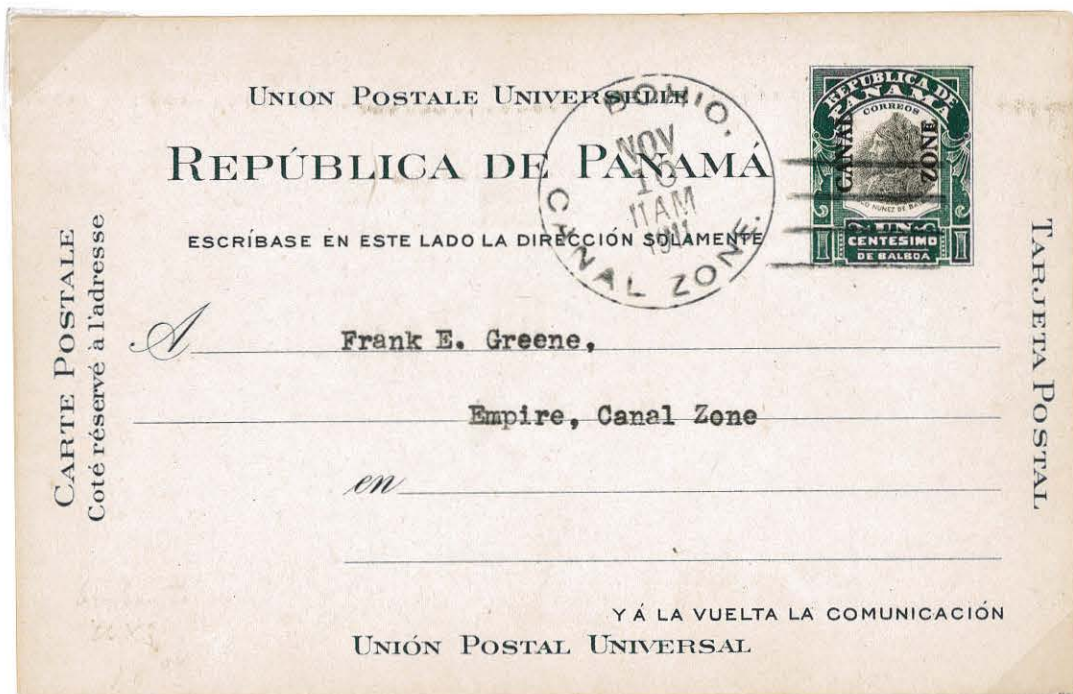
• **TORO POINT**

One of three known postal markings from Toro Point, a name never used officially. Designated as "Cristobal Station B" in 1911. Total stamp sales for the five-year operation of "Cristobal Station B" was less than \$2500.



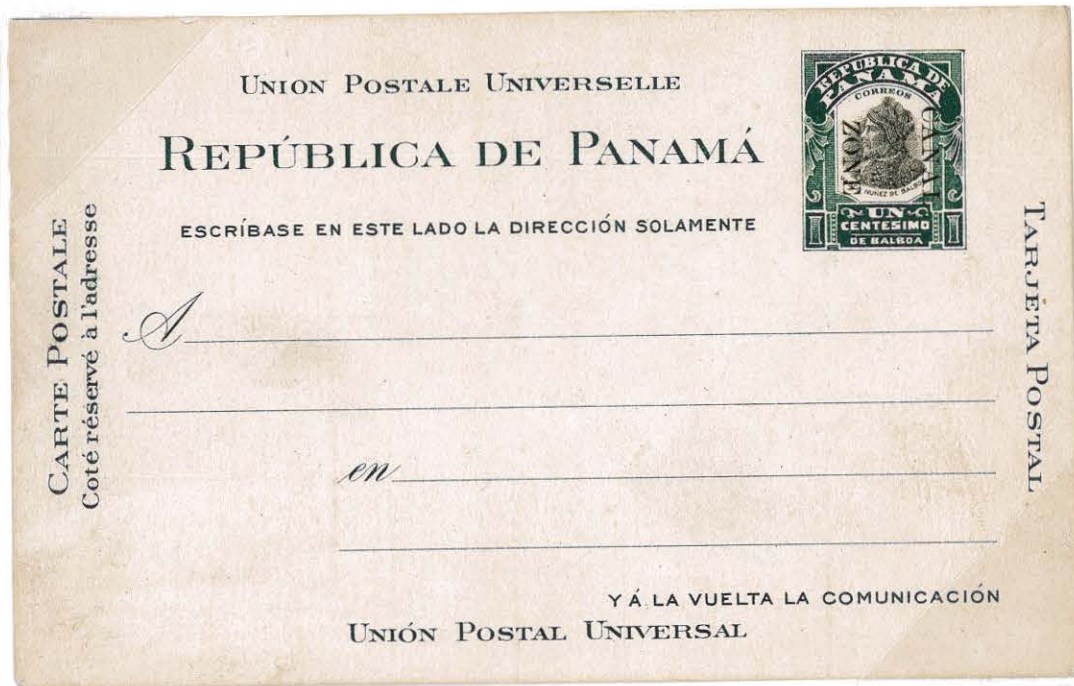
**BOHIO**

One of the first post offices. Closed December 1, 1911, when Gatun Lake rose.



**POSTAL CARDS**  
**SECOND ISSUE - TYPE FIVE**  
**EARLIEST POSTMARK: MAY 10, 1911**

**8 1/4 MM BETWEEN "CANAL" AND "ZONE"**  
**"CANAL" 13 MM LONG**  
**40,000 ISSUED**

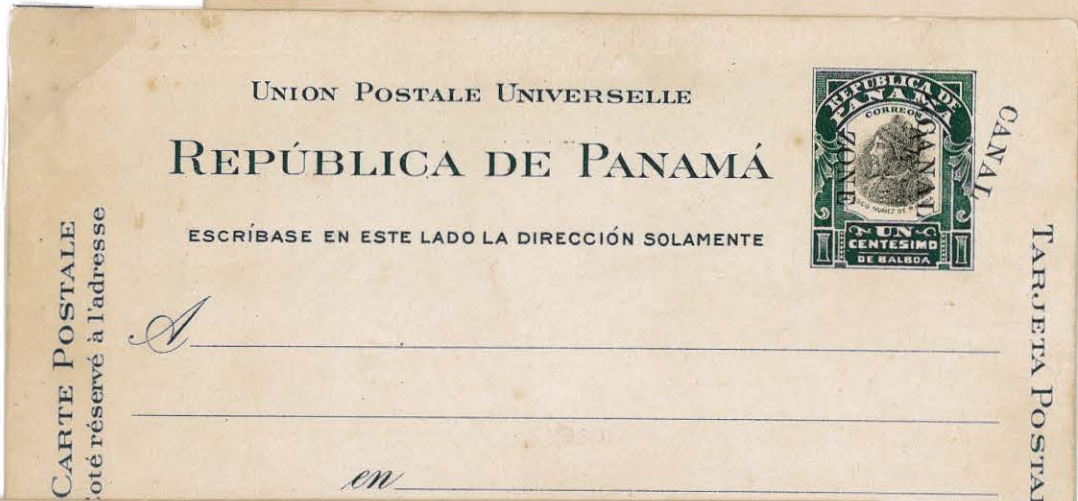
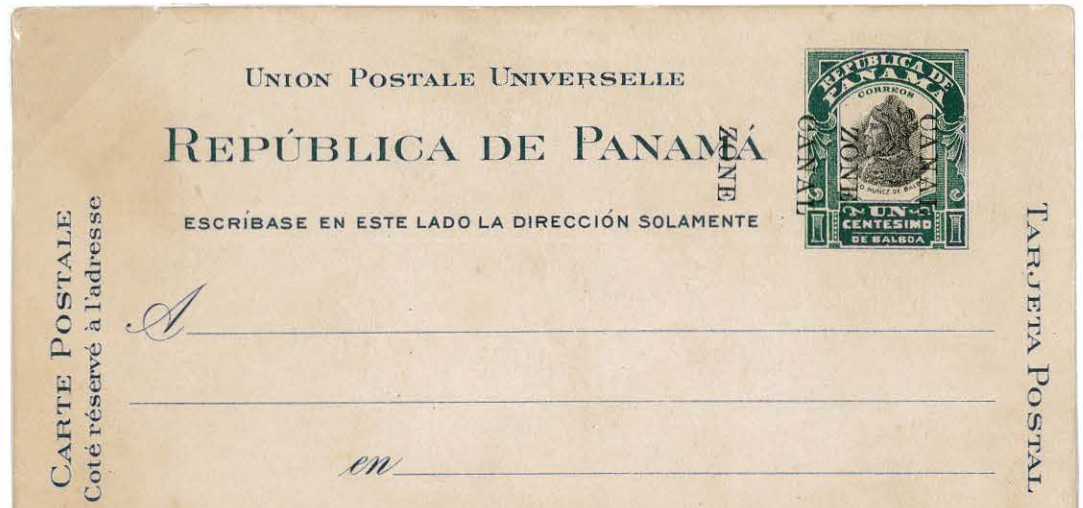


• **DOUBLE OVERPRINT**



**POSTAL CARDS  
SECOND ISSUE - TYPE FIVE**

• **DOUBLE OVERPRINTS**



**POSTAL CARDS**  
**SECOND ISSUE - TYPE SIX**  
**EARLIEST REPORTED DATE - DECEMBER 20, 1911**

**ANTIQUÉ TYPE - NO SERIFS ON "A" S OR "N" S**  
**8 MM SPACING BETWEEN "CANAL" AND "ZONE" PERIOD AFTER "ZONE"**  
**40,000 ISSUED**



• **"ZONE CANAL" READING UP**  
**ONLY RECORDED EXAMPLE OF THIS ERROR**



POSTAL CARDS  
SECOND ISSUE - TYPE SIX

EARLY POSTMARK: JULY 5 1912



SHIFTED OVERPRINT



**POSTAL CARDS**  
**SECOND ISSUE - TYPE SEVEN**  
**EARLIEST REPORTED DATE: SEPTEMBER 19, 1912**

**ANTIQUE TYPE READING DOWN**  
**NO SERIFS ON "A" S OR "N" S**  
**8 MM SPACING BETWEEN "CANAL" AND "ZONE"**  
**"ZONE" WITHOUT PERIOD**  
**40,000 ISSUED**

UNION POSTALE UNIVERSELLE

**REPÚBLICA DE PANAMÁ**

ESCRÍBASE EN ESTE LADO LA DIRECCIÓN SOLAMENTE

*A* \_\_\_\_\_

\_\_\_\_\_

*en* \_\_\_\_\_

\_\_\_\_\_

Y Á LA VUELTA LA COMUNICACIÓN  
UNIÓN POSTAL UNIVERSAL

CARTE POSTALE  
Coté réservé à l'adresse

REPÚBLICA DE PANAMÁ  
CORREOS  
ZONA  
CANAL  
DE PANAMA  
UNION  
CENTESIMO  
DE BALBOA

TARJETA POSTAL

**DROPPED "O" IN "ZONE"**

UNION POSTALE UNIVERSELLE

**REPÚBLICA DE PANAMÁ**

ESCRÍBASE EN ESTE LADO LA DIRECCIÓN SOLAMENTE

*A* \_\_\_\_\_

\_\_\_\_\_

*en* \_\_\_\_\_

\_\_\_\_\_

Y Á LA VUELTA LA COMUNICACIÓN  
UNIÓN POSTAL UNIVERSAL

CARTE POSTALE  
Coté réservé à l'adresse

REPÚBLICA DE PANAMÁ  
CORREOS  
ZONA  
CANAL  
DE PANAMA  
UNION  
CENTESIMO  
DE BALBOA

TARJETA POSTAL

POSTAL CARDS  
SECOND ISSUE - TYPE SEVEN

• DOUBLE OVERPRINT, ONE INVERTED  
ONLY KNOWN EXAMPLE



POSTMARKED: CULEBRA, C.Z. PRINTED MATTER  
ONE-CENT FOREIGN RATE ON PRINTED MATTER



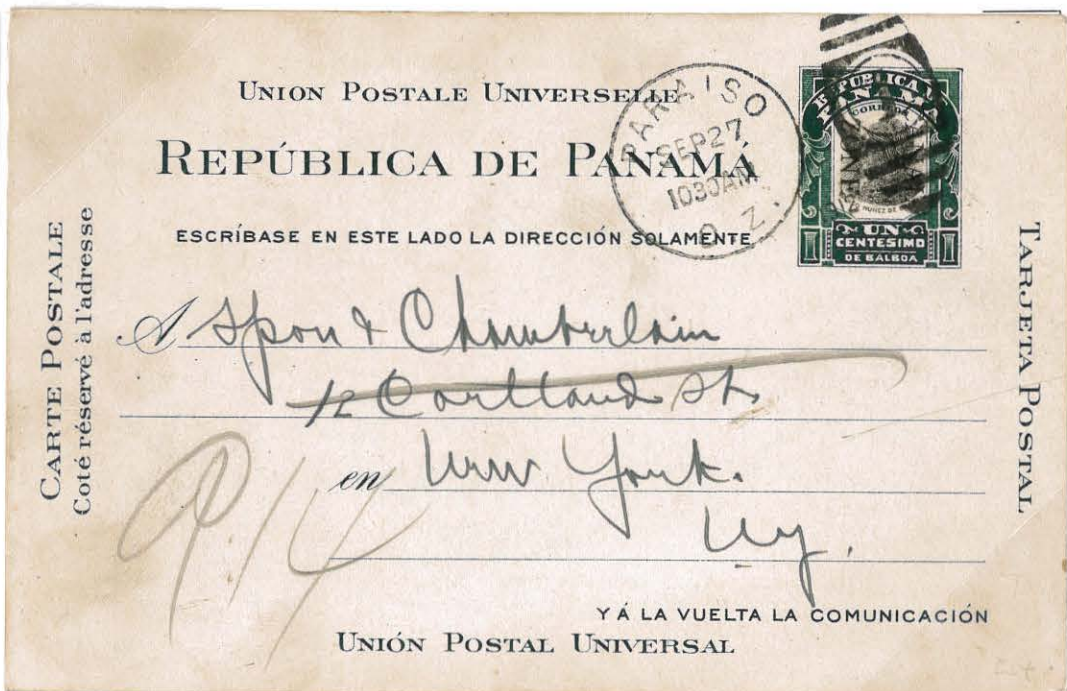


POSTAL CARDS  
SECOND ISSUE - TYPE SEVEN

WITH "1912 AMERICAN RED CROSS" CHRISTMAS SEAL



DESTINATION: U.S. ONE-CENT RATE  
POSTMARKED: PARAISO C.Z. SEP 27 1912  
EARLY POSTMARK



## POSTAL CARDS

POSTAL CARD OF THE REPUBLIC OF PANAMA  
LITHOGRAPHED BY THE AMERICAN BANK NOTE COMPANY

In 1912 Panama changed postal stationery suppliers from Hamilton Bank Note Co. to American Bank Note Co. Panama had no need for a one-cent postal card and the Canal Zone did. The American Bank Note Co. designed a one-cent postal card for Canal Zone use to be similar to the Hamilton card with the words "Canal Zone" incorporated into the vignette die. A Panama die proof was prepared and approved by Panama authorities.

### INDEX CARD AND DIE PROOF ON INDIA

Panama, Republic of

Postal card

F 3415

9/25/12

1¢

INDEX COPY

C 1060

DIE PROOF  
OF FRAME



Surcharge "Canal Zone"  
Steel die-Litho transfer.  
Border engraved by Seymour  
Port. center-Vasco Nunez de Balboa-Laydown of F 1518  
P.E.M.-See F 1518.  
Color-border Green, center Black. Litho print.

**POSTAL CARDS**  
**THIRD ISSUE - FIRST PRINTING**  
**EARLIEST REPORTED DATE: MARCH 27, 1915**

First and second printing total 634,000. In 1937, 156,000 copies of the third, fourth and fifth issues were burned.  
The exact number of the third issue is not known.

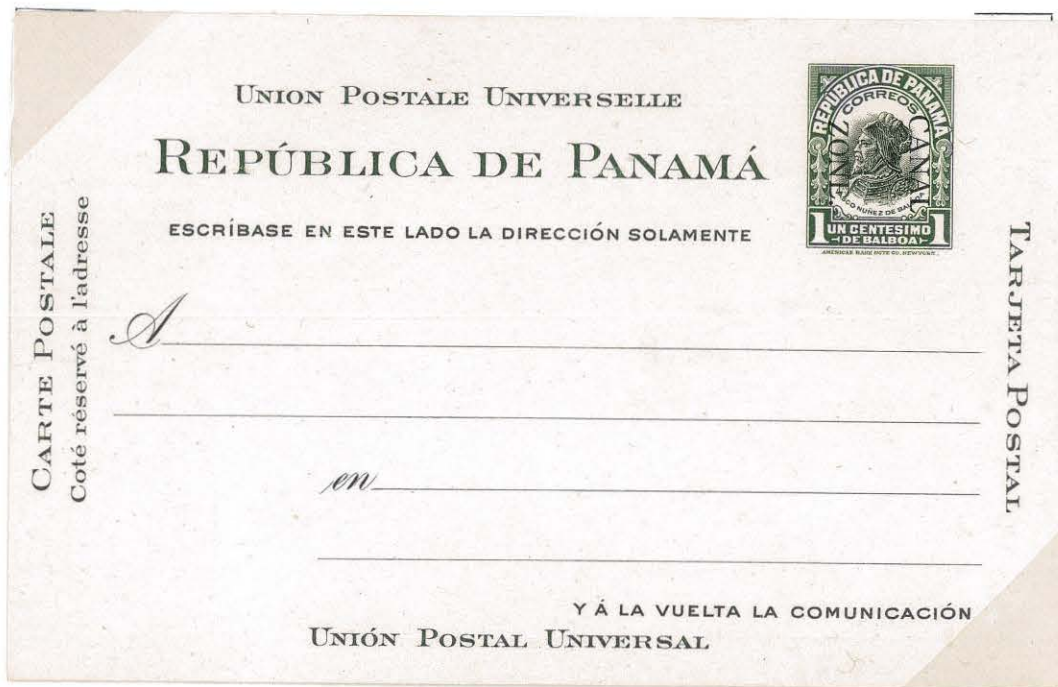
**FIRST PRINT ORDER**  
**F3415 SEPT. 9, 1912**



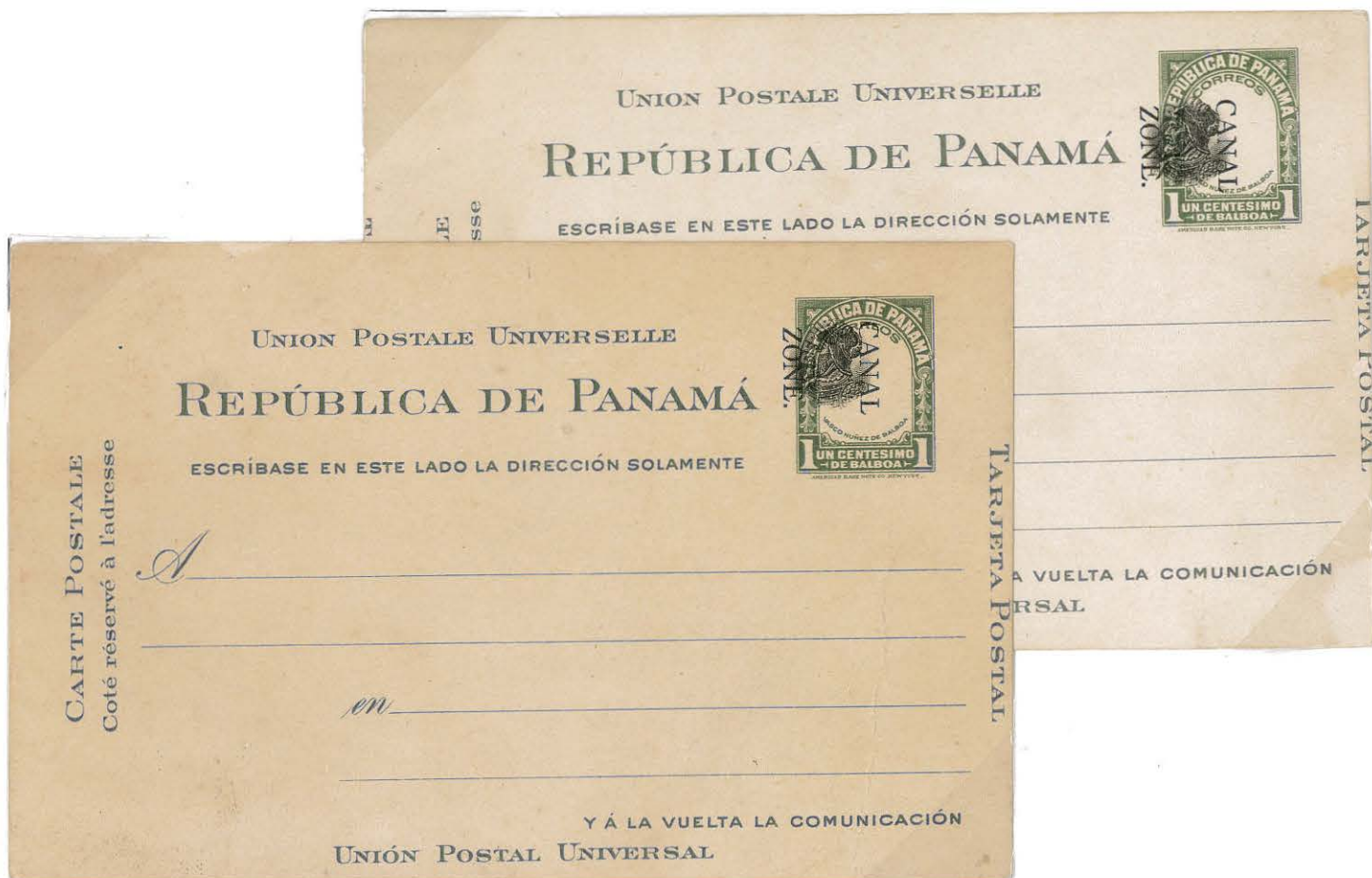
**LAST PRINT ORDER**  
**F4803 DEC. 14, 1915**

POSTAL CARDS  
THIRD ISSUE - FIRST PRINTING

TOP OF THE "E" OF "ZONE" TOUCHES BREASTPLATE

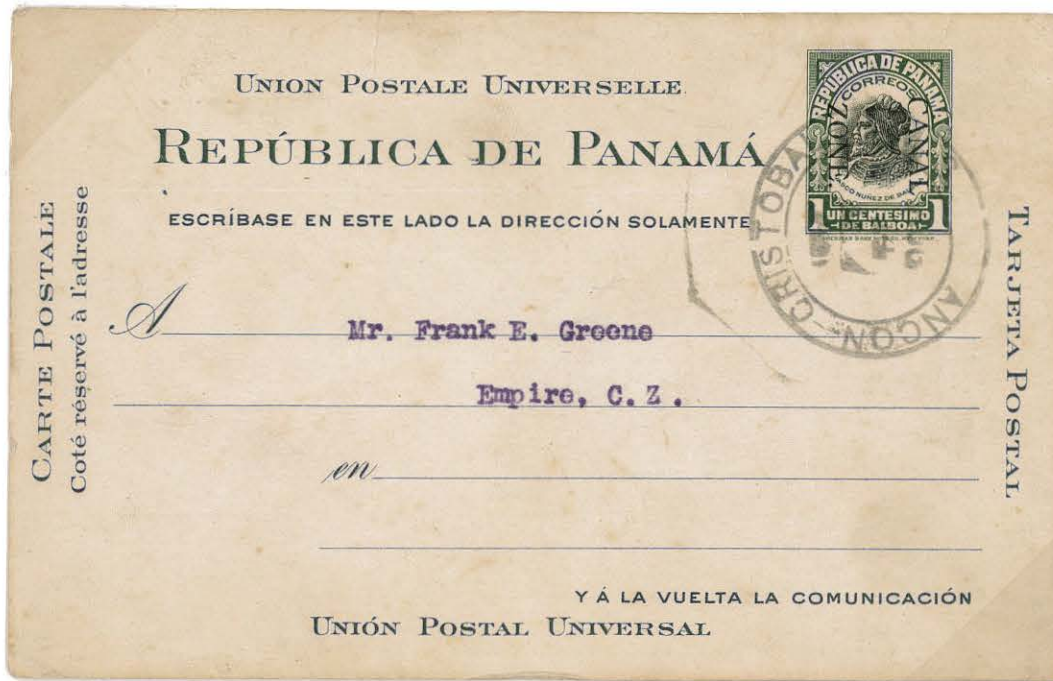


SHIFTED FRAME SHOWS VIGNETTE AND "CANAL ZONE" WERE PRINTED IN ONE PRESS RUN



**POSTAL CARDS**  
**THIRD ISSUE - FIRST PRINTING**

**POSTMARKED: ANCON - CRISTOBAL**  
**RAILWAY MAIL SERVICE**  
Service started on Panama Railroad January 1, 1905.



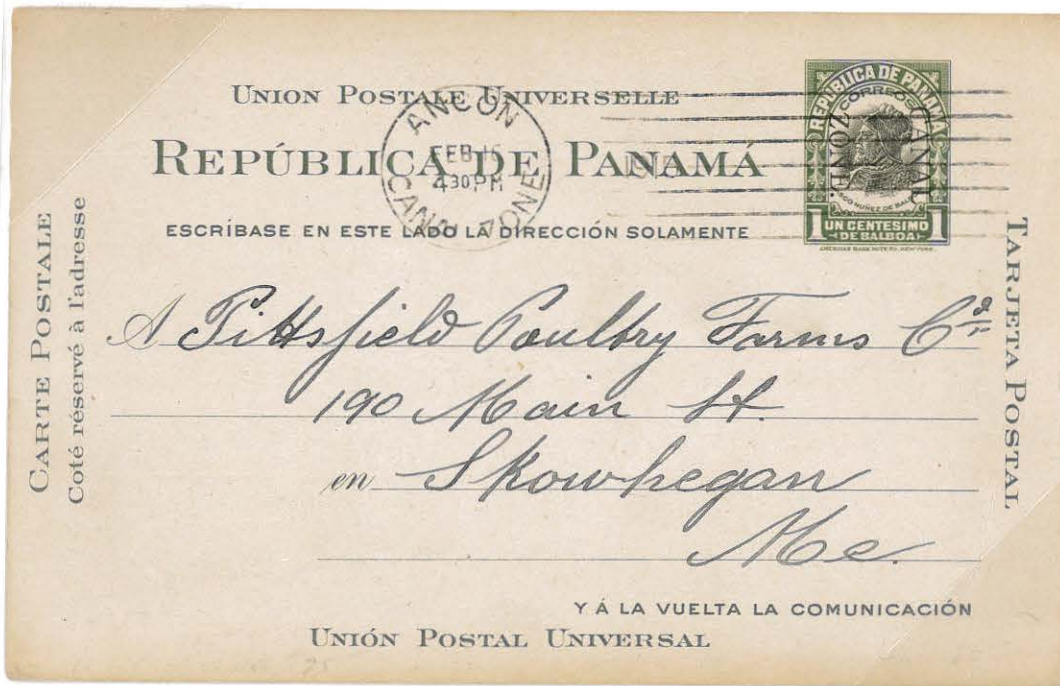
**DESTINATION: TABOGA ISLAND**  
**SITE OF ALIEN INTERNMENT CAMP, WORLD WAR I**



**POSTAL CARDS**  
**THIRD ISSUE - FIRST PRINTING**  
**MACHINE CANCELLATIONS**

Two Cummins cancelling machines were purchased in 1913 for Ancon and Cristobal.  
Due to climatic conditions, the machines were scrapped in 1936 and replaced.

**POSTMARKED: ANCON CANAL ZONE FEB 16 1915**



**POSTMARKED: CRISTOBAL CANAL ZONE SEP 11 1916**



**POSTAL CARDS**

**THIRD ISSUE - FIRST PRINTING**

**VIA NEW YORK**

Mail destined for Europe was transhipped to New York and then dispatched to Europe at two-cent rate.

**DESTINATION: LEIPSIG, GERMANY**

**POSTMARKED: CRISTOBAL C.Z. APR 5 1916**

**WITH ONE-CENT ISSUE OF 1913**



**DESTINATION: ELBE, GERMANY**

**POSTMARKED: CRISTOBAL C.Z. JUL 25 1916**

**WITH ONE-CENT ISSUE OF 1913**



**POSTAL CARDS**  
**THIRD ISSUE - FIRST PRINTING**  
**FOREIGN POSTAL RATE - TWO CENTS**

**DESTINATION: BERNE, SWITZERLAND**  
**POSTMARKED: ANCON CANAL ZONE DEC 31 1916**  
**WITH ONE-CENT ISSUE OF 1913**



**DESTINATION: S. GRAVEHAGE, NETHERLANDS**  
**POSTMARKED: GATUN C.Z. NOV 28 1914**  
**WITH ONE-CENT ISSUE OF 1913**





POSTAL CARDS  
THIRD ISSUE - SECOND PRINTING

SPECIMENS FROM THE AMERICAN BANK NOTE COMPANY ARCHIVES  
PRINT ORDERS F5268 1916; F5657 JULY 8 1918; F6235 JAN. 8 1920;  
AND PRINT ORDER F6567, LAST PRINT ORDER OF THIS ISSUE

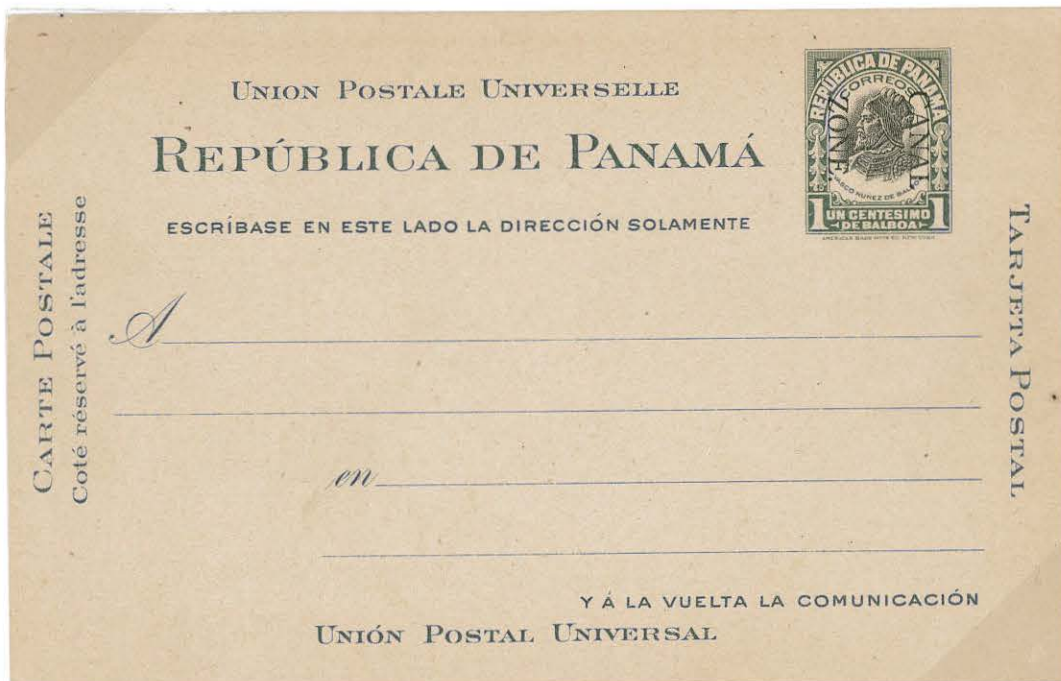


**POSTAL CARDS**  
**THIRD ISSUE - SECOND PRINTING**  
**EARLIEST POSTMARK REPORTED: FEBRUARY 3, 1915**

- Green frame and text missing; could be proof.



Second printing differs from first printing in the placement of "Canal Zone" in the vignette die.  
Second printing has a space between the "E" of "Zone" and the breastplate.



POSTAL CARDS

THIRD ISSUE - SECOND PRINTING

TWO CENTS CORRECT FOREIGN RATE POSTAGE DUE AT DESTINATION

1 1/2 PENCE PAID TO COVER ADDITIONAL POSTAGE



"T" INDICATES ADDITIONAL POSTAGE TO BE COLLECTED

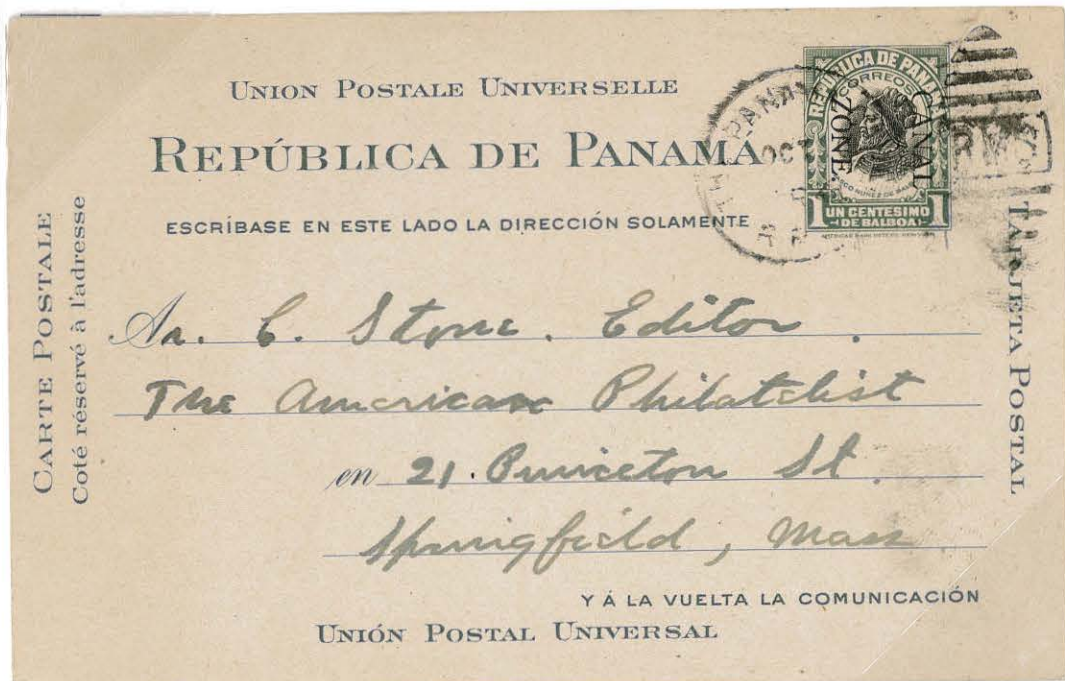


**POSTAL CARDS  
THIRD ISSUE - SECOND PRINTING**

**INTERRUPTED FIRST FLIGHT FROM CANAL ZONE TO U.S.  
OCTOBER 6, 1920**



**POSTMARKED: THE PANAMA CANAL RPO TR4    OCT 9 1921  
RAILWAY MAIL SERVICE**



**POSTAL CARDS**  
**THIRD ISSUE - SECOND PRINTING**  
**ABROGATION OF THE TAFT AGREEMENT**  
**INTERIN PERIOD**

The U.S. abrogated the Taft Agreement effective June 30, 1924. During July and August, 1924, Panama overprints, as well as the new Canal Zone stamps and postal stationery, were valid.

**POSTMARKED: CRISTOBAL CANAL ZONE      AUG 8 1924**



**POSTMARKED: CRISTOBAL CANAL ZONE      OCT 3 1924**

Postal cards exempted with printing inscribed by purchaser after interim period.



POSTAL CARDS  
THIRD ISSUE - SECOND PRINTING  
ORDER FORM

British American Tobacco Company, Ltd. order form for tobacco products on reverse of card.

UNION POSTALE UNIVERSELLE  
REPÚBLICA DE PANAMÁ


ESCRÍBASE EN ESTE LADO LA DIRECCIÓN SOLAMENTE

*A* British American Tobacco Company., Ltd.  
BOX 176.  
ANCON.  
CANAL ZONE.

Y Á LA VUELTA LA COMUNICACIÓN  
UNIÓN POSTAL UNIVERSAL

CARTE POSTALE  
Coté réservé à l'adresse

TARJETA POSTAL



GAILLARD, CANAL ZONE POSTMARKED: CULEBRA

Forty-Seventh Infantry Regiment stationed at the Mountain Post above the Culebra Cut, coolest part of the Zone on the Pacific side.

UNION POSTALE UNIVERSELLE  
REPÚBLICA DE PANAMÁ

ESCRÍBASE EN ESTE LADO LA DIRECCIÓN SOLAMENTE

*A* Mrs. Karl R. Schaltis  
1029 Van Slyke Ave.,  
St. Paul  
Minnesota - U.S.A.

Y Á LA VUELTA LA COMUNICACIÓN  
UNIÓN POSTAL UNIVERSAL

CARTE POSTALE  
Coté réservé à l'adresse  
*Karl R. Schaltis  
Panama*

TARJETA POSTAL



POSTAL CARDS

FOURTH ISSUE

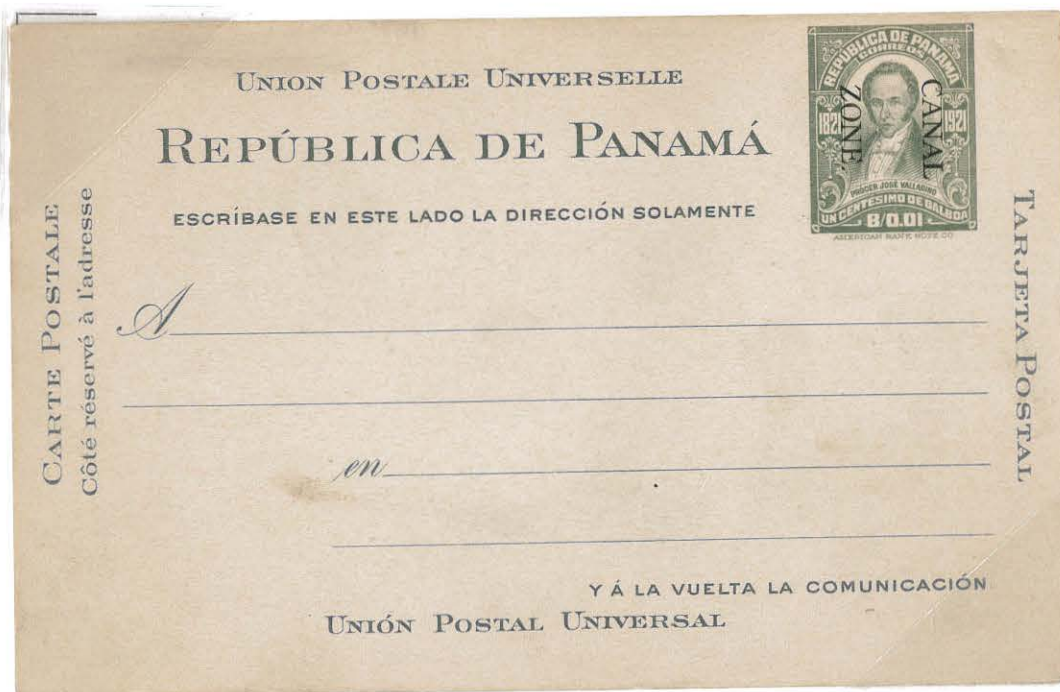
NOVEMBER 13, 1921

Commemorating the 100th anniversary of independence from Spain. The card has a portrait of Procer Jose Vallarino, signer of Panama's Declaration of Independence. Lithographed in color by the American Bank Note Co.

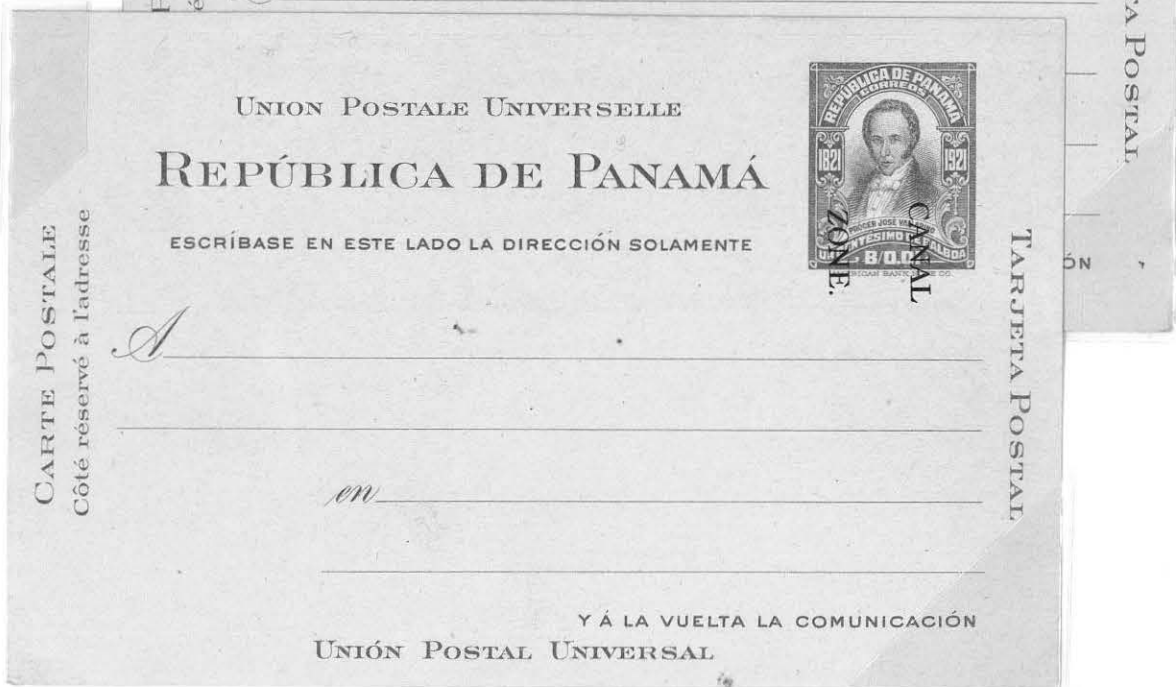
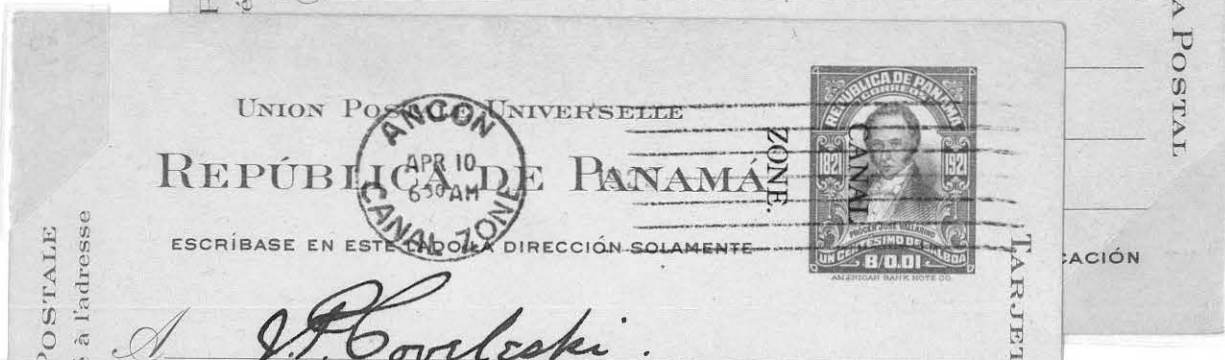
PANAMA CARD AND CANAL ZONE SPECIMEN



"CANAL ZONE" OVERPRINTED IN BLACK BY THE AMERICAN BANK NOTE COMPANY  
50,000 PRINTED UNKNOWN NUMBER DESTROYED



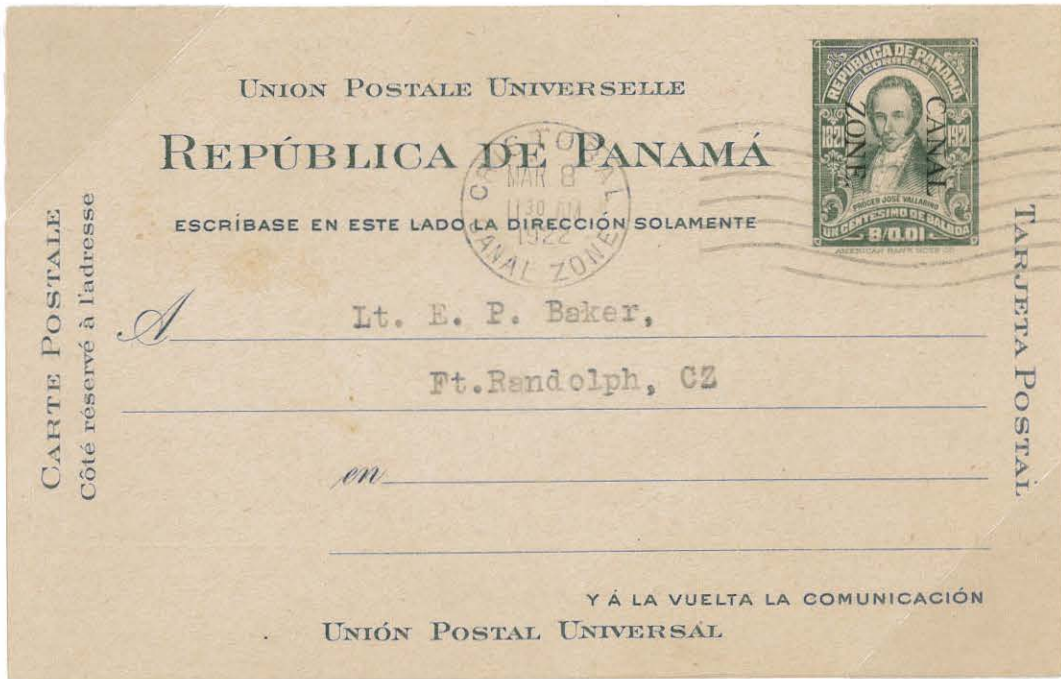
POSTAL CARDS  
FOURTH ISSUE  
SHIFTED OVERPRINTS





**POSTAL CARDS  
FOURTH ISSUE - POSTAL RATES**

**DESTINATION: CANAL ZONE ONE-CENT RATE**



**DESTINATION: U.S. ONE-CENT RATE**



**POSTAL CARDS  
FOURTH ISSUE  
TWO-CENT FOREIGN USAGE RATE  
DESTINATION: LONDON, ENGLAND**



**ABROGATION OF THE TAFT AGREEMENT**

**INTERIM PERIOD**

The U.S. abrogated the Taft Agreement effective June 30, 1924. During July and August, 1924, Panama overprints, as well as the new Canal Zone stamps and postal stationery, were valid.

**DESTINATION: CONSTANTINOPLE, TURKEY      JULY 14 1924**



POSTAL CARDS

FIFTH ISSUE

JANUARY 1924

Typographed and embossed by the American Bank Note Company.

PANAMA SPECIMEN AND CARD



CANAL ZONE SPECIMEN

"Canal Zone" added to the die by the American Bank Note Company.

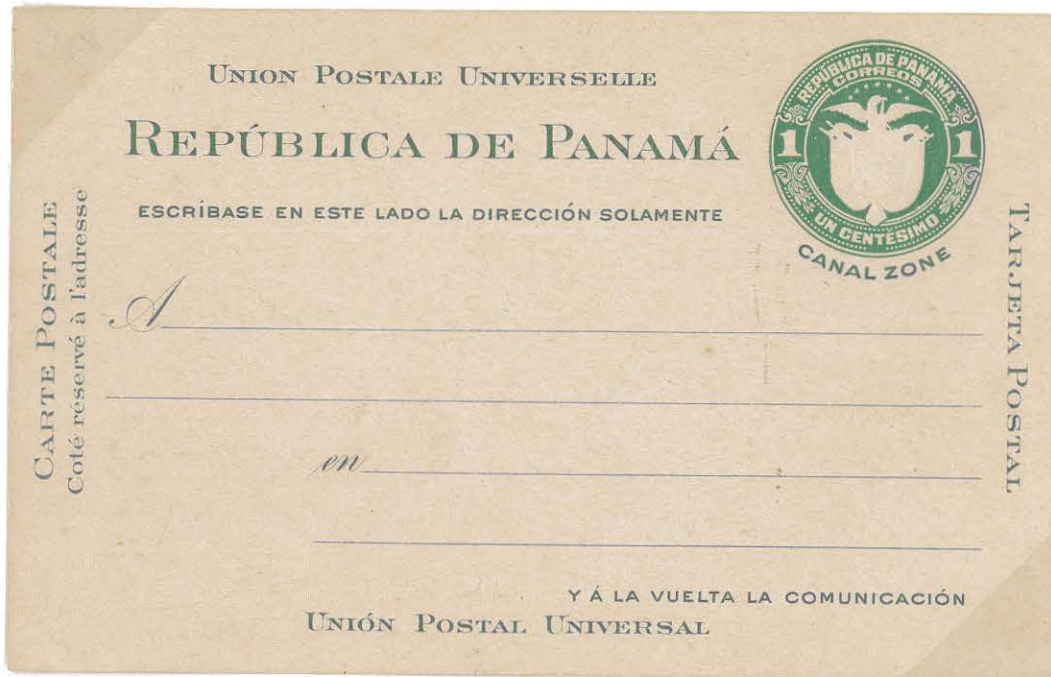


POSTAL CARDS

FIFTH ISSUE

JANUARY 1924

60,000 PRINTED UNKNOWN NUMBER DESTROYED



EARLIEST REPORTED POSTMARK: APR 19 1924



**POSTAL CARDS  
FIFTH ISSUE  
ABROGATION OF THE TAFT AGREEMENT**

**INTERIM PERIOD**

The U.S. abrogated the Taft Agreement effective June 30, 1924. During July and August, 1924, Panama overprints, as well as the new Canal Zone stamps and postal stationery, were valid.

**POSTMARKED: PEDRO MIGUEL C.Z. JUL 5 1924**



**POSTMARKED: GATUN C.Z. JUL 10 1924**  
International Association of Machinists Meeting Announcement.



**POSTAL CARDS  
CHRISTMAS GREETINGS**

Christmas messages were printed in very limited quantities on the reverse side of the Third Issue, both First and Second Printings, and the Fourth Issue. Postal Cards with Christmas messages were printed by the Panama Canal Press at Mount Hope from 1913 through 1923 and sold at the commissary stores. It is believed to be the first instance where a U.S. government postal card was printed with a Christmas greeting. Less than 50 of these cards have been reported, and none have been reported for 1917.

**1913**

**EARLIEST REPORTED CARD CANCELED    DECEMBER 17, 1913  
ONLY 200 OR 300 CARDS PRINTED  
PRINTED ON THIRD ISSUE - FIRST PRINTING**



POSTAL CARDS  
CHRISTMAS GREETINGS  
1914

10,000 ORDERED AND DELIVERED  
DECEMBER 6, 1914  
PRINTED ON THIRD ISSUE - FIRST PRINTING

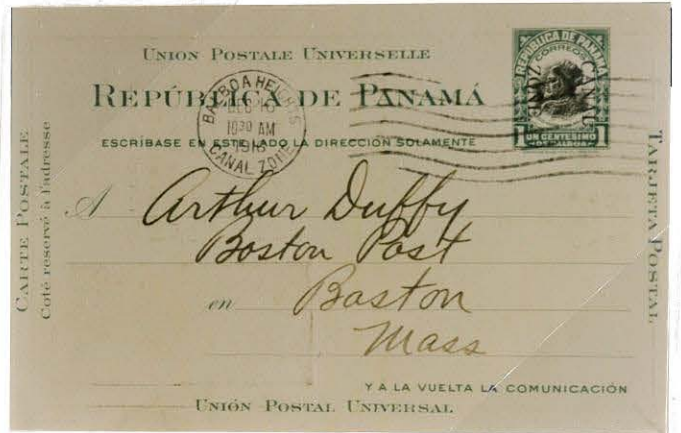
WHEN FIRST ORDER SOLD OUT,  
3,000 OF A SIMILAR CARD WERE ORDERED  
PRINTED ON THIRD ISSUE - FIRST PRINTING



**POSTAL CARDS  
CHRISTMAS GREETINGS  
PRINTED AT MOUNT HOPE, CANAL ZONE**



**1915  
PRINTED ON THIRD ISSUE  
FIRST PRINTING**



**1916  
PRINTED ON THIRD ISSUE  
FIRST PRINTING**





**POSTAL CARDS  
CHRISTMAS GREETINGS  
PRINTED AT MOUNT HOPE, CANAL ZONE**



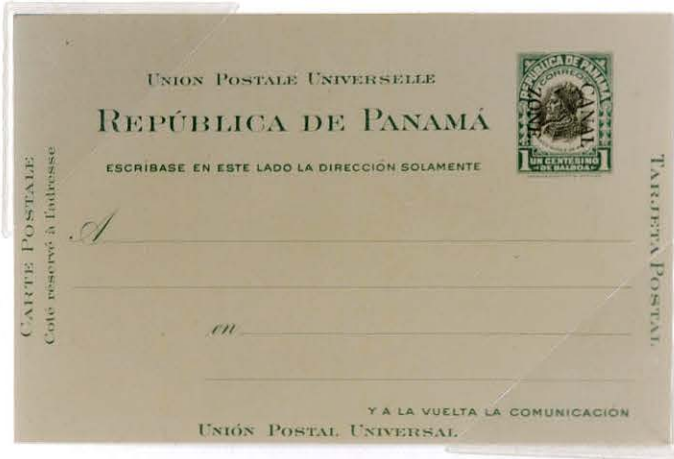
**YEAR ??  
ONLY CARD KNOWN  
PRINTED ON THIRD ISSUE  
SECOND PRINTING**



**PRINTED ON THIRD ISSUE  
SECOND PRINTING**



POSTAL CARDS  
 CHRISTMAS GREETINGS  
 PRINTED AT MOUNT HOPE, CANAL ZONE



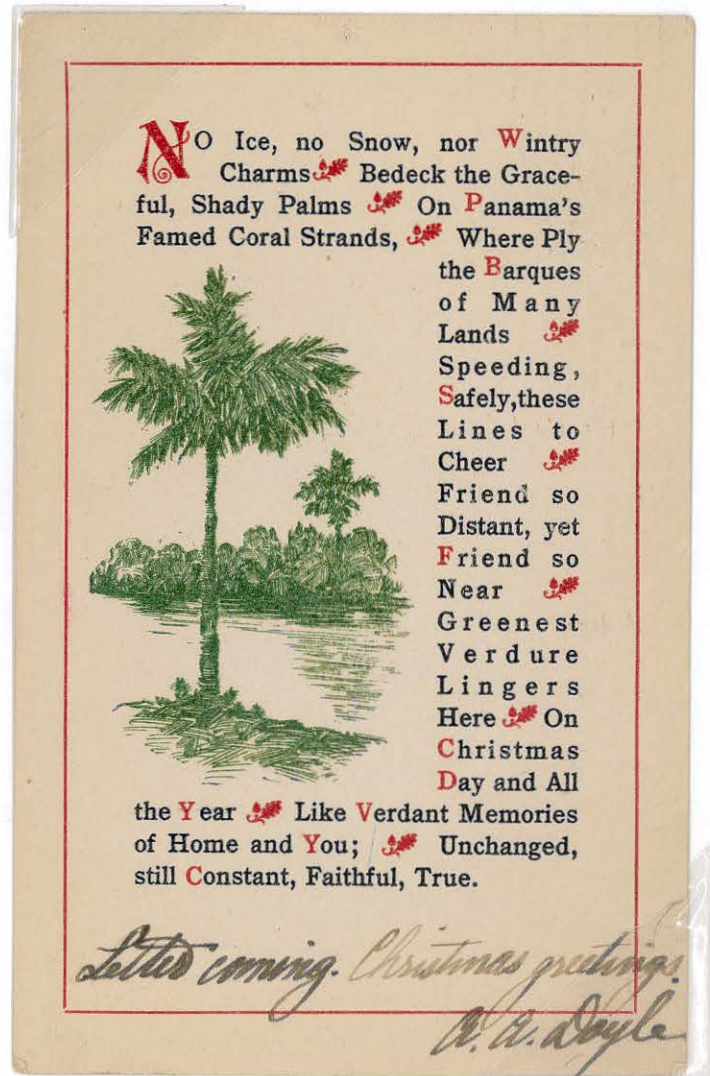
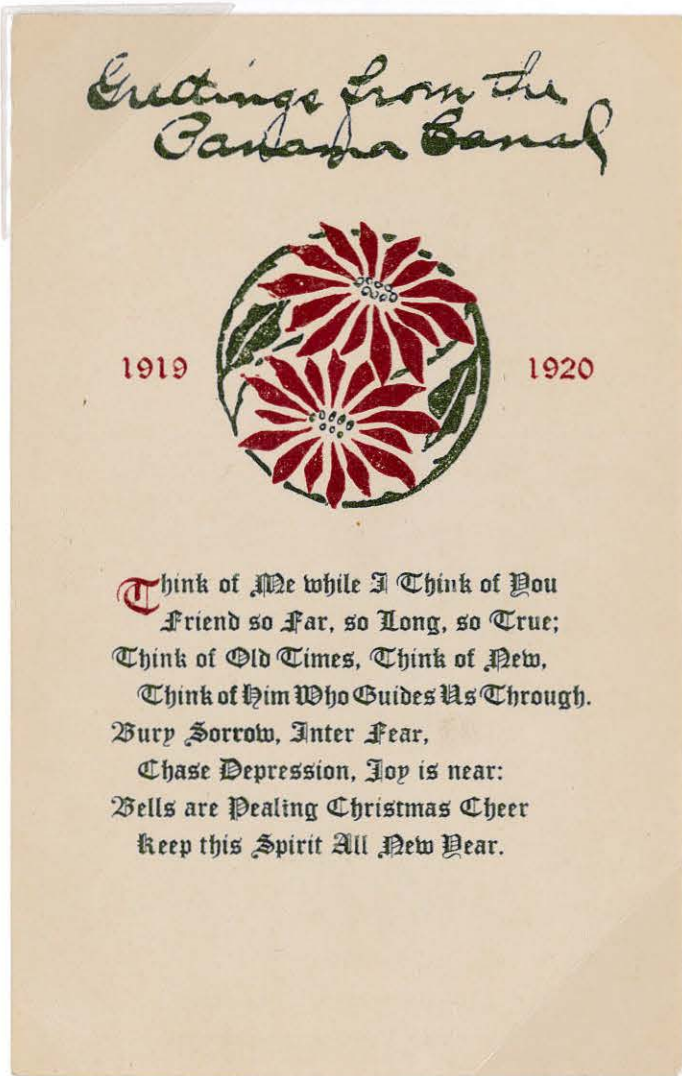
1919

PRINTED ON THIRD ISSUE  
 SECOND PRINTING



1920

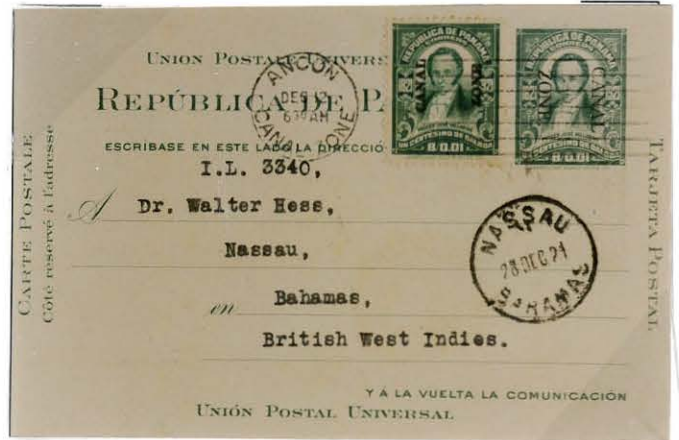
PRINTED ON THIRD ISSUE  
 SECOND PRINTING



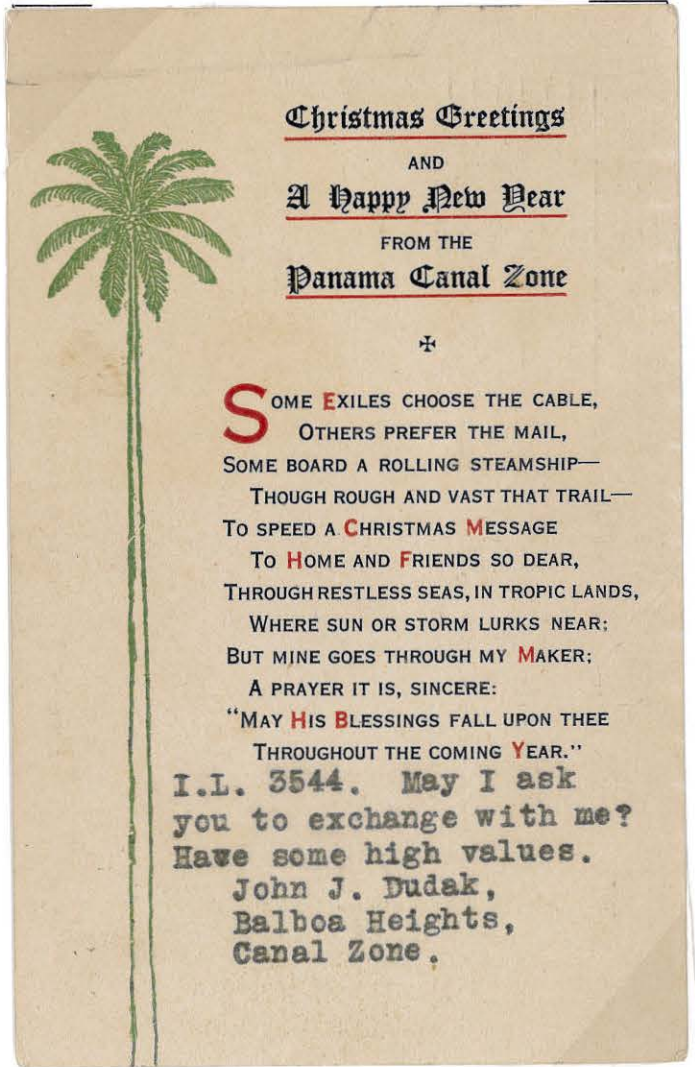
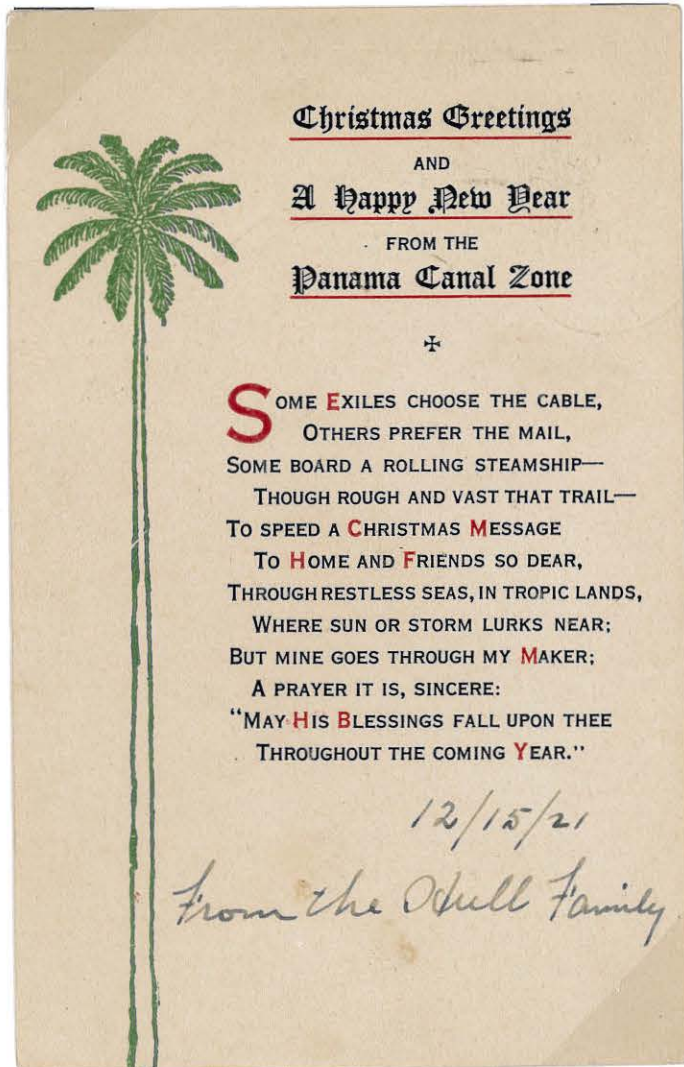
**POSTAL CARDS  
CHRISTMAS GREETINGS  
PRINTED AT MOUNT HOPE, CANAL ZONE**



**1921  
PRINTED ON THIRD ISSUE  
SECOND PRINTING**



**1921  
PRINTED ON FOURTH ISSUE  
THIRD ISSUE, SECOND PRINTING  
ALSO HAD SAME MESSAGE**



**POSTAL CARDS  
CHRISTMAS GREETINGS  
PRINTED AT MOUNT HOPE, CANAL ZONE**

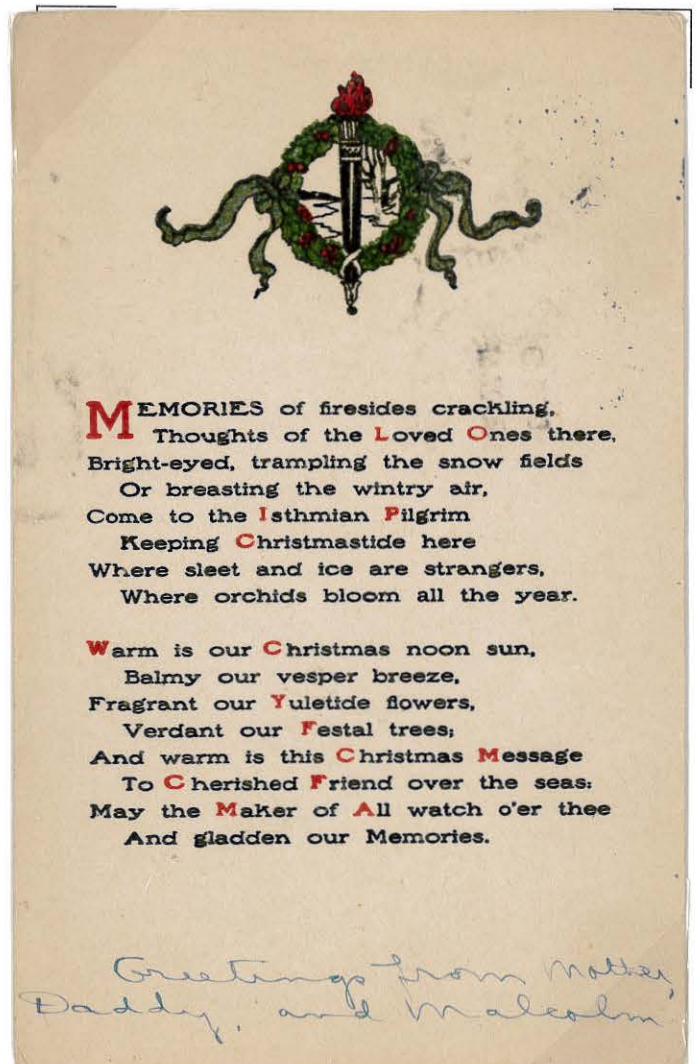
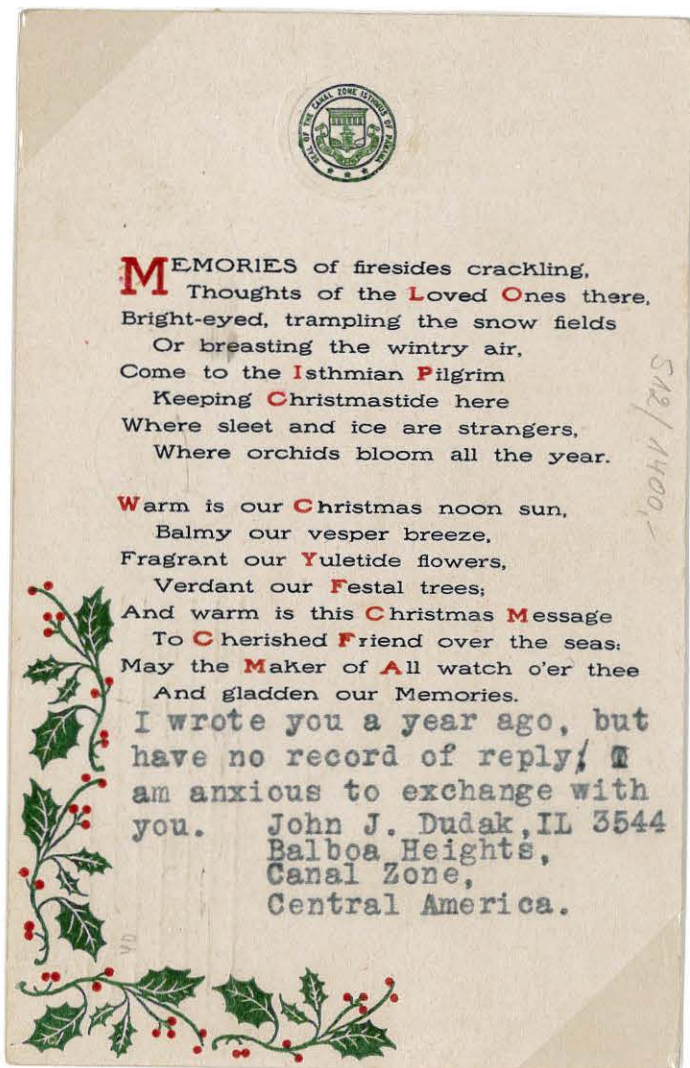
**SOLD OUT AT COMMISARY STORES**

**ADDITIONAL CARDS PRINTED  
WITH SLIGHTLY DIFFERENT DESIGN**



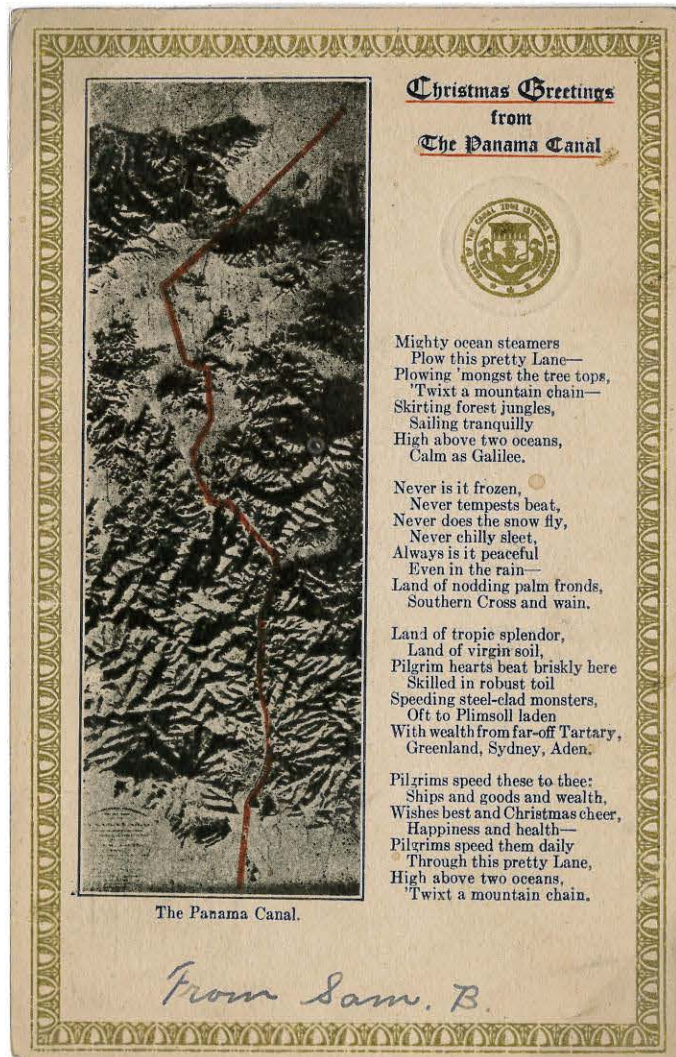
**1922  
PRINTED ON FOURTH ISSUE**

**1922  
PRINTED ON THIRD ISSUE  
SECOND PRINTING**



**POSTAL CARDS**  
**CHRISTMAS GREETINGS**  
**PRINTING AT MOUNT HOPE, CANAL ZONE**  
**1923**

The use of Christmas messages printed on the backs of Canal Zone postal cards continued until 1923 when the Taft Agreement was abrogated and Panama overprinted cards became void. The 1923 card is the last printed and sold at the Commissary stores.



**PRODUCTION FILE**  
**ONE-CENT BALBOA**

In 1908 Panama changed printers from the Hamilton Bank Note Company to the American Bank Note Company. They requested a one-cent stamp similar to the Vasco Nunez de Balboa that Hamilton had issued.



**ARTIST STAMP AND HAND-PAINTING DRAWING  
IN GREEN AND BLACK WITH CHINESE WHITE LETTERING**



**SMALL PLATE PROOFS ON INDIA PAPER**

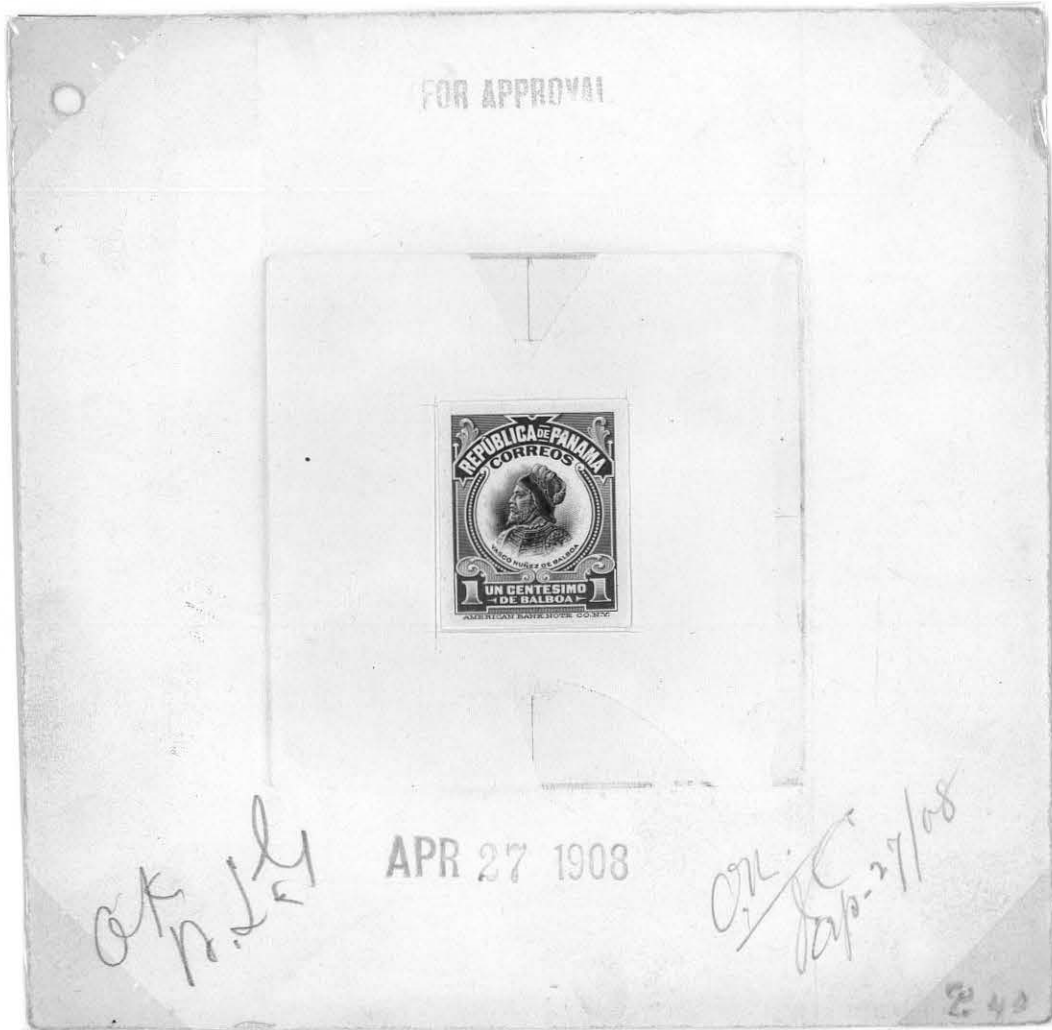


**DIE PROOFS IN ISSUED COLORS**

**PRODUCTION FILE  
ONE-CENT BALBOA**

**THE NEW VASCO NUNEZ DE BALBOA STAMP PRINTED BY THE AMERICAN NOTE COMPANY**

**SMALL APPROVED WORKING DIE PROOF  
APRIL 27, 1908**



**STAMPED ENVELOPES  
FIRST ISSUE - ONE CENT**

Envelopes of Panama lithographed in two colors by the American Bank Note Company. The first order was placed on January 16, 1916. The "Canal Zone" overprint has been added to the vignette die. Cost of the one-cent envelope was two cents for single envelopes, one-tenth cent per envelope for orders over 50.

**FIRST PRINT ORDER F4867    RECEIVED FEBRUARY 23, 1916    50,000 ORDERED**



**LAST PRINT ORDER F6568    RECEIVED OCTOBER 22, 1920    100,000 ORDERED**



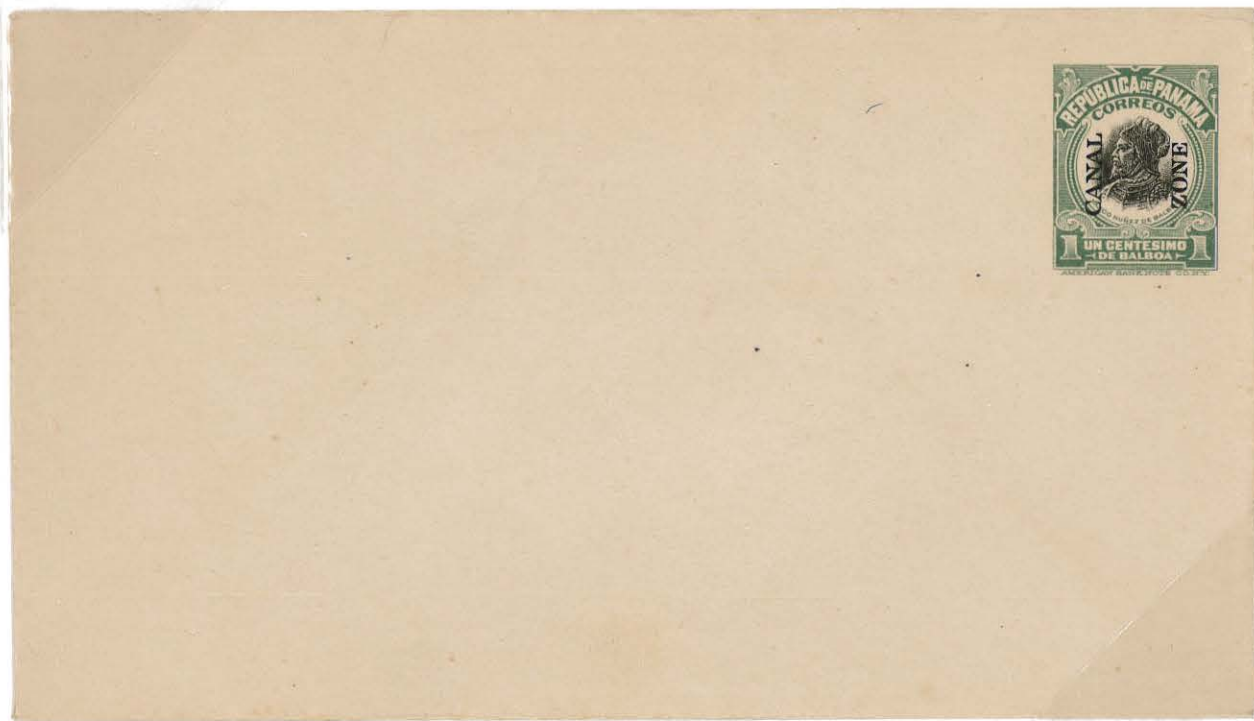


**STAMPED ENVELOPES**

**FIRST ISSUE - ONE CENT**

**APRIL 24, 1916**

**350,000 ISSUED    UNWATERMARKED    NO GUM ON FLAP    GREEN**



Although there were four press runs, it does not appear that more than one set of dies were used.  
Many color varieties can be found.

**GRAY GREEN**



**STAMPED ENVELOPES**

**FIRST ISSUE - TWO CENT**

- **HEAD WITHOUT FRAME FULL IMPRESSION INSIDE**  
**TWO EXAMPLES KNOWN**

**WILLIAM M. WHITE**

**BALBOA, C. Z.**



HENRY A WESTENDORFF,  
BALBOA, C. Z.



**STAMPED ENVELOPES**

**FIRST ISSUE - TWO CENT**

- **DOUBLE IMPRESSION ON BACK NO IMPRESSION ON FRONT**  
**ONLY KNOWN EXAMPLE**



**MISCUT ENVELOPE**



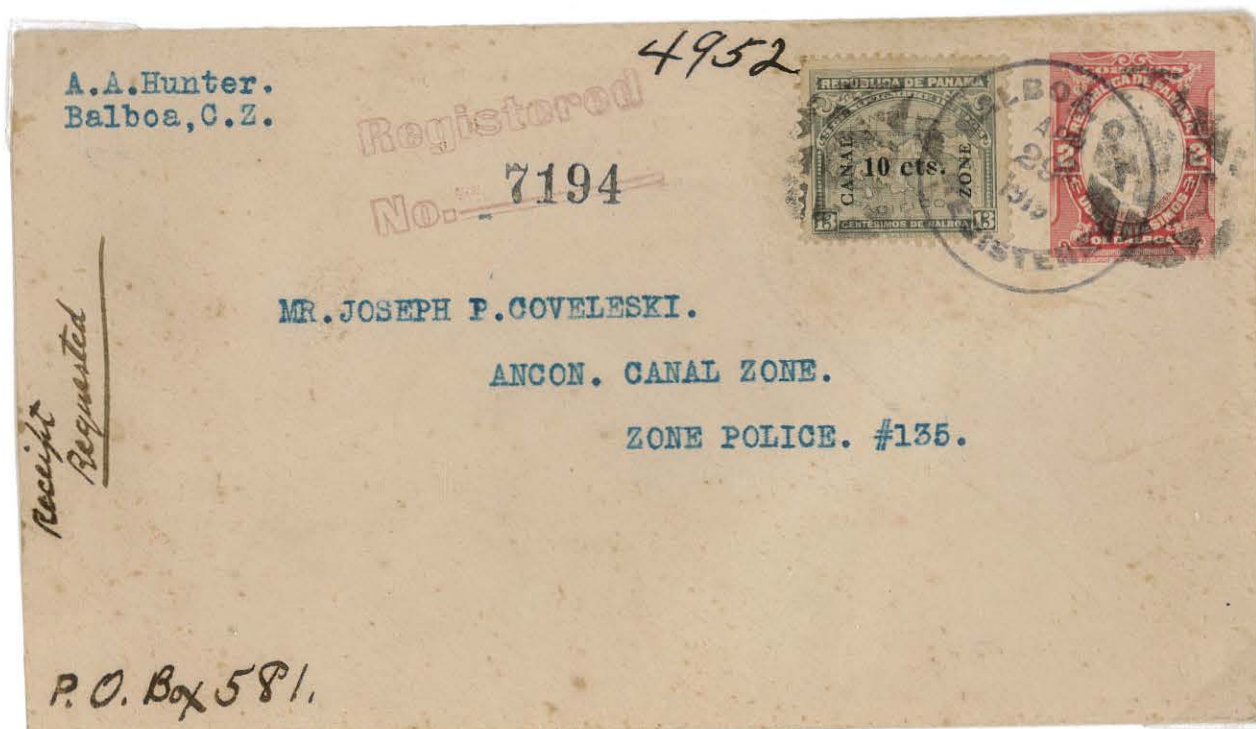
STAMPED ENVELOPES

FIRST ISSUE - TWO CENT

• FRAME ONLY

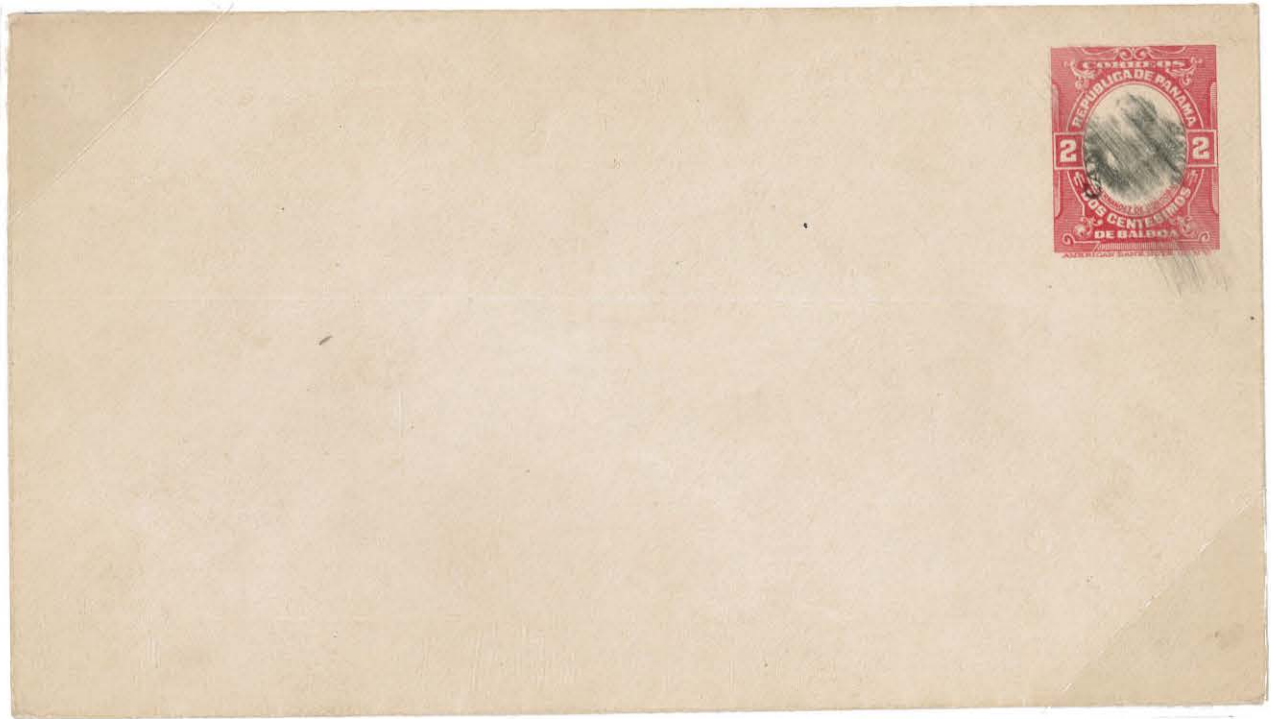


• TWO REPORTED EXAMPLES OF USED COPIES

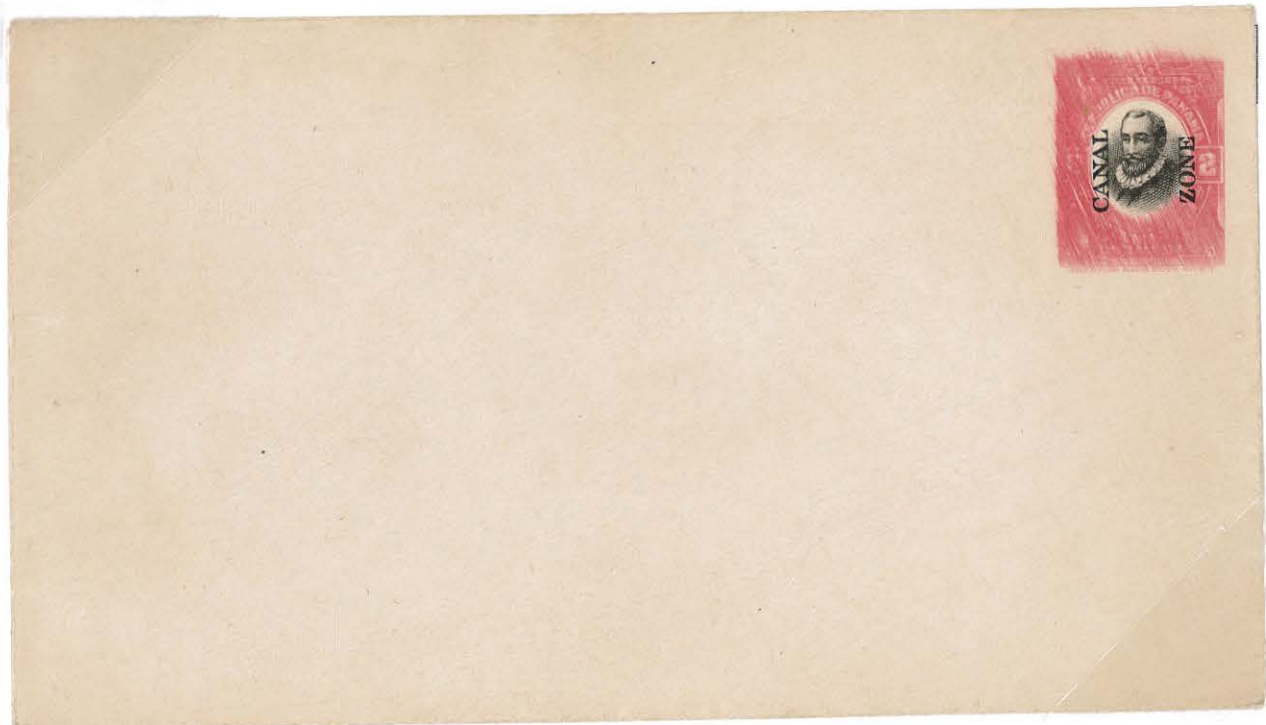


**STAMPED ENVELOPES  
FIRST ISSUE - TWO CENT**

**SMEARED HEAD AND "CANAL ZONE"**



**SMEARED FRAME**

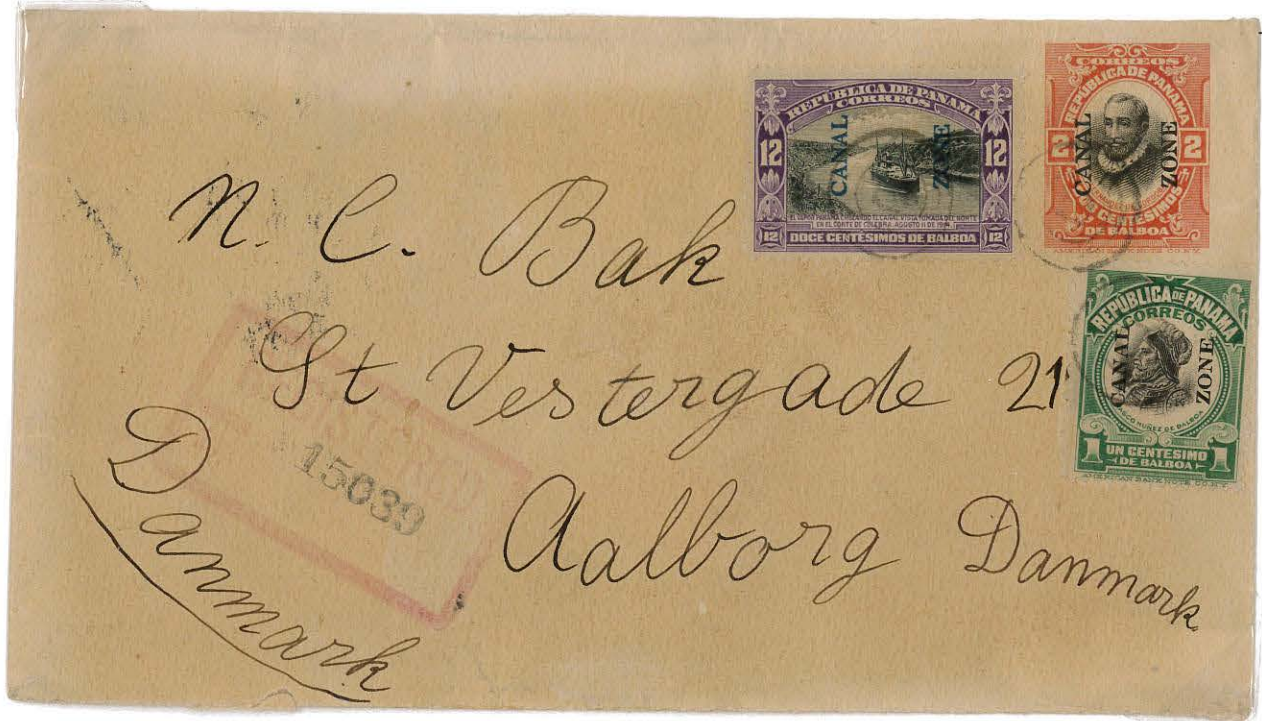


**STAMPED ENVELOPES**

**FIRST ISSUE - TWO CENT**

**FOREIGN DESTINATIONS**

**DESTINATION: DENMARK    RATE: TEN-CENT REGISTRATION PLUS FIVE-CENT UPU RATE  
REGISTRATION FEE INCLUDED INSURANCE**



**DESTINATION: AUSTRALIA    RATE: FIVE CENTS**



**STAMPED ENVELOPES  
FIRST ISSUE - TWO CENT  
ABROGATION OF THE TAFT AGREEMENT**

The U.S. abrogated the Taft Agreement effective June 30, 1924. During July and August 1924, Panama overprints, as well as the new Canal Zone stamps and postal stationery, were valid.

**POSTMARKED: BALBOA C.Z. JULY 6 1924**  
Addressed to Governor Harding, Governor of the Canal Zone.



Exception to the August ruling involved envelopes and postal cards which were valid indefinitely if the purchaser added a printed inscription.

**POSTMARKED: ANCON CANAL ZONE JAN 20 1925**

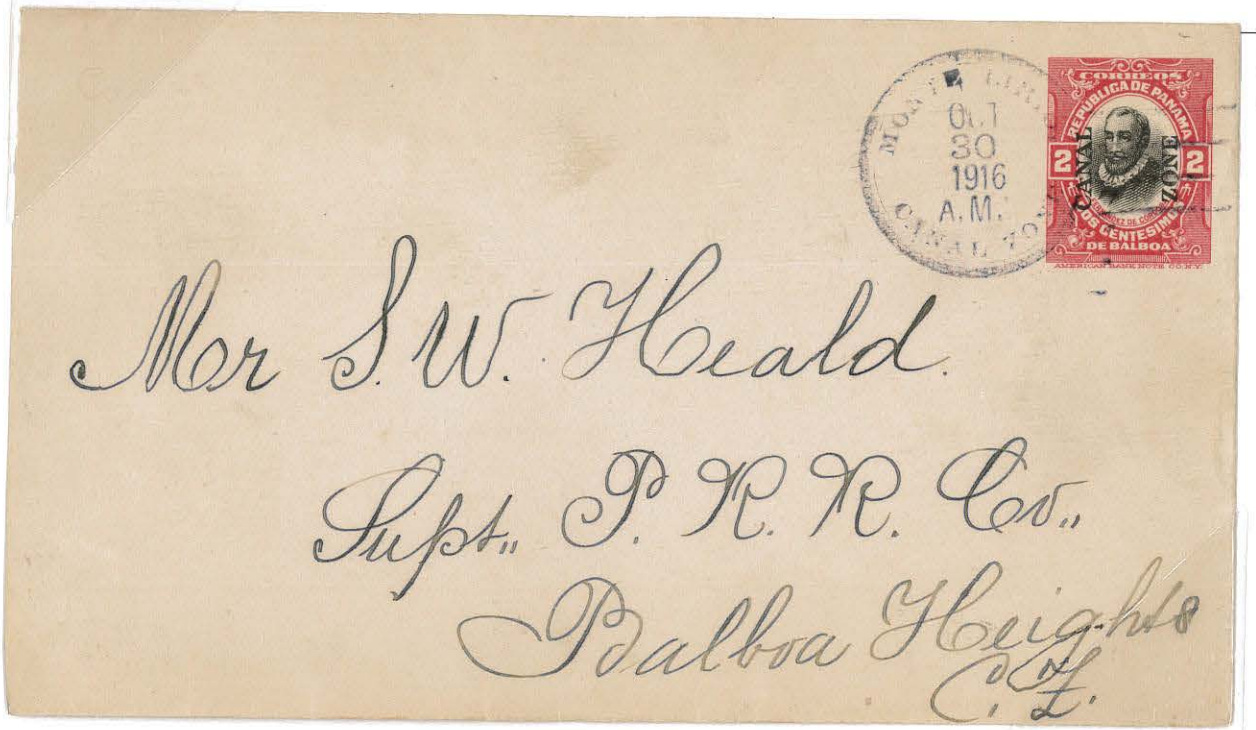


**STAMPED ENVELOPES**

**FIRST ISSUE - TWO CENT**

**MONTE LIRIO**

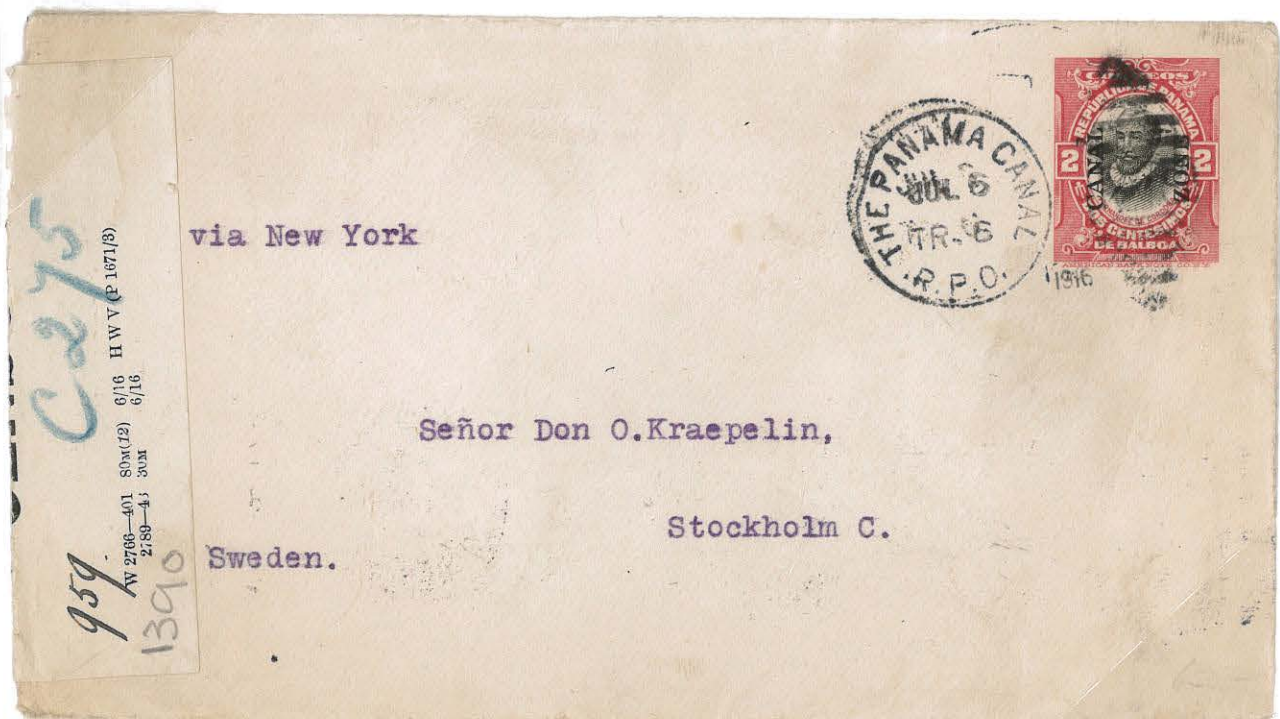
Only known stamped envelope from this post office. Monte Lirio cancellations are among the rarest of all Canal Zone offices. Stamp sales for the last ten months of operation only totaled \$95.



**RAILWAY POST OFFICE TRAIN NUMBER 6**

**DESTINATION: STOCKHOLM, SWEDEN**

**WORLD WAR I CENSOR**





**STAMPED ENVELOPES**

**FIRST ISSUE - TWO CENT**

**FIRST DISPATCH AIR SERVICE, CANAL ZONE TO U.S.    OCTOBER 6, 1920**

Mail was received at several Canal Zone post offices for this historic flight. Mail was then sent to Cristobal where the special transit handstamp was applied. Nearing Jamaica, bad weather caused the plane to return to Cristobal where the informational marking was applied and the mail was redispached by steamer.

**POSTMARKED: CRISTOBAL CANAL ZONE**



**POSTMARKED: BALBOA HEIGHTS C.Z.**



## WAR TAX SURCHARGES

### • STAMPED ENVELOPES - FIRST ISSUE

An act of Congress passed on October 3, 1917 provided for a one-cent war tax on first class mail. The Canal Zone authorities had proofs made for approval before issuing. The tax was subsequently deemed to be an excise tax that did not apply to the Canal Zone and the plan was dropped. These are the only examples known.



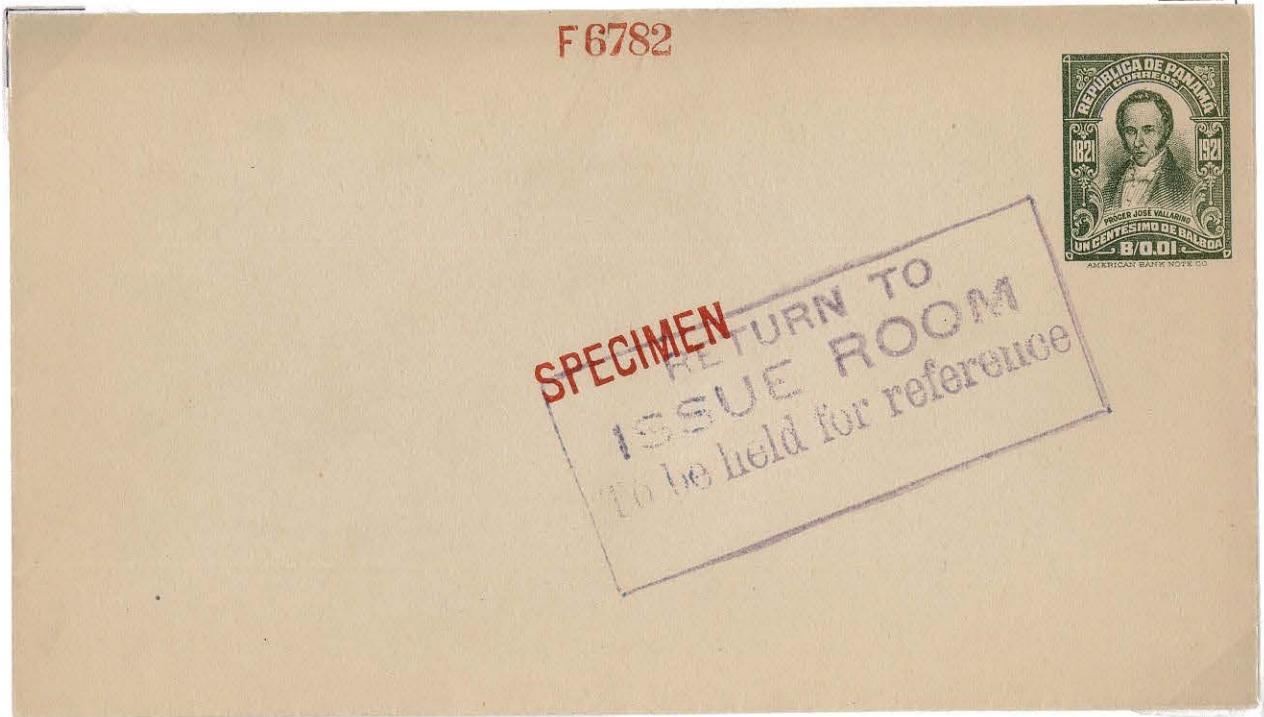
**STAMPED ENVELOPES**

**SECOND ISSUE - ONE CENT**

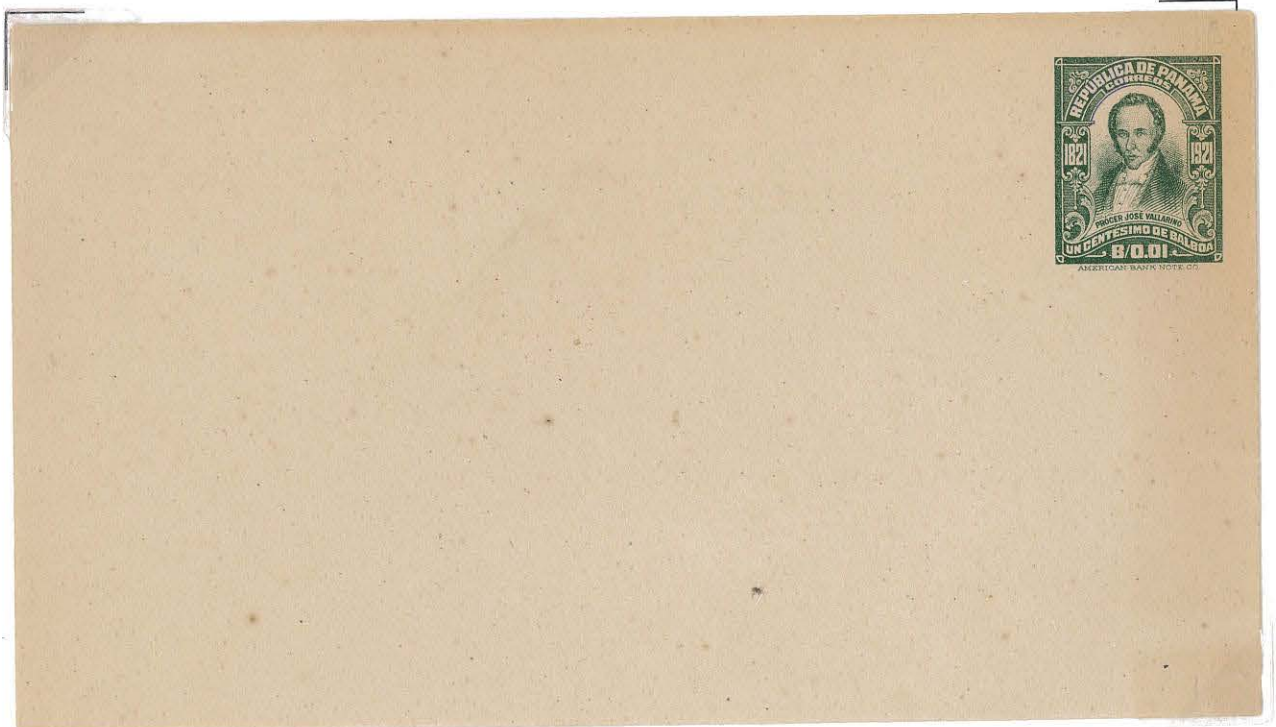
**PANAMA PRINT ORDER 6782**

**NOVEMBER 13, 1921**

**UNWATERMARKED ON WHITE PAPER - NO GUM ON FLAP**

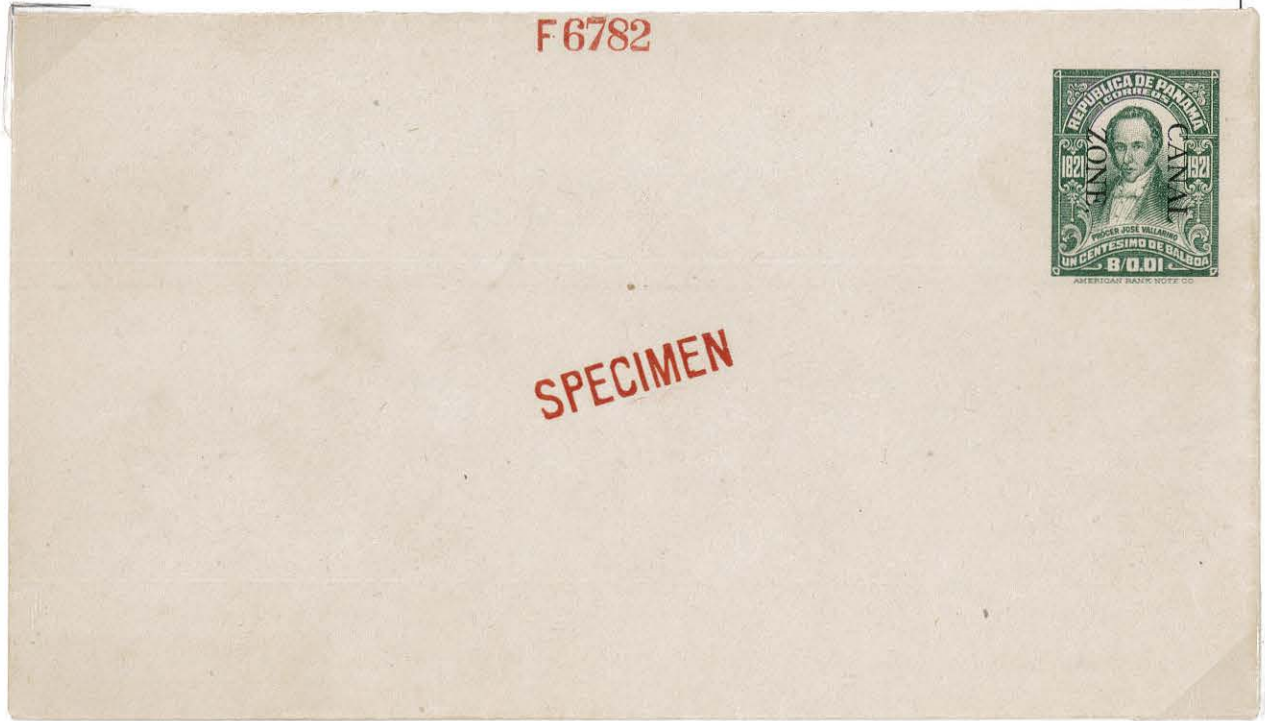


**PANAMA POSTAL ENVELOPE**



**STAMPED ENVELOPES  
SECOND ISSUE - ONE CENT**

- **UNIQUE CANAL ZONE SPECIMEN RECENTLY DISCOVERED FROM THE  
AMERICAN BANK NOTE COMPANY ARCHIVES**



**"CANAL ZONE" OVERPRINTED IN BLACK BY THE AMERICAN BANK NOTE COMPANY**  
50,000 were delivered in August 1921; 20,681 were issued; the balance were burned in 1937.



STAMPED ENVELOPES

SECOND ISSUE - ONE CENT

POSTAL RATES

DESTINATION: CANAL ZONE RATE: ONE CENT  
ADDRESSED TO: JAY J MORROW, GOVERNOR, CANAL ZONE

METAL TRADES COUNCIL  
Box 242, Balboa Heights



1922

JUL 24 1922 10 55 AM

Col. Jay J Morrow

Governor Panama Canal

Balboa Heights

DESTINATION: U.S. RATE: TWO CENTS

*Col. Kammermayer  
Fort Sherman  
Panama Canal*



MR.

J.C. MATTHEWS

1034 ADAMS ST.,

OLYMPIA. WASH.

F 6782

**SPECIMEN**



B/O.02

COPY

Panama, Repu

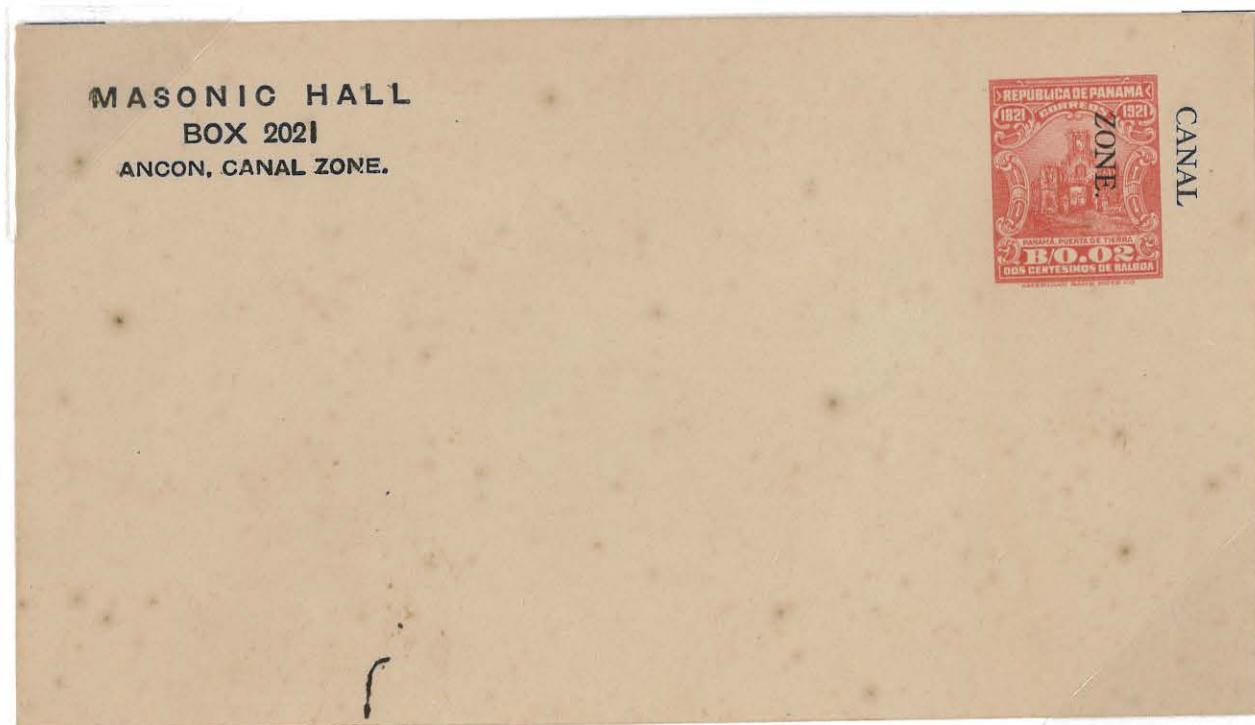
Use Steel die made on F 6765 with surcharge "Canal Zone"  
For record see F 6765.  
Color-Red.

**STAMPED ENVELOPES  
SECOND ISSUE - TWO CENT**

- "CANAL ZONE" ONLY  
BELIEVED TO BE UNIQUE



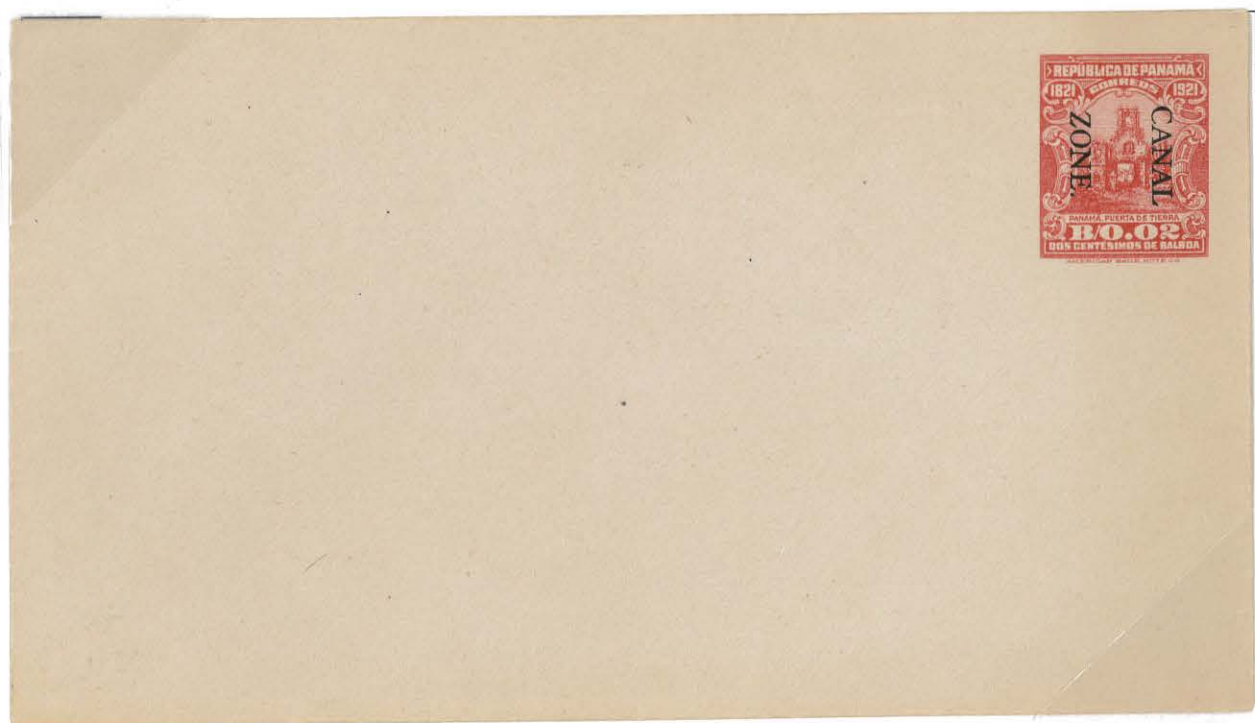
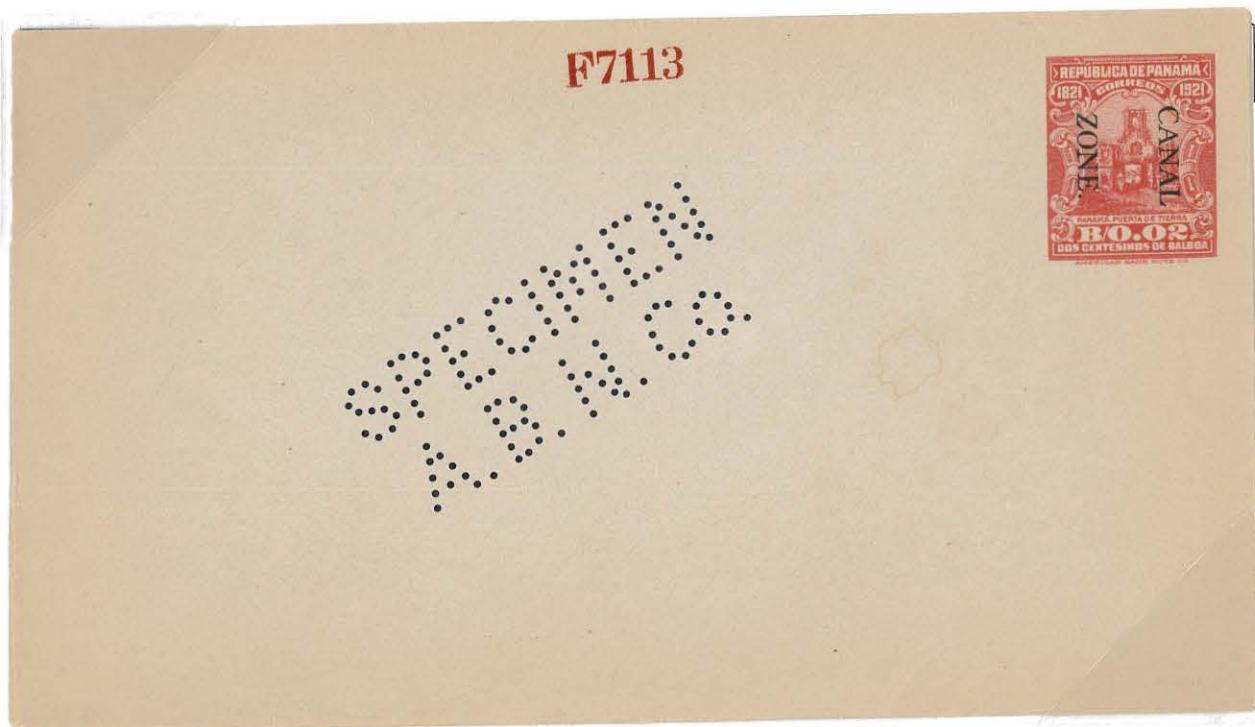
**SHIFTED OVERPRINT**



**STAMPED ENVELOPES**  
**SECOND ISSUE - TWO CENT**

100,000 were delivered in August 1921. The balance of 200,000 were delivered October 10, 1922.  
None were destroyed in 1937.

**PRINT ORDER F7113**





**STAMPED ENVELOPES  
SECOND ISSUE - TWO CENT  
RAILWAY MAIL SERVICE  
R. P. O.**

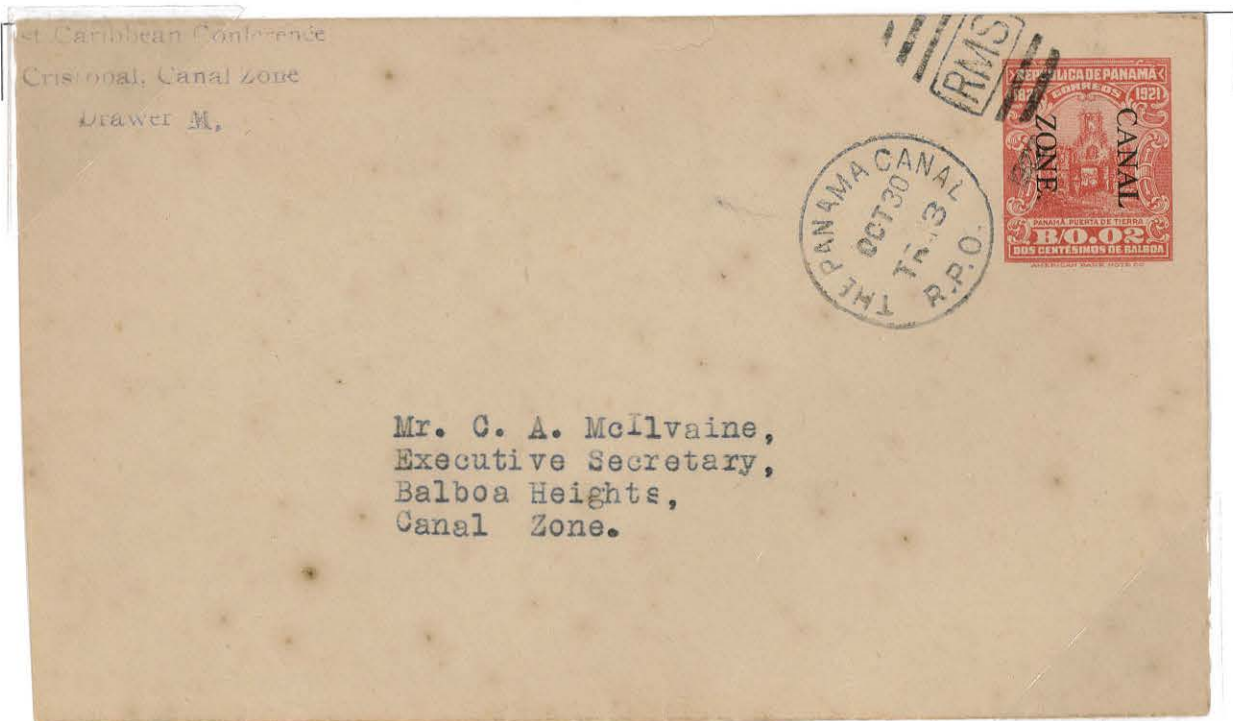
Even numbered trains traveled north from Ancon to Cristobal.

**POSTMARKED: THE PANAMA CANAL TR. 4 NOV 22 1921  
AN EARLY CANCELLATION**



Odd numbered trains traveled south from Cristobal to Ancon.

**POSTMARKED: THE PANAMA CANAL TR. 3 OCT 30 1922**



**STAMPED ENVELOPES**  
**FIRST ISSUE - ONE CENT**

- **HEAD AND "CANAL ZONE" ONLY**

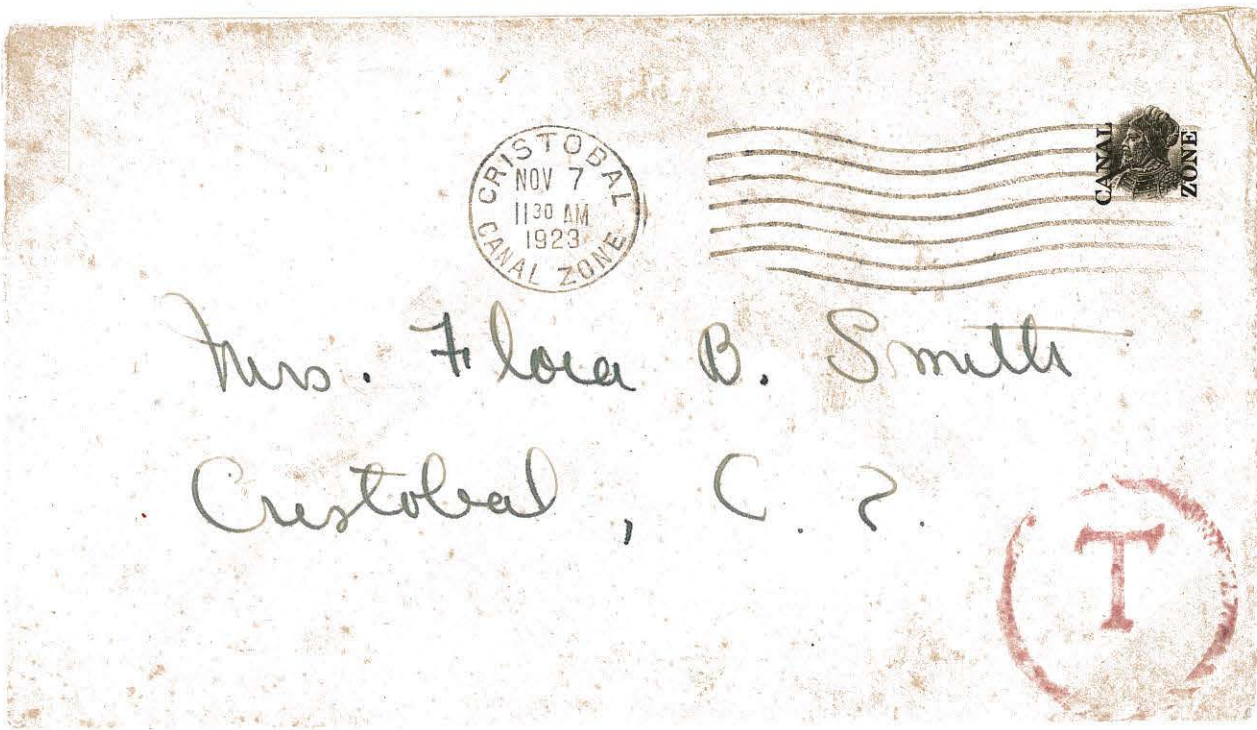
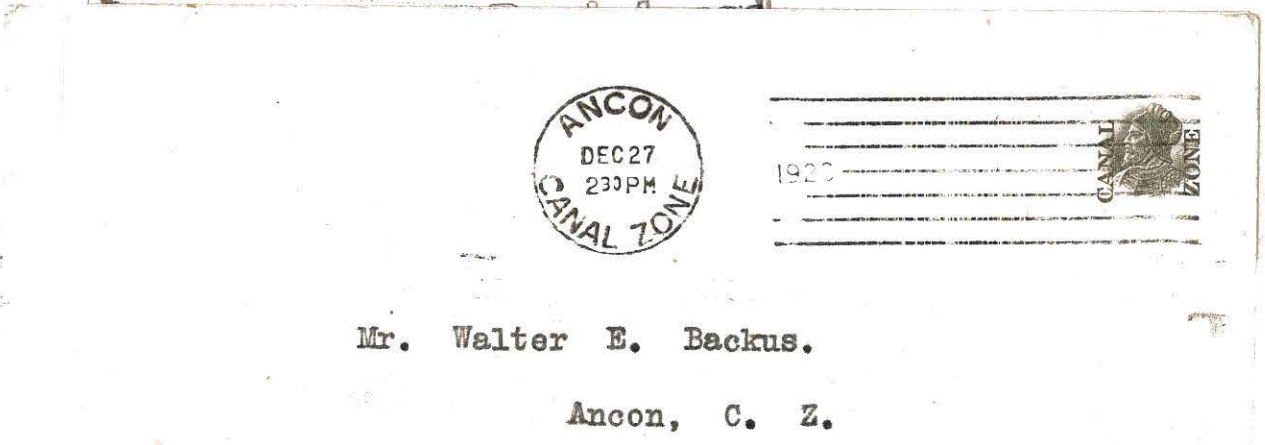


- **FRAME ONLY**



STAMPED ENVELOPES  
FIRST ISSUE - ONE CENT

• HEAD AND "CANAL ZONE" ONLY



**STAMPED ENVELOPES**

**FIRST ISSUE - ONE CENT**

**FRAME PARTIALLY PRINTED**



**LIGHT  
IMPRESSION**



**MISCUT ENVELOPES**

**STAMPED ENVELOPES**

**FIRST ISSUE - ONE CENT**

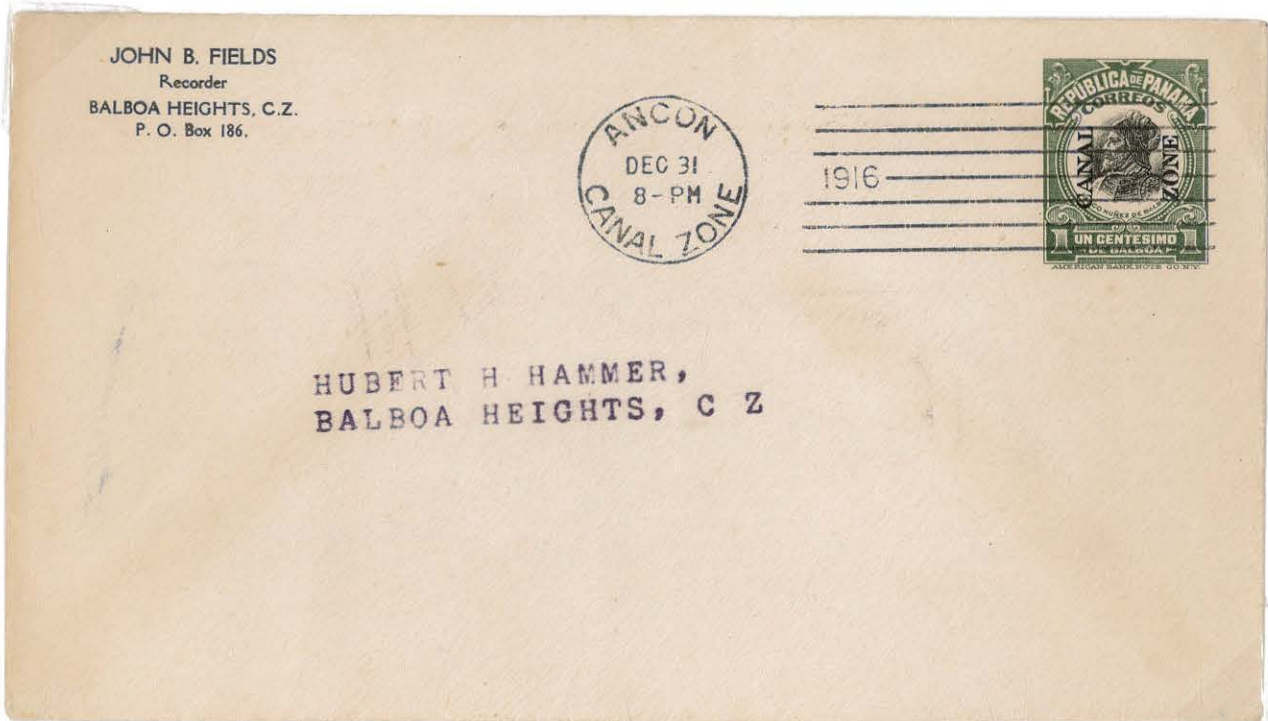
**MILITARY CENSORED MAIL, WORLD WAR I**

Censorship became operative for all U.S. troops in the Canal Zone on July 1, 1918.

PCD are initials for Panama Canal Department.



**DESTINATION: CANAL ZONE    RATE: ONE CENT  
DROP LETTER RATE**



STAMPED ENVELOPES

FIRST ISSUE - ONE CENT

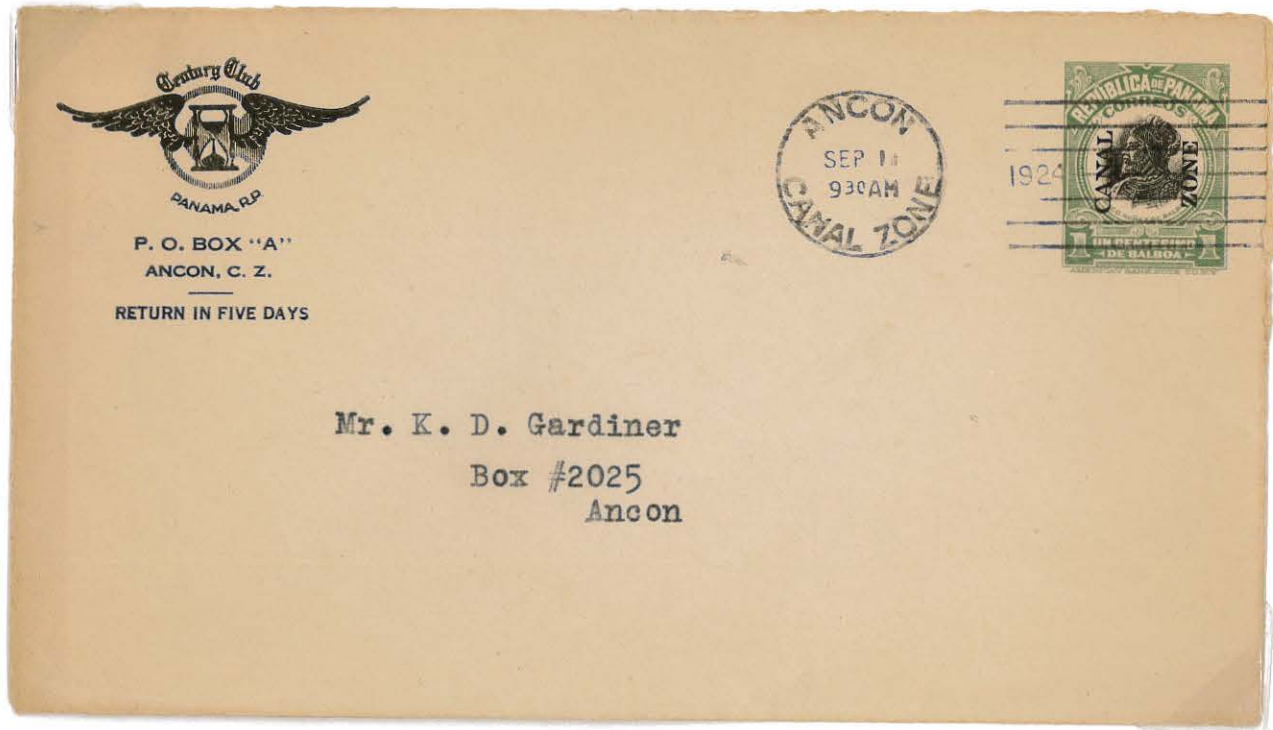
FOREIGN USAGE: REGISTERED RATE: FIFTEEN CENTS  
FIVE-CENT UPS RATE TO EUROPE PLUS TEN-CENT REGISTRATION FEE



**STAMPED ENVELOPES  
FIRST ISSUE - ONE CENT  
ABROGATION OF TAFT AGREEMENT**

The use of most Canal Zone stationery overprinted on Panama stationery ceased on September 1, 1924. Several mailers complained and finally envelopes were valid indefinitely if they had preprinted corner cards.

**POSTMARKED: ANCON CANAL ZONE SEP 1 1924**



**POSTMARKED: GATUN C.Z. NOV 22 1924**



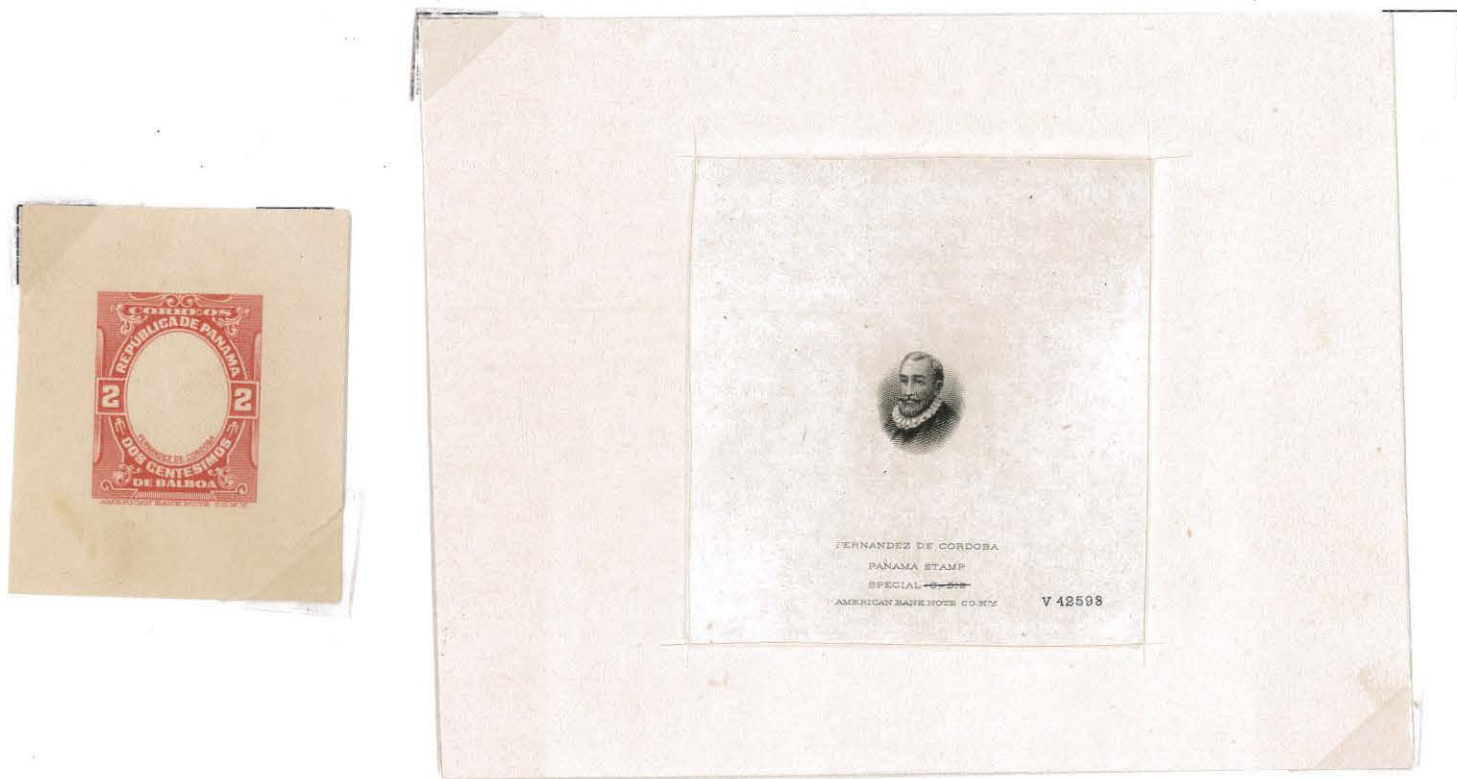
**CANAL ZONE**  
**FIRST TWO-CENT STAMPED ENVELOPE**

The Republic of Panama issued a two-cent envelope in 1909. The design depicted Fernandez de Cordoba and was lithographed by the American Bank Note Company. Since by treaty the Republic received 40% of the face value of all stamps and postal stationery sold in the Canal Zone, the Panama authorities were anxious to approve the issuance of stamped envelopes.

After approval in 1916, the words "Canal Zone" were added to the vignette die by the American Bank Note Company. The envelopes were unwatermarked on white paper without gum. Two press runs were required, one for each color. Envelopes were first issued on April 24, 1916. Fourteen separate printings were made consisting of 1,512,000 envelopes; none were destroyed.

The exhibit covers essays of the Panama envelope and all known Canal Zone specimens. All known errors and varieties of the two-cent Cordoba envelope are represented as well as some unusual usages.

**DIE ESSAYS OF FRAME AND VIGNETTE IN ISSUED COLORS**



**CORDOBA VIGNETTE DIES IN UNISSUED COLORS**





**STAMPED ENVELOPES**

**FIRST ISSUE - TWO CENT**

**UNWATERMARKED ON WHITE PAPER WITHOUT GUM TOTAL ISSUE 1,512,000**

**14 SEPARATE PRINTING ORDERS PLACED WITH AMERICAN BANK NOTE COMPANY**

**INITIAL PRINT ORDER F4867 FEBRUARY 23, 1916 50,000 ORDERED INDEX CARD SHOWS**

**SAMPLE ENVELOPE**

Panama, Republic of

Envelope

F 4867

2/23/16

2¢

INDEX COPY

C 1816

F4867



SPECIMEN

Use steel die engraved on F 1518  
with surcharge "Canal Zone"

For record see F 1518

Color center-black, border S031 Sub.  
Litho print.

**STAMPED ENVELOPES**

**FIRST ISSUE - TWO CENT**

**NEWLY-DISCOVERED SPECIMENS FROM THE AMERICAN BANK NOTE COMPANY ARCHIVES**

Each printing used slightly different colors and types of paper.

F4966 ✓



SPECIMEN

F5310 ✓



F5447 ✓



F 5658 ✓



SPECIMEN

STAMPED ENVELOPES  
FIRST ISSUE - TWO CENT  
SPECIMENS FROM THE AMERICAN BANK NOTE COMPANY ARCHIVES

F5822 ✓



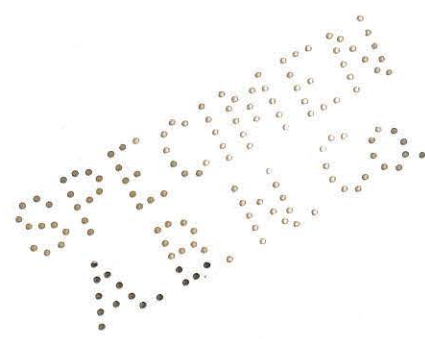
F6236



F6568



F7290



**STAMPED ENVELOPES**

**FIRST ISSUE - TWO CENT**

Many shades of red and carmine can be found. Earliest printing are red; later printings are carmine.

**RED**

**CARMINE**



**EARLIEST REPORTED DATE: CARMINE**

**POSTMARKED: ANCON C.Z. MAY 13, 1916**



*Amicilla Publ. Co.,  
Broad St.  
Barton  
Mass*

**STAMPED ENVELOPES**

**FIRST ISSUE - TWO CENT**

**MISPLACED FRAMES**

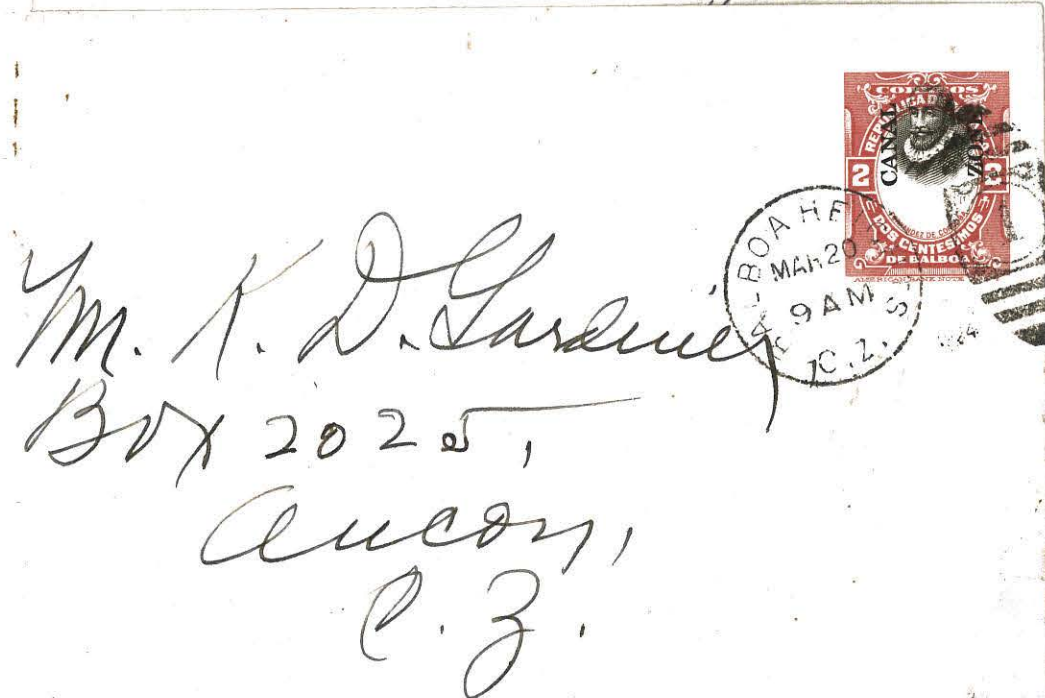
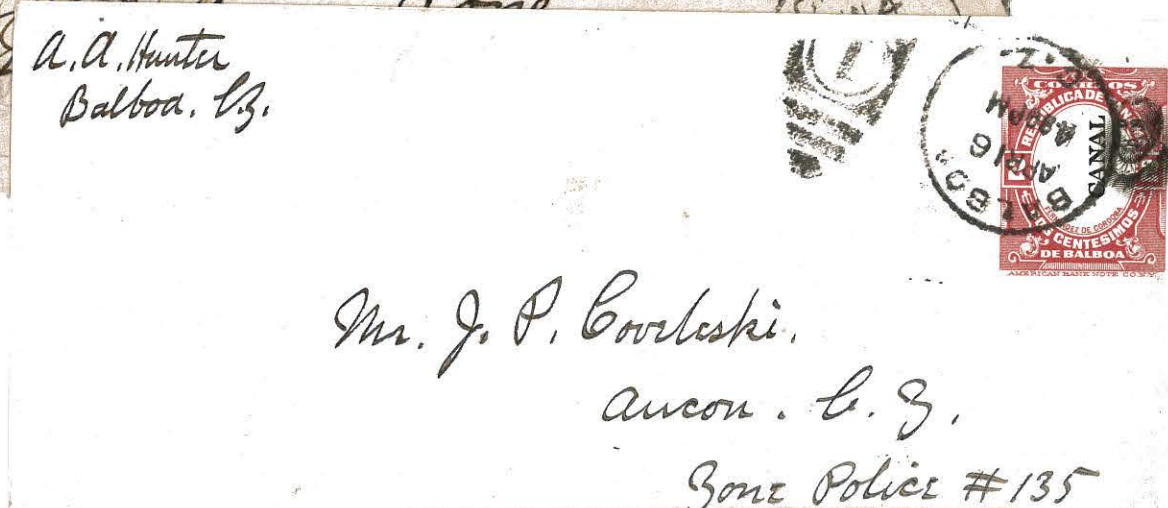
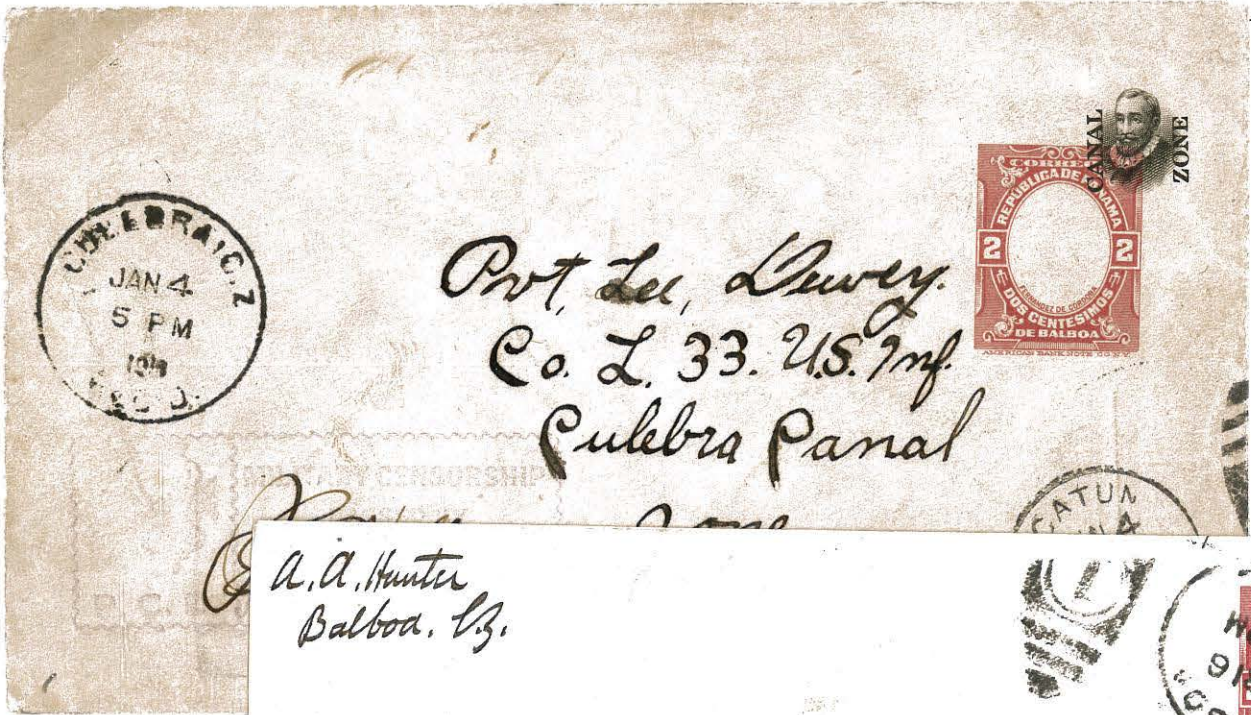
Printed in two press runs, first the frame, then the head and "Canal Zone."



STAMPED ENVELOPES

FIRST ISSUE - TWO CENT

MISPLACED FRAMES



**STAMPED ENVELOPES**

**FIRST ISSUE - TWO CENT**

**MISPLACED HEADS**



**"ZONE" ON BACK OF ENVELOPE**

STAMPED ENVELOPES

FIRST ISSUE - TWO CENT

• HEAD AND "CANAL ZONE" ONLY  
USED COPIES ARE MORE SCARCE



Mr. C. F. Evans,

From  
E. A. R. Helms  
Culebra, C. Z.



4154



Mr. J. P. Coveleski.

Ancon, C. Z.

Registered

No. 1519

P.O. Box. #581.

RECEIPT  
REQUESTED

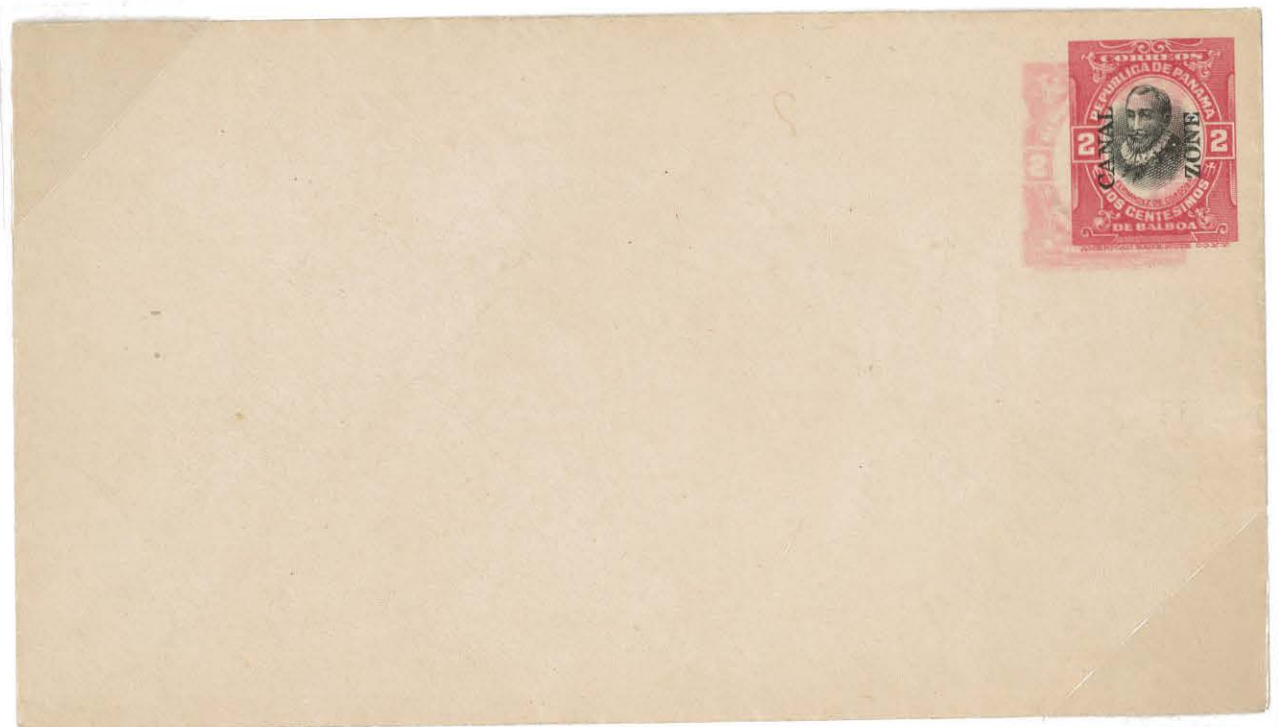


**STAMPED ENVELOPES**

**FIRST ISSUE - TWO CENT**

• **FRAME DOUBLE**

**THREE EXAMPLES KNOWN**





## CANAL ZONE COAT OF ARMS ISSUE 1923

In October 1923, the Republic of Panama placed an order with the American Bank Note Company for one-cent and two-cent envelopes and a one-cent postal card. The design was to be the Coat of Arms of the Republic. The envelopes were to be on good quality white paper, embossed with the Coat of Arms of Panama, lithographed and without gum.

Engraving was contracted to the Charles Magenfohr Company of New York City. In 1923 Canal Zone authorities ordered 150,000 one-cent and 250,000 two-cent envelopes and 150,000 one-cent postal cards with the Canal Zone overprint. The Canal Zone envelope order was assigned number F7429 and the one-cent postal card was assigned number F7430.

In 1937 all 150,000 of the one-cent envelopes were incinerated at the Canal Zone Press. The only exception was the index card and the one-cent specimen from the American Bank Note Company archives; it is included in this exhibit. It is estimated that not more than 60,000 of the one-cent postal cards were sold. The two-cent envelope quantity sold was 46,041; the balance was destroyed. The postal card is the only embossed postal card ever issued by the United States.

The exhibit covers the complete production file and development of the Panama Coat of Arms issue which had "Canal Zone" added to the design. Included are the original pen and ink drawing, proofs, specimens and various usages.

### ORIGINAL PEN & INK DRAWING FROM THE ARCHIVES OF THE AMERICAN BANK NOTE COMPANY



Date Oct 19/23

Title Rep of Panama

Embossing Stamps

Text (sample envelope) & small ink drawing  
Ret'd to Mr Lane  
Nov 27/23

Models ✓ model of 1 & 2. stamps die

Model Schedule yes

Plate Schedule no

Order Sheets yes to Eng Oct 23/23

**Missing Articles**

~~model loaned from Licko & put wording "Canal Zone"~~  
~~sample envelope to Mr Dymak Oct 21~~      ~~sample~~  
~~model to Eng Oct 22~~      { ~~to being Eng by Hagenfokh~~  
~~sample envelope to Mr Clark~~      ~~Photo & die, Rec'd from~~  
~~Nov 22~~      ~~model to Mr. Croston~~  
Original die & sample envelope  
& model for Eng in Picture  
Room Oct 25/23

~~of one belonging to Mr. Croston 10~~

Order No. F7429-30

3 Imps 10  
canal zone  
1-20 July 2d  
Stamp  
1 Imp 2d  
canal zone

Photo of c/a modeled up,

3 Imps of Coat of Arms, 1 letter from Wagners,

sent to Mr Dymock Dec 3. Ret'd to Mr Fairis Dec 4/23

sent to Mr [unclear] 9/23

~~material sent to Mr [unclear]~~

material sent Oct 26. } model [unclear] Oct 30

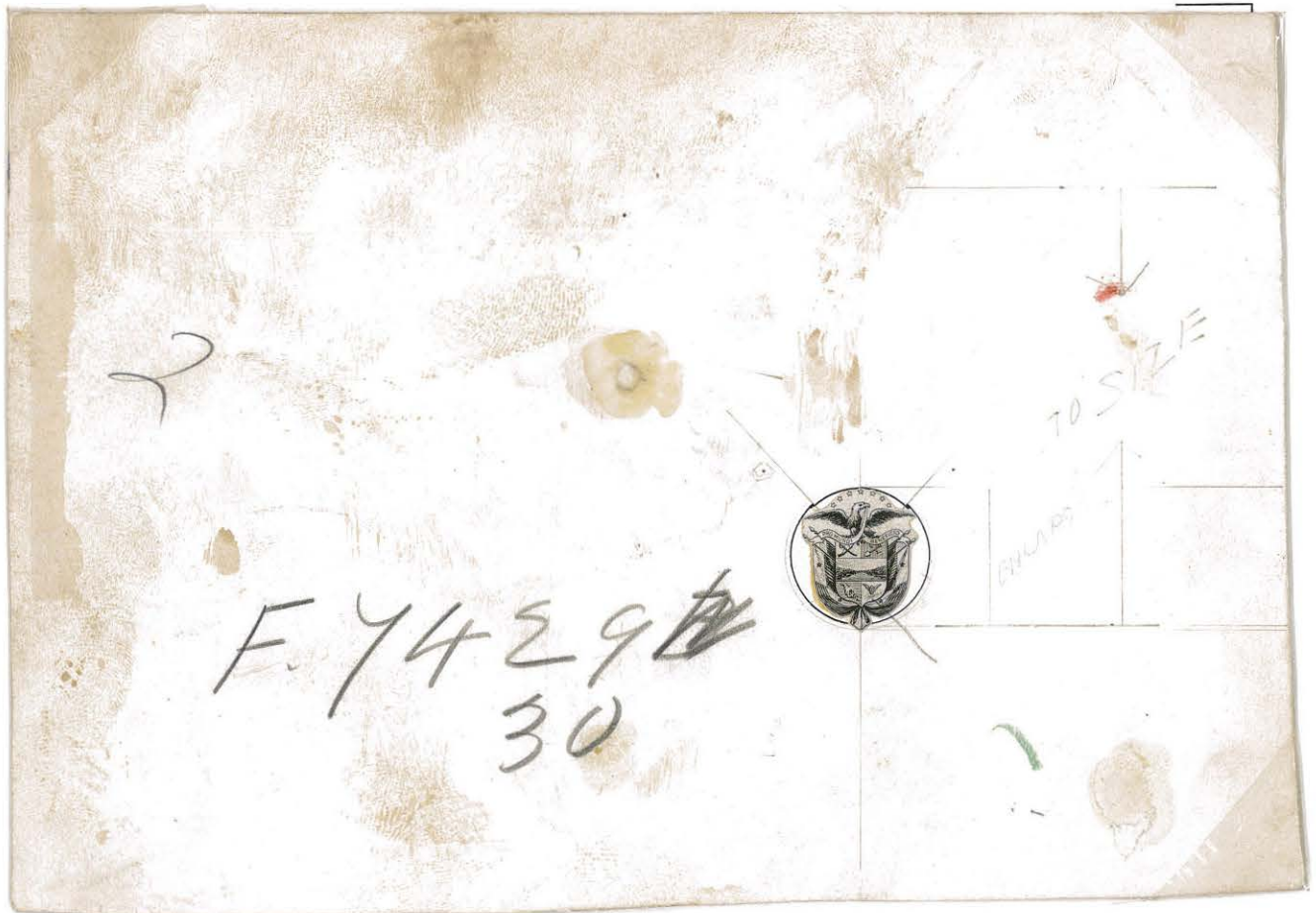
Wagners Nov 9/23. } model & specimen [unclear] Nov 8

in Nov. 20. Rev Dec 6

~~Zone [unclear] [unclear]~~

**PRODUCTION FILE  
COAT OF ARMS**

**ELECTRO MODEL OF COAT OF ARMS TO ACTUAL SIZE**



**TRIAL IMPRESSIONS OF EMBOSSED COAT OF ARMS ON CARDBOARD**



**PRODUCTION FILE**

**COAT OF ARMS**

**FIRST MODELS**

**MODELS OF THE ONE-CENT AND TWO-CENT PANAMA STAMP DIES WITH CORRECTIONS  
CORRECTIONS COVER RE-ENGRAVING OF COAT OF ARMS AS WELL AS FURTHER INSTRUCTIONS**

Reengrave coat of arms to be  
embossed without color

Rest is O.K. H.J.B.

10.17.43

all lettering to be embossed



=7429-30

*Design approved*

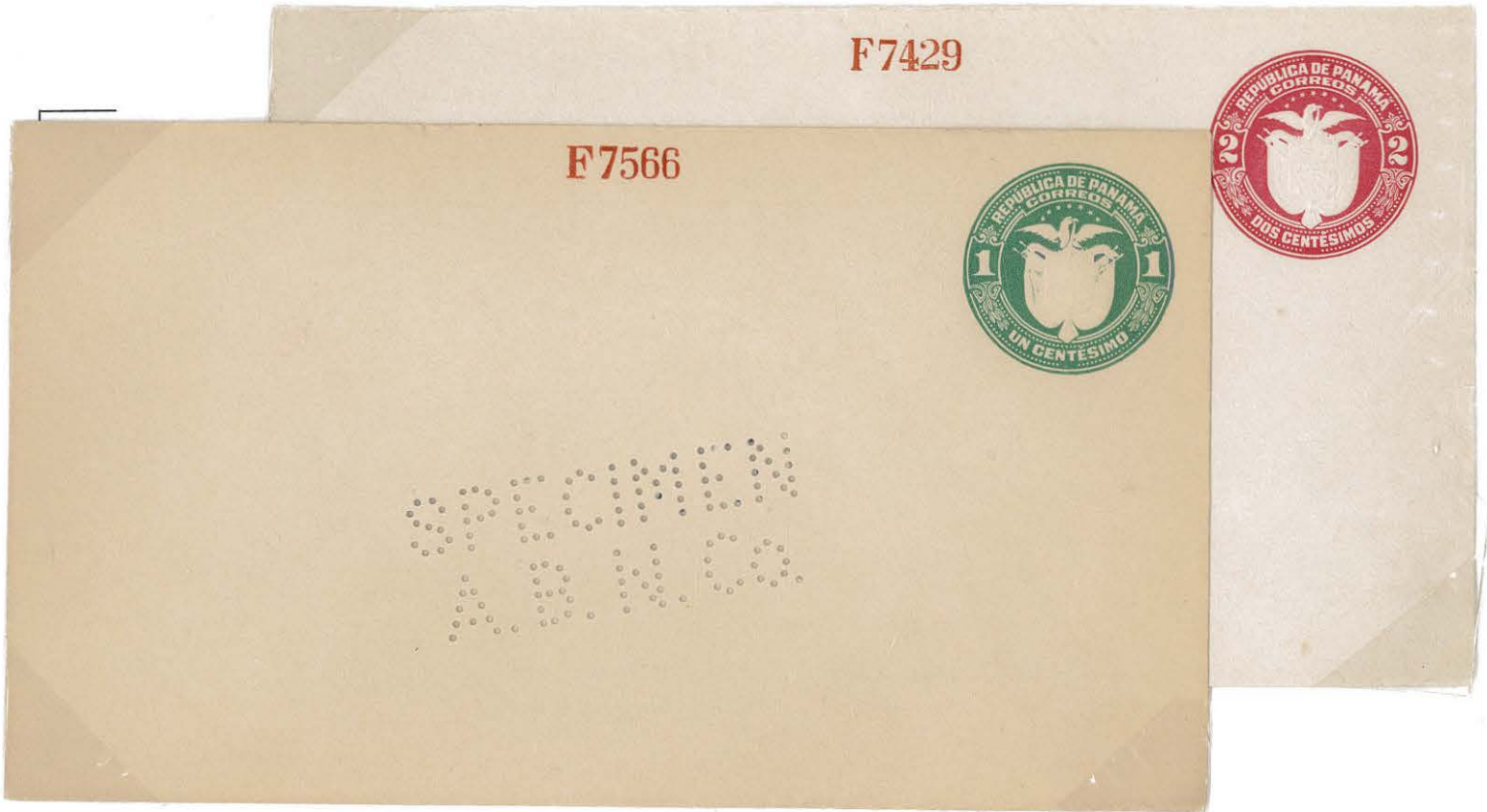
WR

**PRODUCTION FILE  
COAT OF ARMS**

**TYPOGRAPHED AND EMBOSSED BY THE AMERICAN BANK NOTE COMPANY  
LAST PANAMA PROOF**



**PANAMA SPECIMENS PRINT ORDERS F-7566 AND F-7429**

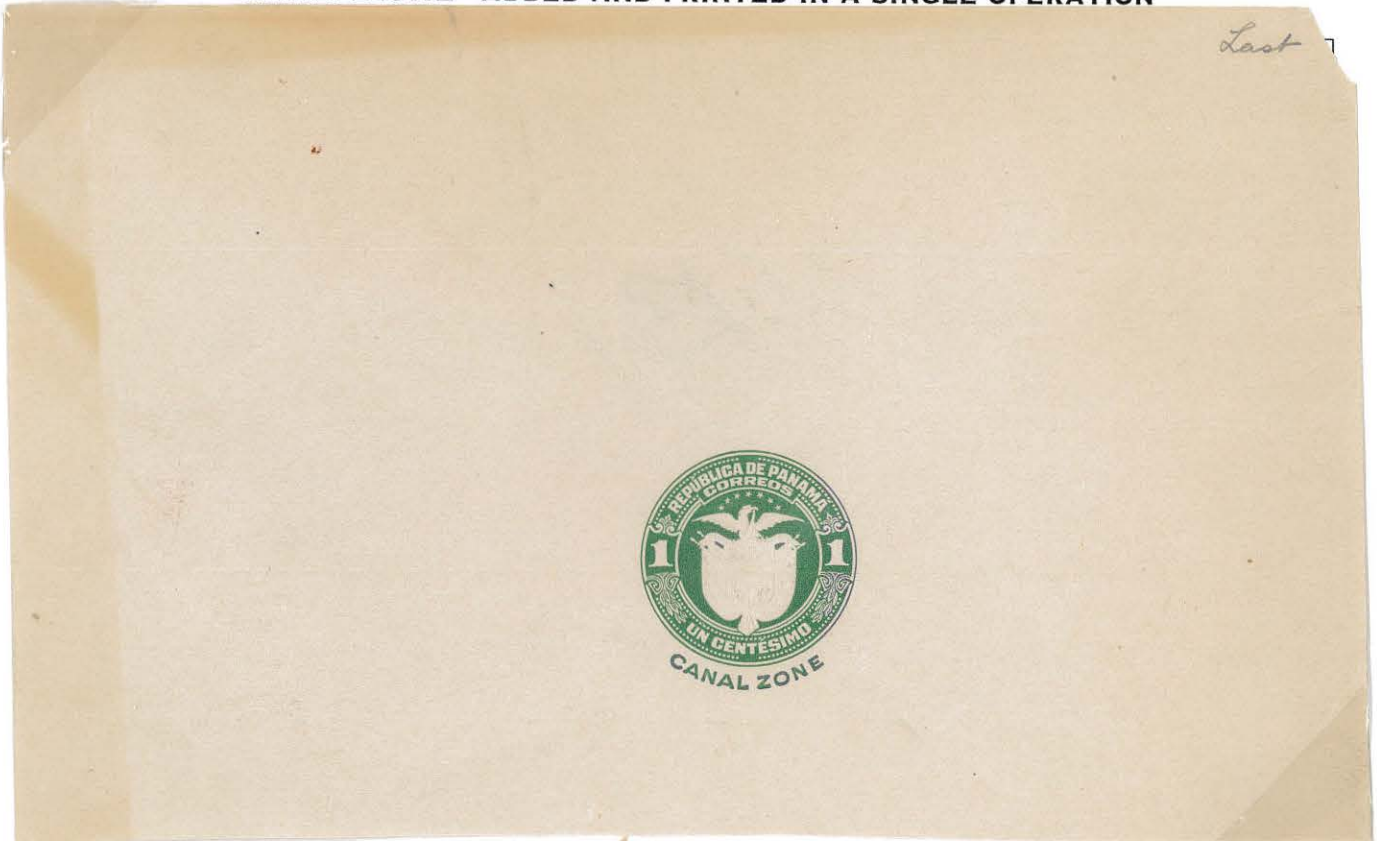


**PRODUCTION FILE**

**COAT OF ARMS**

In October 1923, the Canal Zone authorities approved the one-cent postal card and a one-cent envelope with the Republic of Panama design. The words "Canal Zone" were added below the die.

**EMBOSSSED LAST PROOF OF ONE-CENT POSTAL ENVELOPE AND CARD  
"CANAL ZONE" ADDED AND PRINTED IN A SINGLE OPERATION**



Newly discovered specimen of the one-cent envelope from the American Bank Note Company archives. Envelope is one of two known survivors since all were destroyed in 1937. Envelope is partially card-mounted.





**PRODUCTION FILE**

**COAT OF ARMS  
ONE-CENT ENVELOPE**

150,000 were ordered. 100,000 were delivered January 11, 1924, and 50,000 were delivered February 7, 1924. None were issued; all were burned in 1937. This specimen, from the American Bank Note Company archives, is one of only two survivors.

• **INDEX CARD, SAMPLE ENVELOPE AND SPECIMEN NUMBER F7429**

Panama, Republic of                      Stamped envelopes                      F 7429                      10/17/23                      1¢

Surface C 1488

*INDEX COPY*

F7429



ISSUED  
BY  
A.B.N.C.

Issued with embossing die "Canal Zone"  
Color-Green 1 •

**PRODUCTION FILE  
COAT OF ARMS  
ONE-CENT POSTAL CARD**

150,000 one-cent Canal Zone postal cards were ordered and delivered. On June 30, 1924, the postal card was removed from sale. In 1937 the balance unsold was incinerated. It is estimated that 60,000 were sold prior to withdrawal.

**INDEX CARD AND POSTAL CARD SPECIMEN NUMBER F7430**

Panama, Republic of

Postal Cards

F 7430

10/17/23

1¢

Surface C 1488



*Index*

UNION POSTALE UNIVERSELLE **F7430**

**REPÚBLICA DE PANAMÁ**

ESCRÍBASE EN ESTE LADO LA DIRECCIÓN SOLAMENTE

*A*

011

SPRINGFIELD  
MASS

Y Á LA VUELTA LA COMUNICACIÓN  
UNIÓN POSTAL UNIVERSAL

REPÚBLICA DE PANAMÁ  
CORREOS  
UN CENTESIMO  
CANAL ZONE

CARTE POSTALE  
Coté réservé à l'adresse

TARJETA POSTAL

Die engraved on F 7429.  
Embossing die prepared on F 7429. Issued with embossing die "Canal Zone".  
Text matter same as F 6783. Color-Green 1.

**PRODUCTION FILE**

**COAT OF ARMS**

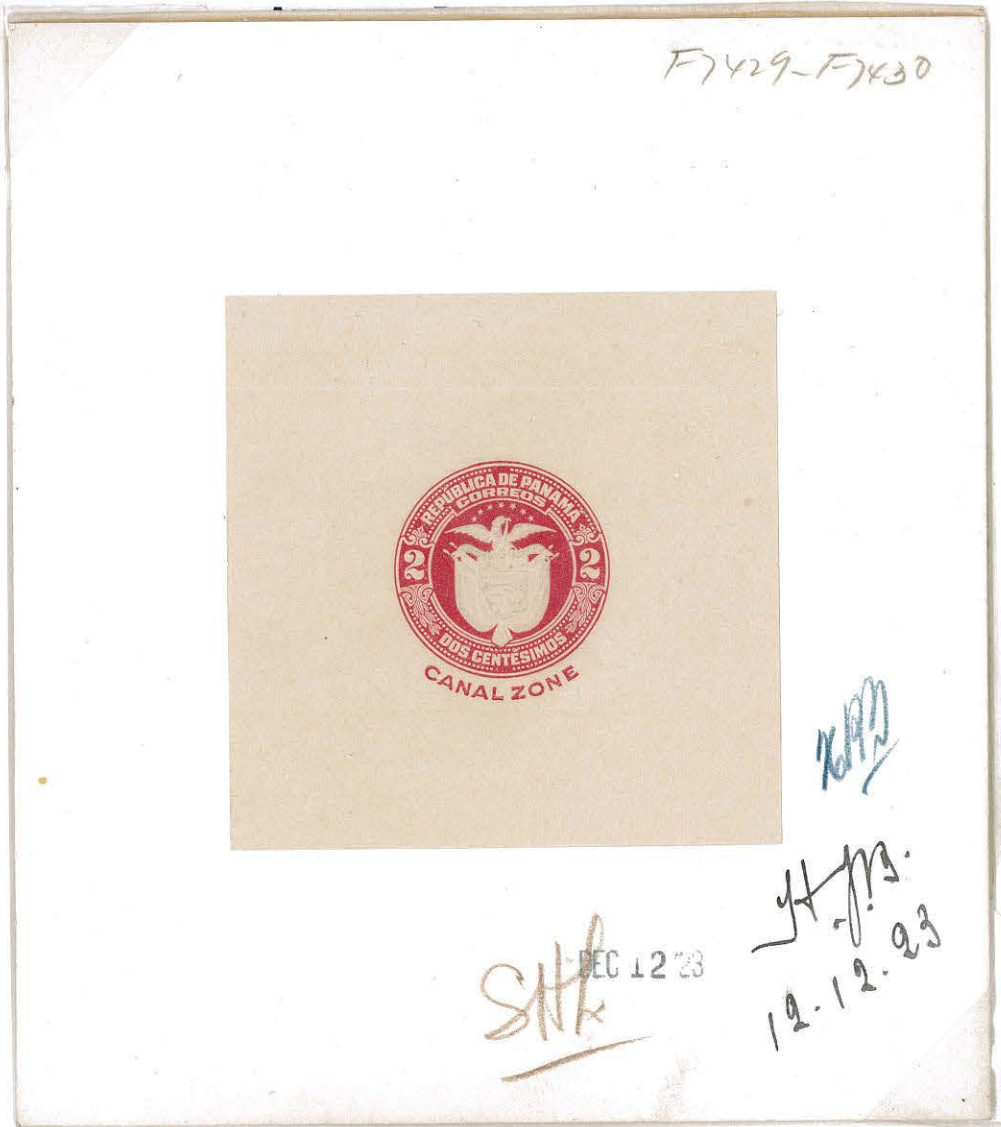
**FINAL APPROVED ONE-CENT DIE PROOF WITH PRINT NUMBERS F7429 AND F7430  
APPROVED DECEMBER 10, 1923**



PRODUCTION FILE

COAT OF ARMS

COMPLETED SIGNED-OFF PROOF OF THE TWO-CENT CANAL ZONE ENVELOPE



CANAL ZONE  
SPECIMEN  
FROM THE  
AMERICAN BANK  
NOTE ARCHIVES



**STAMPED ENVELOPES**

**THIRD ISSUE**

**DECEMBER 15, 1923**

250,000 were delivered but only 46,041 were issued. The balance was destroyed in 1937; two dies are known.

**DIE ONE**

**UNWATERMARKED    NO GUM ON FLAP**

**NO OVERPRINT  
ON FRONT**



**DIE TWO**

**DISTINGUISHABLE BY THE DROPPING FEATHER ON THE LEFT WING OF THE EAGLE**

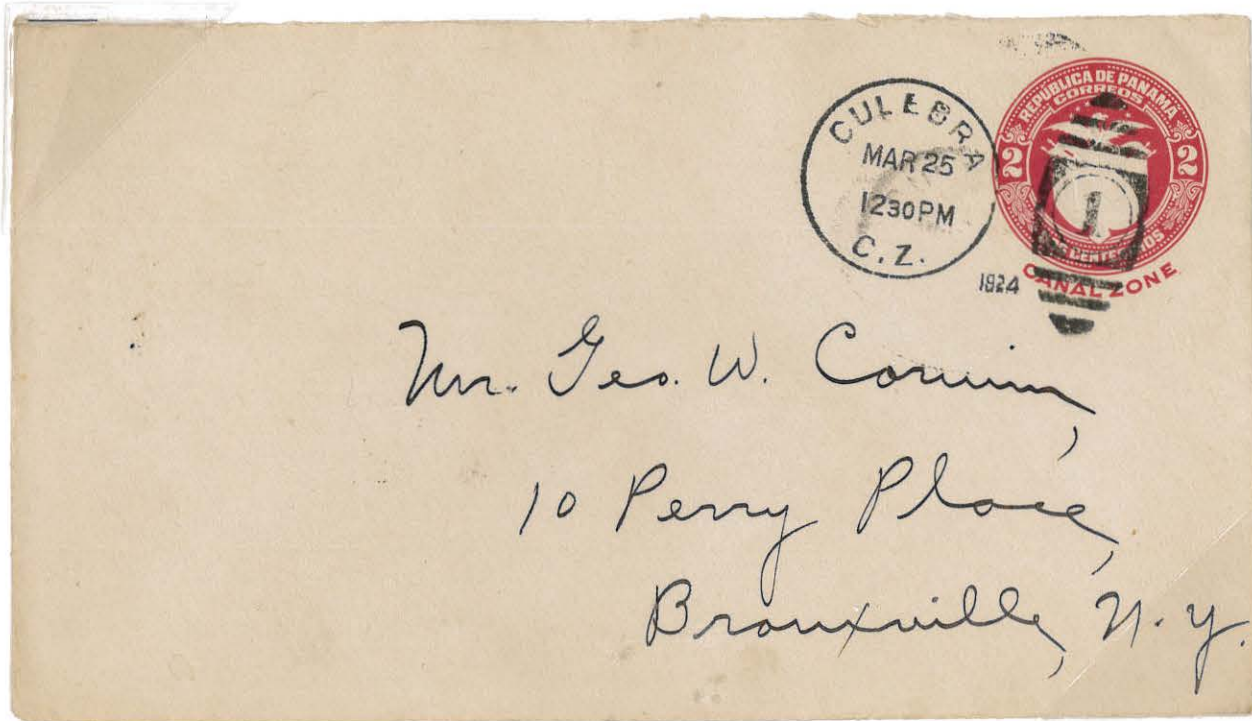


**STAMPED ENVELOPES**

**THIRD ISSUE**

**1924**

**EARLIEST REPORTED DATE: MARCH 25, 1924**



**MIXED FRANKING - NOVEMBER 7, 1925**

After August 31, 1924, postal stationery had an exemption for valid use. Overprinted Panama stamps were not valid after June 30, 1924. U.S. stamps overprinted "Canal Zone" had to be used after July 1, 1924.



**POSTAL CARDS**  
**FIFTH ISSUE**  
**ABROGATION OF THE TAFT AGREEMENT**

All Panama stamps and stationery overprinted with "Canal Zone" were withdrawn from sale June 30, 1924. They were no longer valid for postage after July 31, extended to August 31, 1924. Only exception to the August 31 ruling involved envelopes and postal cards which were valid indefinitely if the purchaser added a printed inscription.

**POSTMARKED: GATUN, C.Z. SEP. 8 1926**



**POSTMARKED: BALBOA, C.Z. JUN 12 1925**

Third class mail rate changed to one-and-one-half cents on April 15, 1925.





## CANAL ZONE 1918 REGISTRATION ENVELOPES

The 1904 Canal Treaty with Panama contained an agreement to supply stamps and postal stationery to the Zone. Known as the Taft Agreement, it provided that the Canal Zone Postal Service pay to Panama 40% of the face value of stamps and stationery; settlement was made quarterly to Panama as supplies were issued to Canal Zone postmasters. The U.S. government abrogated the treaty effective June 30, 1924 but said overprints on Panama stationery could be used until August 31, 1924. In August the use of overprinted stationery was extended indefinitely.

Panama registration envelopes were printed by the American Bank Note Company on heavy unwatermarked cream-colored paper lined with thread and without gum on the flap. Although registration envelopes were never issued in the continental U.S., the Canal Zone authorities decided to order a limited quantity from Panama in 1918.

Four separate press runs were required: one for horizontal black printing, one for vertical black printing including the stamp and the reverse side of the envelope, and two for the red letters and lines.

One unusual feature of the envelope is the rectangular space above the registration stamp with the Spanish for "Space for Ordinary Postage." The space is printed half on the envelope and half on the flap, so if the flap is opened after the stamp is affixed, the stamp will be torn.

The exhibit includes the Panama registration envelopes that were overprinted with "Canal Zone" as well as both printings of the Canal Zone registration envelopes. All known varieties and various usages are also part of the exhibit.

### PANAMA ISSUE OF 1918





BACK

Para retirar el contenido, córtese la cubierta  
sobre la línea roja.

AVISO.

En el Servicio Interior podrán enviarse en estos sobres oro o plata en bruto, objetos de oro, de plata, alhajas, piedras preciosas y otros objetos de valor.

Para el Exterior podrán enviarse los mismos artículos, siempre que en el país de destino no esté prohibido el envío de dichos artículos por medio de esta clase de correspondencia.

Los envíos para el Exterior deben ir acompañados de una declaración de aduana detallando el contenido y su valor.

Prohíbese terminantemente la inclusión de monedas.

El valor del contenido no debe exceder de B5.00 en el servicio Interior y de B10.00 en el Internacional.

\_\_\_\_\_  
Dirección del remitente

Nombre del remitente.....

Domicilio.....

\_\_\_\_\_  
Nota para la Oficina Destinataria

Si esta carta no fuere entregada después de  
..... días devuélvase a la anterior dirección.

DESTINATION: U.S.



SERVICIOS DE RECOMENDADOS Y DE  
"CARTA-PAQUETE"

Esta carta debe entregarse a un empleado de la Oficina de Correos para ser Recomendada y obtener el recibo correspondiente.

01655

DIRECCION:

J. H. Lemmit

409 E Hazelton Ave

50162

Stockton, Calif  
U. S. A.



Para retirar el contenido córtese la cubierta  
sobre la línea roja.



REGISTRATION ENVELOPES

PANAMA ISSUE OF 1918

SIZE EIGHT

FRONT

BACK

Para retirar el contenido córtese la cubierta sobre la línea roja.

Para retirar el contenido, córtese la cubierta sobre la línea roja.

Espacio para  
franqueo  
ordinario.



SERVICIOS DE RECOMENDADOS Y DE  
"CARTA-PAQUETE"

Esta carta debe entregarse a un empleado de la Oficina de Correos para ser Recomendada y obtener el recibo correspondiente.

DIRECCION:

AVISO.

En el Servicio Interior podrán enviarse en estos sobres oro o plata en bruto, objetos de oro, de plata, alhajas, piedras preciosas y otros objetos de valor.

Para el Exterior podrán enviarse los mismos artículos, siempre que en el país de destino no esté prohibido el envío de dichos artículos por medio de esta clase de correspondencia.

Los envíos para el Exterior deben ir acompañados de una declaración de aduana detallando el contenido y su valor.

Prohíbese terminantemente la inclusión de monedas.

El valor del contenido no debe exceder de B5.00 en el servicio Interior y de B10.00 en el Internacional.

Dirección del remitente

Nombre del remitente

Domicilio PAT & CO. SUCS TO  
PO YUEN & CO.  
P. O. BOX 244  
PANAMA, P. R.

Nota para la Oficina Destinataria

Si esta carta no fuere entregada después de días devuélvase a la anterior dirección.



8



**SERVICIOS DE RECOMENDADOS Y DE  
"CARTA-PAQUETE"**

Esta carta debe entregarse a un empleado de la Oficina de Correos para ser Recomendada y obtener el recibo correspondiente.

DIRECCION:

*Montgomery Ward & Co  
Chicago,*

*2 Ill.  
93896 U. S. A.*



Para retirar el contenido córtese la cubierta sobre la línea roja.

U. S. DESTINATION

REGISTRATION ENVELOPES

PANAMA ISSUE OF 1918

SIZE EIGHT



**SERVICIOS DE RECOMENDADOS Y DE  
"CARTA-PAQUETE"**

Esta carta debe entregarse a un empleado de la Oficina de Correos para ser Recomendada y obtener el recibo correspondiente.

DIRECCION:

*W. Riha  
Briefmarken-Export  
Wien, XX.,  
Wallensteinstrasse 65*



Para retirar el contenido córtese la cubierta sobre la línea roja.

FOREIGN DESTINATION

**REGISTRATION ENVELOPES**  
**FIRST PRINTING - SIZE SIX**

Canal Zone authorities, believing that the registered envelopes would cut down on tampering and theft, ordered a supply of Panama envelopes overprinted "Canal Zone". 9000 of the small and 1000 of the large envelopes were delivered in August 1918 to the Panama Canal Press at Mount Hope where they were surcharged. In the upper left quadrant, "Registered No. \_\_\_\_\_" was added. "10 cts." and "Canal Zone" were added on the stamp.

FRONT

REGISTRED

**SERVICIOS DE RECOMENDADOS Y DE "CARTA-PAQUETE"**

Esta carta debe entregarse a un empleado de la Oficina de Correos para ser Recomendada y obtener el recibo correspondiente.

DIRECCION No. \_\_\_\_\_

REGISTRED

Para retirar el contenido córtese la cubierta sobre la línea roja.

RECOMENDADO  
REPUBLICA DE PANAMA  
10 cts.  
CINCO CENÉTIMOS

Espacio para franqueo ordinario.

BACK

982

Para retirar el contenido, córtese la cubierta sobre la línea roja.

**AVISO.**

En el Servicio Interior podrán enviarse en estos sobres oro o plata en bruto, objetos de oro, de plata, alhajas, piedras preciosas y otros objetos de valor.

Para el Exterior podrán enviarse los mismos artículos, siempre que en el país de destino no esté prohibido el envío de dichos artículos por medio de esta clase de correspondencia.

Los envíos para el Exterior deben ir acompañados de una declaración de aduana detallando el contenido y su valor.

Prohíbese terminantemente la inclusión de monedas.

El valor del contenido no debe exceder de B5.00 en el servicio Interior y de B10.00 en el Internacional.

Dirección del remitente

Nombre del remitente *C. Pérez H.*

Domicilio *Consulado de Cuba, Colón, R. de P.*

**Nota para la Oficina Destinataria**

Si esta carta no fuere entregada después de \_\_\_\_\_ días devuélvase a la anterior dirección.

REGISTRATION ENVELOPES

FIRST PRINTING - SIZE SIX

- BLACK PORTION OF THE FACE OF ENVELOPE DOUBLE



- "0 CTS" FOR "10 CTS" CAUSED BY PAPER FOLD  
"1" IS BELOW FLAP



REGISTRATION ENVELOPES

FIRST PRINTING - SIZE SIX

EARLIEST REPORTED DATE: OCTOBER 25, 1918

WITH TWO-CENT ISSUE OF 1912-16 -- INVERTED CENTER



DESTINATION: EUROPE

RATE: TEN-CENT REGISTRY FEE PLUS FIVE-CENT SURFACE RATE



REGISTRATION ENVELOPES

FIRST PRINTING - SIZE EIGHT

OCTOBER 1918 1,000 ISSUED

Para retirar el contenido córtese la cubierta sobre la línea roja.

Espacio para franqueo ordinario.



Para retirar el contenido, córtese la cubierta sobre la línea roja.

AVISO.

En el Servicio Interior podrán enviarse en estos sobres oro o plata en bruto, objetos de oro, de plata, alhajas, piedras preciosas y otros objetos de valor.

Para el Exterior podrán enviarse los mismos artículos, siempre que en el país de destino no esté prohibido el envío de dichos artículos por medio de esta clase de correspondencia.

Los envíos para el Exterior deben ir acompañados de una declaración de aduana detallando el contenido y su valor.

Prohíbese terminantemente la inclusión de monedas.

El valor del contenido no debe exceder de B5.00 en el servicio Interior y de B10.00 en el Internacional.

Dirección del remitente

Nombre del remitente.....

Domicilio.....

Nota para la Oficina Destinataria

Si esta carta no fuere entregada después de ..... días devuélvase a la anterior dirección.

SERVICIOS DE RECOMENDADOS Y DE "CARTA-PAQUETE"

Esta carta debe entregarse a un empleado de la Oficina de Correos para ser Recomendada y obtener el recibo correspondiente.

DIRECCION:

REGISTERED

No. \_\_\_\_\_





SERVICIOS DE RECOMENDADOS Y DE "CARTA-PAQUETE"

Esta carta debe entregarse a un empleado de la Oficina de Correos para ser Recomendada y obtener el recibo correspondiente.

REGISTERED

No. 555851

DIRECCION:

M. H. Lloyd  
88 N. Niagara St.  
Tonawanda  
N.Y.



Espacio para franqueo ordinario.



Para retirar el contenido córtese la cubierta sobre la línea roja.

DESTINATION: U.S.

TEN-CENT REGISTRY FEE PLUS TWO-CENT SURFACE RATE

REGISTRATION ENVELOPES  
FIRST PRINTING - SIZE EIGHT

COVER IS OVERFRANKED



SERVICIOS DE RECOMENDADOS Y DE "CARTA-PAQUETE"

Esta carta debe entregarse a un empleado de la Oficina de Correos para ser Recomendada y obtener el recibo correspondiente.

REGISTERED

No. 26182

DIRECCION:

H. F. Colman  
Second National Bank Bldg  
509-Seventh St. N.W.  
Washington, D.C.

42053

42053



Espacio para franqueo ordinario.



Para retirar el contenido córtese la cubierta sobre la línea roja.



42053  
378153



# REGISTRATION ENVELOPES

SECOND PRINTING - SIZE SIX

A second printing was ordered from Panama; 16,000 small and 9,000 large envelopes were delivered. The Panama Canal Press at Mount Hope did the surcharging and made some changes. The letter "R" in "Registered" was changed to a different font. The first printing had many broken letters; these were corrected. Space between "Canal" and "Zone" was widened from 8.0 mm to 9.3 mm. The printing on the back of the envelope was not changed.

FRONT



**SERVICIOS DE RECOMENDADOS Y DE "CARTA-PAQUETE"**

Esta carta debe entregarse a un empleado de la Oficina de Correos para ser Recomendada y obtener el recibo correspondiente.

**REGISTERED**

DIRECCION: No. \_\_\_\_\_


\_\_\_\_\_

\_\_\_\_\_

\_\_\_\_\_

**Espacio para franqueo ordinario.**

Para retirar el contenido córtese la cubierta sobre la línea roja.



BACK

Para retirar el contenido, córtese la cubierta sobre la línea roja.

**AVISO.**

En el Servicio Interior podrán enviarse en estos sobres oro o plata en bruto, objetos de oro, de plata, alhajas, piedras preciosas y otros objetos de valor.

Para el Exterior podrán enviarse los mismos artículos, siempre que en el país de destino no esté prohibido el envío de dichos artículos por medio de esta clase de correspondencia.

Los envíos para el Exterior deben ir acompañados de una declaración de aduana detallando el contenido y su valor.

Prohíbese terminantemente la inclusión de monedas.

El valor del contenido no debe exceder de B5.00 en el servicio Interior y de B10.00 en el Internacional.

Dirección del remitente \_\_\_\_\_

Nombre del remitente Dr. J. J. J.

Domicilio Caracas, V. G.

**Nota para la Oficina Destinataria**

Si esta carta no fuere entregada después de \_\_\_\_\_ días devuélvase a la anterior dirección.

REGISTRATION ENVELOPES

SECOND PRINTING - SIZE SIX

DESTINATION: CANAL ZONE

TEN-CENT REGISTRY FEE PLUS TWO-CENT DOMESTIC LETTER RATE



SERVICIOS DE RECOMENDADOS Y DE "CARTA-PAQUETE"

Esta carta debe entregarse a un empleado de la Oficina de Correos para ser Recomendada y obtener el recibo correspondiente.

REGISTERED

DIRECCION:

No. 320

*Joseph Covelleski*

*Ancon  
Canal Zone*



Para retirar el contenido córtese la cubierta sobre la línea roja.

DESTINATION: U.S.

TEN-CENT REGISTRY FEE PLUS TWO-CENT SURFACE RATE



SERVICIOS DE RECOMENDADOS Y DE "CARTA-PAQUETE"

Esta carta debe entregarse a un empleado de la Oficina de Correos para ser Recomendada y obtener el recibo correspondiente.

REGISTERED

DIRECCION:

No. 68

*Theo. Candelero  
72 Fifth Ave. (in 1346 St.)  
New York  
New York*



Para retirar el contenido córtese la cubierta sobre la línea roja.



**SERVICIOS DE RECOMENDADOS Y DE  
"CARTA-PAQUETE"**

Esta carta debe entregarse a un empleado de la Oficina de Correos para ser Recomendada y obtener el recibo correspondiente.

REGISTERED

No. \_\_\_\_\_

**DIRECCION:**

\_\_\_\_\_

-----

-----

-----

Espacio para  
franqueo  
ordinario.



Para retirar el contenido córtese la cubierta sobre la línea roja.

9,000 ISSUED

**REGISTRATION ENVELOPES**  
SECOND PRINTING - SIZE EIGHT



SERVICIOS DE RECOMENDADOS Y DE "CARTA-PAQUETE"

Esta carta debe entregarse a un empleado de la Oficina de Correos para ser Recomendada y obtener el recibo correspondiente.

REGISTERED

No. 8293

DIRECCION:

*J. Lovelock*

*Armen leg.*



Para retirar el contenido c6rtese la cubierta sobre la linea roja.

DESTINATION: CANAL ZONE  
TEN-CENT REGISTRY FEE  
PLUS TWO-CENT DOMESTIC RATE

REGISTRATION ENVELOPES  
SECOND PRINTING - SIZE EIGHT



SERVICIOS DE RECOMENDADOS Y DE "CARTA-PAQUETE"

Esta carta debe entregarse a un empleado de la Oficina de Correos para ser Recomendada y obtener el recibo correspondiente.

REGISTERED

No. 5152

DIRECCION:

*Chisholm + Chapman*  
*#71 Broadway*

*New York*  
*N.Y.*



Para retirar el contenido c6rtese la cubierta sobre la linea roja.

DESTINATION: U.S.  
TEN-CENT REGISTRY FEE  
PLUS FOUR-CENT SURFACE RATE (TWO OUNCES)

REJECTED REGISTRATION ENVELOPES

SIZE SIX

A third order was placed for 25,000 small and 10,000 large envelopes in November 1919. The American Bank Note Company was requested to supply envelopes with the "Canal Zone" and "10¢" surcharge. They were received in December 1920. By this time, the Canal Zone postal authorities had concluded that these so-called inviolable registered envelopes had not reduced loss or pilferage. The entire shipment was offered to Panama in April 1921. The issue was overprinted with solid black blocks to obliterate the "10 cts" and "Canal Zone." The denomination was changed to "centavos" for use in Panama. Printing on the back of the third printing was the same as the first printing.

FRONT



BACK



REJECTED REGISTRATION ENVELOPES

PANAMA SIZE SIX

DESTINATION: BIRMINGHAM, ENGLAND



DESTINATION: SWEDEN



REJECTED REGISTRATION ENVELOPES  
SIZE EIGHT - 10,000 ISSUED AND SURCHARGED

Para retirar el contenido córtese la cubierta  
sobre la línea roja.

Espacio para  
franqueo  
ordinario.



SERVICIOS DE RECOMENDADOS Y DE  
"CARTA-PAQUETE"

Esta carta debe entregarse a un empleado de la Oficina  
de Correos para ser Recomendada y obtener el recibo  
correspondiente.



DIRECCION:

.....

.....

.....

.....



SERVICIOS DE RECOMENDADOS Y DE "CARTA-PAQUETE"

Esta carta debe entregarse a un empleado de la Oficina de Correos para ser Recomendada y obtener el recibo correspondiente.

DIRECCION:

*S. M. Delite Co  
530 Broadway  
New York  
U.S.A*



Para retirar el contenido cortese la cubierta sobre la linea roja.



SERVICIOS DE RECOMENDADOS Y DE "CARTA-PAQUETE"

Esta carta debe entregarse a un empleado de la Oficina de Correos para ser Recomendada y obtener el recibo correspondiente.

DIRECCION:

*Montgomery Ward Co.,  
Chicago, Ill  
USA*



Para retirar el contenido cortese la cubierta sobre la linea roja.

11691

PASSED BY U.S. POST OFFICE  
BUREAU, CHICAGO, ILL.  
R.M.L.

REJECTED REGISTRATION ENVELOPES  
SIZE EIGHT - 10,000 ISSUED AND SURCHARGED

DESTINATION: U.S.



**REJECTED REGISTRATION ENVELOPES**

• "CANAL ZONE" NOT BLOCKED OUT

Considered "Canal Zone" Essays. Although never issued, two unused and one used are known.

Para retirar el contenido córtese la cubierta sobre la línea roja.

Espacio para  
franqueo  
ordinario.



DIRECCION:



**SERVICIOS DE RECOMENDADOS Y DE "CARTA-PAQUETE"**

Esta carta debe entregarse a un empleado de la Oficina de Correos para ser Recomendada y obtener el recibo correspondiente.

Para retirar el contenido córtese la cubierta sobre la línea roja.



DIRECCION:

Mr J. P. Coveleski.

Ancon,

Canal Zone.

5706



**SERVICIOS DE RECOMENDADOS Y DE "CARTA-PAQUETE"**

Esta carta debe entregarse a un empleado de la Oficina de Correos para ser Recomendada y obtener el recibo correspondiente.