

SIEGEL AUCTION GALLERIES

CENSUS OF 5-CENT AMERICAN BANK NOTE CO. SPECIAL PRINTING (SCOTT 204)

SPECIAL NOTE: There are many United States stamps that look similar to the rarities listed below. Some of the differences between expensive rarities and common stamps can be subtle, including differences in perforation, shade and size. These stamps should have certificates from a recognized expertizing committee, such as The Philatelic Foundation or P.S.E. If you think you have one of these rarities, we cannot help you until after it has such a certificate.



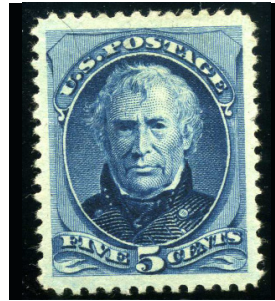
204-UNC-01
Col. Green Coll.
Engel - Corinphila 5/30/1975
Walter Klein Coll. - Christie's
6/15/1988, Lot 139
Zoellner Coll. - RAS Sale 804
10/9/1998, Lot 401 - \$45,000
PFC 8372 "Genuine"
PFC 328996 "Genuine"



204-UNC-02
RAS 3/31/1976
PFC 40447 "Genuine reperfed
at right"



204-UNC-03
Caspary - HRH 11/21/1956
Ambassador Coll. - RAS
4/27/1966, Lot 244
Cole - RAS 2/24/1988 - \$42,500
Weisman, SPG 5/8/1998, - \$52,500
SPG 10/18/2002, Lot 237 - \$80,000
Hansen Coll., RAS S963,
10/28/2008, lot 828
PFC 7374 "Genuine"
PFC 192331 "Genuine"
PFC 468404 "Genuine"



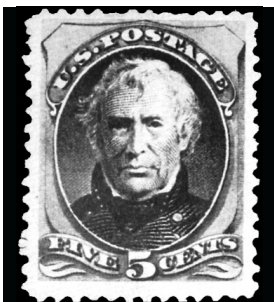
204-UNC-04
Hetherington Coll.
Lilly - RAS 2/2/1967 - \$6,750
Mielstrup Coll. - Mozian
5/2/1973, Lot 346
Newport Coll., PRW 5/2008
PFC 1352 "Genuine"
PFC 460777 "Genuine, tiny
margin nick at right in the 6th
perf hole down from the top"



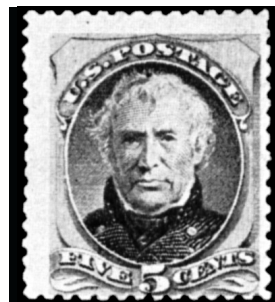
204-UNC-05
HRH 11/9/1953
Floyd Coll., SPG 10/23/2005 -
\$140,000
PFC 4578 "Genuine"
PFC 266267 "Genuine"



204-UNC-06
PFC 781 "Genuine"



204-UNC-07
Isabelle Lessmann Coll. - RAS
9/12/1984, Lot 200
Hewitt Coll. - Ivy 5/26/1986
PFC 6108 "Genuine"
PFC 139667 "Genuine"



204-UNC-08
Fifield 5/31/1961
PFC 1212 "Genuine"



204-UNC-09
RAS 2/23/1967
PFC 24075 "Genuine, thin near
top"



204-UNC-10
HRH 4/1/1956 "tiny thins"
PFC 1022 "Genuine"

SIEGEL AUCTION GALLERIES

CENSUS OF 5-CENT AMERICAN BANK NOTE CO. SPECIAL PRINTING (SCOTT 204)

SPECIAL NOTE: There are many United States stamps that look similar to the rarities listed below. Some of the differences between expensive rarities and common stamps can be subtle, including differences in perforation, shade and size. These stamps should have certificates from a recognized expertizing committee, such as The Philatelic Foundation or P.S.E. If you think you have one of these rarities, we cannot help you until after it has such a certificate.



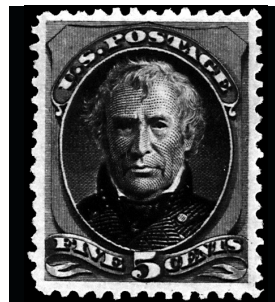
204-UNC-11
RAS 3/23/1977
PFC 31481 "Genuine, small thinning at top"



204-UNC-12
West Coll. - Ward 4/26/1947
Concord Coll. - RAS 5/19/1994,
Lot 205 - \$32,000
PFC 282646 "Genuine"
Illustrated in Brookman



204-UNC-13
PFC 745 "Genuine"
PFC 29449 "Genuine, toned paper"
PFC 214613 "Genuine"



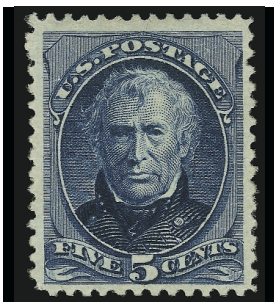
204-UNC-14
Lessin, SPG 5/31/2002 - \$150,000
PFC 119635 "Genuine"
PFC 218667 "Genuine"



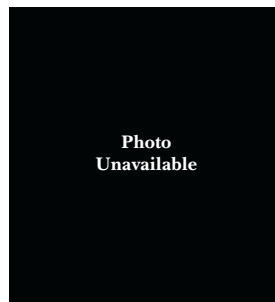
204-UNC-15
PFC 479 "Genuine"
PFC 253139 "Genuine"



204-UNC-16
PFC 2188 "Genuine"



204-UNC-17
Lyons, SPG 1/21/2000 - \$87,500
RAS 2007 Rarities - \$300,000
PFC 282301 "Genuine"



204-UNC-18
Miller Coll., NYPL