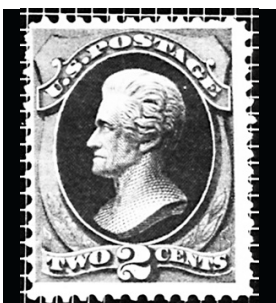
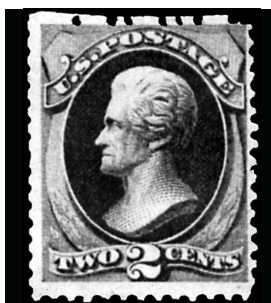


SIEGEL AUCTION GALLERIES
CENSUS OF 2-CENT CONTINENTAL SPECIAL PRINTING (SCOTT 180)

SPECIAL NOTE: There are many United States stamps that look similar to the rarities listed below. Some of the differences between expensive rarities and common stamps can be subtle, including differences in perforation, shade and size. These stamps should have certificates from a recognized expertizing committee, such as The Philatelic Foundation or P.S.E. If you think you have one of these rarities, we cannot help you until after it has such a certificate.



180-UNC-01
RAS 3/27/1974
Lyons Coll. - SPG 1/21/2000,
Lot 200 - \$22,000
McCarthy Coll., SPG
12/12/2003, Lot 159 - \$21,000
PFC 44870 "Genuine"
PFC 366108 "Genuine"



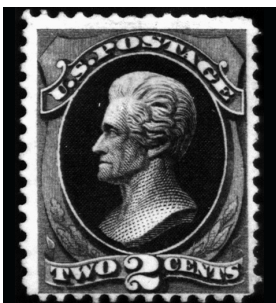
180-UNC-02
Ambassador Coll. - RAS
4/27/1966, Lot 223 "tiny
corner thin"
Mielstrup Coll. - RAS 5/2/1973,
Lot 228 "sm. corner thin"
PFC 8992 "Genuine"



180-UNC-03
Lutwak Coll.
Zoellner Coll. - RAS Sale 804
10/9/1998, Lot 378 - \$10,000
RAS Sale 818, 12/13/1999, Lot
757-\$12,000 "tiny pinhole"
PFC 68849 "Genuine"
PFC 26422 "Genuine with a
pinhole on chin"



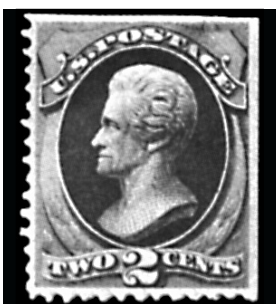
180-UNC-04
Sotheby's 10/9/1979
Hoffman, RAS Sale 956 - \$95,000
PFC 1404 "Genuine"
PFC 20955 "Genuine"



180-UNC-05
Hale Coll. - Sanabria 3/8/1939
Weisman Coll. - SPG 5/8/1998,
Lot 1133 - \$21,000
Floyd Coll. - SPG 10/23/2001,
Lot 318 - \$17,500
PFC 4278 "Genuine"
PFC 214601 "Genuine"
PFC 328133 "Genuine"



180-UNC-06
HRH 2/2/1953
Lessin Coll. - SPG 5/31/2002,
Lot 320 - \$24,000
Hansen Coll., RAS S963,
10/28/2008, lot 791
PFC 3937 "Genuine"
PFC 29436 "Genuine"
PFC 238384 "Genuine"
PFC 468471 "Genuine"



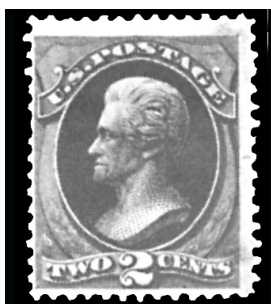
180-UNC-07
Fox 10/26/1956 "Pin hole thin"
RAS 3/23/1973 s.e. T., R.
PFC 3614 "Genuine"



180-UNC-08
Engel Coll. - Corinphila 5/30/1975
PFC 10853 "Genuine"
PFC 50293 "Genuine with some
thinning"



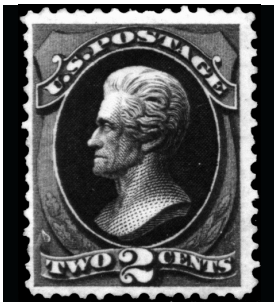
180-UNC-09
Caspary - HRH 11/21/1956
Golin Coll. - RAS Sale 812
6/25/1999, Lot 191 - \$20,000
PFC 7375 "Genuine"
PFC 257326 "Genuine"



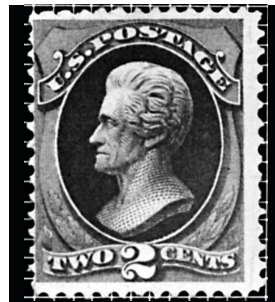
180-UNC-10
Caspary - HRH 11/21/1956
PFC 82000 "Genuine with
slight staining and some black
soiling"

SIEGEL AUCTION GALLERIES
CENSUS OF 2-CENT CONTINENTAL SPECIAL PRINTING (SCOTT 180)

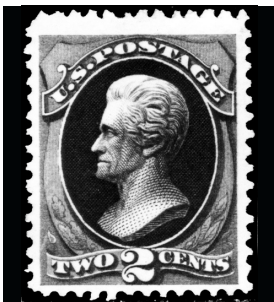
SPECIAL NOTE: There are many United States stamps that look similar to the rarities listed below. Some of the differences between expensive rarities and common stamps can be subtle, including differences in perforation, shade and size. These stamps should have certificates from a recognized expertizing committee, such as The Philatelic Foundation or P.S.E. If you think you have one of these rarities, we cannot help you until after it has such a certificate.



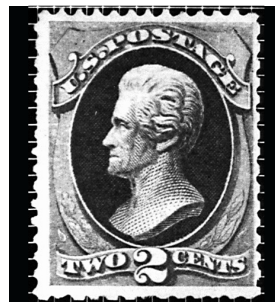
180-UNC-11
RAS 1982 Rarities - \$12,000
RAS 11/18/1989, Lot 309 "few short or nibbed perfs"
PFC 98424 "Genuine"
PFC 247316 "Genuine with light perf staining at T.R."



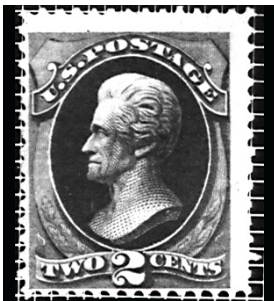
180-UNC-12
PFC 364 "Genuine"



180-UNC-13
Lilly Coll. - RAS 2/2/1967, Lot 290 - \$6,000
Cole Coll. - RAS 2/24/1988, Lot 1207 - \$25,000
SPG 10/18/2002, Lot 218 - \$32,500
PFC 1527 "Genuine"
PFC 192324 "Genuine"



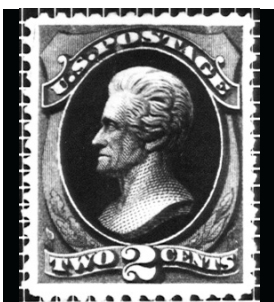
180-UNC-14
PFC 8110 "Genuine"



180-UNC-15
PFC 24786 "Genuine"



180-UNC-16
RAS 1/25/1983, Lot 818
"negligible corner perf crease"
"Bayou" Coll. - RAS Sale 843, 2/27/2002, Lot 1328 - \$32,500
Initialled by Spencer Anderson
PFC 48852 "Genuine"



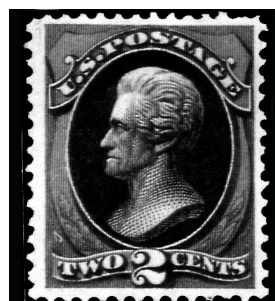
180-UNC-17
PFC 116549 "Genuine"



180-UNC-18
Hewitt Coll. - Ivy 5/26/1986
Concord Coll. - RAS 5/19/1994, Lot 183 - \$32,500
PFC 120073 "Genuine"
PFC 313439 "Genuine"



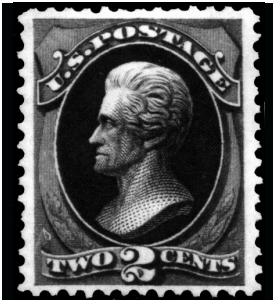
180-UNC-19
PFC 192266 "Genuine"



180-UNC-20
Hinrichs Coll. - SPG 5/21/2004, Lot 337 - \$43,250
PFC 273676 "Genuine"

SIEGEL AUCTION GALLERIES
 CENSUS OF 2-CENT CONTINENTAL SPECIAL PRINTING (SCOTT 180)

SPECIAL NOTE: There are many United States stamps that look similar to the rarities listed below. Some of the differences between expensive rarities and common stamps can be subtle, including differences in perforation, shade and size. These stamps should have certificates from a recognized expertizing committee, such as The Philatelic Foundation or P.S.E. If you think you have one of these rarities, we cannot help you until after it has such a certificate.

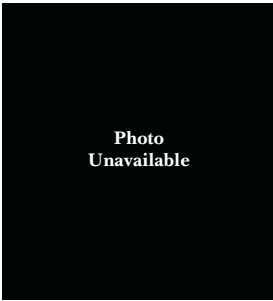


180-UNC-21
 PFC 270404 "Genuine"



180-UNC-22
 Gerber Aug. 1981
 Signed W.H. Colson
 Never certified by P.F.

**Possibly same stamp as
 180-UNC-23**



180-UNC-23
 Miller Coll., NYPL

**Possibly same stamp
 as 180-UNC-22**



180-UNC-24
 RAS 2002 Rarities - \$50,000
 Initialed Spencer Anderson
 PFC 378064 "Genuine"